

# IHC*easy* TXNDC12 Ready-To-Use IHC Kit

Catalog Number: **KHC0855**

## General Information

Sample type:  
FFPE tissue  
Cited sample type:  
Reactivity:  
Human  
Cited Reactivity:

Assay type:  
Immunohistochemistry  
Primary antibody type:  
Rabbit Polyclonal  
Secondary antibody type:  
Polymer-HRP-Goat anti-Rabbit

## Kit Component

Component	Size	Concentration
Antigen Retrieval Buffer	100 mL	50×
Washing Buffer	100 mL ×2	20×
Blocking Buffer	5 mL	RTU
Primary Antibody	5 mL	RTU
Secondary Antibody	5 mL	RTU
Chromogen Component A	0.2 mL	RTU
Chromogen Component B	4 mL	RTU
Signal Enhancer	5 mL	RTU
Counter Staining Reagent	5 mL	RTU
Mounting Media	5 mL	RTU
Control Slide	1 slide (Optional)	FFPE
Datasheet	1 Copy	
Manual	1 Copy	

## Storage Instructions

All the reagents are stored at 2-8°C. The kit is stable for 6 months from the date of receipt.

## Background

TXNDC12, which is known as thioredoxin domain-containing protein 12, ERp16, ERp18, ERp19, or hTLP19, is a member of the protein disulfide isomerase (PDI) family that plays important roles in cancer development and progression. TXNDC12 has been demonstrated to contribute to tumorigenicity in human gastric cancer by promoting cell growth, migration and invasion. Other study also revealed the overexpression of TXNDC12 promotes HCC metastasis through  $\beta$ -catenin-mediated induction of EMT and that TXNDC12 has the potential to be a prognostic factor and therapeutic target of HCC.

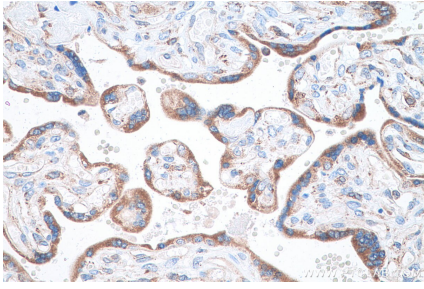
## Synonyms

AGR1, AIF, AIFM1, ERp18, ERp19, hAG 1, PDIC8, PDIA16, TLP19, TXNDC12

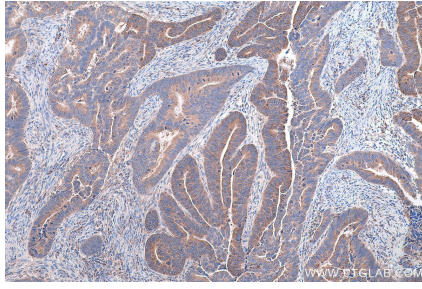
For technical support and original validation data for this product please contact:  
T: 1 (888) 4PTGLAB (1-888-478-4522) (toll free in USA), or 1(312) 455-8498 (outside USA)  
E: [proteintech@ptglab.com](mailto:proteintech@ptglab.com)  
W: [ptglab.com](http://ptglab.com)

This product is exclusively available under Proteintech Group brand and is not available to purchase from any other manufacturer.

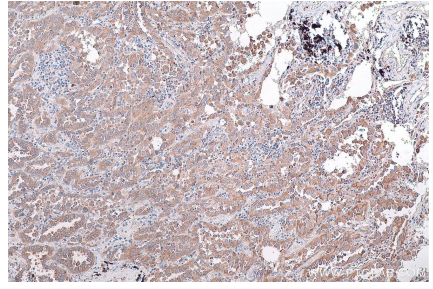
## Selected Validation Data



Immunohistochemical analysis of paraffin-embedded human placenta tissue slide using KHC0855 (TXNDC12 IHC Kit).



Immunohistochemical analysis of paraffin-embedded human colon cancer tissue slide using KHC0855 (TXNDC12 IHC Kit).



Immunohistochemical analysis of paraffin-embedded human lung cancer tissue slide using KHC0855 (TXNDC12 IHC Kit).