

IHC*easy* GALK1 Ready-To-Use IHC Kit

Catalog Number: **KHC0896**

General Information

Sample type:
FFPE tissue

Cited sample type:

Reactivity:
Human, Mouse, Rat

Cited Reactivity:

Assay type:
Immunohistochemistry

Primary antibody type:
Rabbit Polyclonal

Secondary antibody type:
Polymer-HRP-Goat anti-Rabbit

Kit Component

Component	Size	Concentration
Antigen Retrieval Buffer	100 mL	50×
Washing Buffer	100 mL ×2	20×
Blocking Buffer	5 mL	RTU
Primary Antibody	5 mL	RTU
Secondary Antibody	5 mL	RTU
Chromogen Component A	0.2 mL	RTU
Chromogen Component B	4 mL	RTU
Signal Enhancer	5 mL	RTU
Counter Staining Reagent	5 mL	RTU
Mounting Media	5 mL	RTU
Control Slide	1 slide (Optional)	FFPE
Datasheet	1 Copy	
Manual	1 Copy	

Storage Instructions

All the reagents are stored at 2-8°C. The kit is stable for 6 months from the date of receipt.

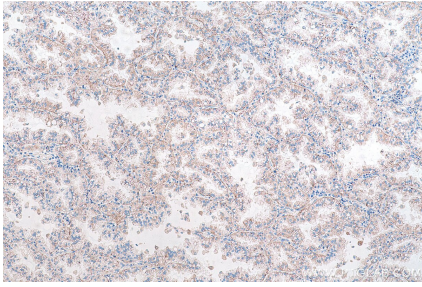
Background

GALK1, also named as GALK, belongs to the GHMP kinase family and GalK subfamily. GALK1, located on chromosome 17q24, encodes galactokinase and is involved in galactose metabolism.

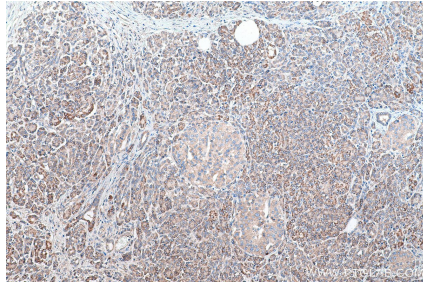
Synonyms

Galactokinase, galactokinase 1, Galactose kinase, GALK, GALK1, GK1

Selected Validation Data



Immunohistochemical analysis of paraffin-embedded human lung cancer tissue slide using KHC0896 (GALK1 IHC Kit).



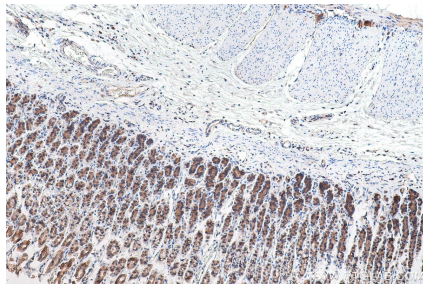
Immunohistochemical analysis of paraffin-embedded human pancreas cancer tissue slide using KHC0896 (GALK1 IHC Kit).



Immunohistochemical analysis of paraffin-embedded mouse colon tissue slide using KHC0896 (GALK1 IHC Kit).



Immunohistochemical analysis of paraffin-embedded rat colon tissue slide using KHC0896 (GALK1 IHC Kit).



Immunohistochemical analysis of paraffin-embedded rat stomach tissue slide using KHC0896 (GALK1 IHC Kit).