

IHC*easy* CSDE1 Ready-To-Use IHC Kit

Catalog Number: **KHC0902**

General Information

Sample type:
FFPE tissue

Cited sample type:

Reactivity:
Human, Mouse, Rat

Cited Reactivity:

Assay type:
Immunohistochemistry

Primary antibody type:
Rabbit Polyclonal

Secondary antibody type:
Polymer-HRP-Goat anti-Rabbit

Kit Component

Component	Size	Concentration
Antigen Retrieval Buffer	100 mL	50×
Washing Buffer	100 mL ×2	20×
Blocking Buffer	5 mL	RTU
Primary Antibody	5 mL	RTU
Secondary Antibody	5 mL	RTU
Chromogen Component A	0.2 mL	RTU
Chromogen Component B	4 mL	RTU
Signal Enhancer	5 mL	RTU
Counter Staining Reagent	5 mL	RTU
Mounting Media	5 mL	RTU
Control Slide	1 slide (Optional)	FFPE
Datasheet	1 Copy	
Manual	1 Copy	

Storage Instructions

All the reagents are stored at 2-8°C. The kit is stable for 6 months from the date of receipt.

Background

CSDE1 (Cold shock domain-containing protein E1), also known as UNR (upstream of N-ras), is an RNA-binding protein involved in the regulation of messenger RNA stability and internal initiation of translation. It is required for internal initiation of translation of human rhinovirus RNA. UNR may be involved in translationally coupled mRNA turnover. Reduced expression of UNR impairs proliferation and differentiation of erythroid blasts. Recent study found that UNR acts as a positive or negative regulator of cell death, depending on the cell type, suggesting manipulation of UNR level may constitute a specific approach to sensitize cancer cells to anticancer treatments.

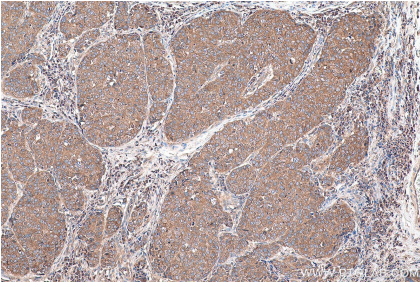
Synonyms

CSDE1, D1S155E, KIAA0885, N ras upstream gene protein, NRU, Protein UNR, RP5 1000E10.3, UNR

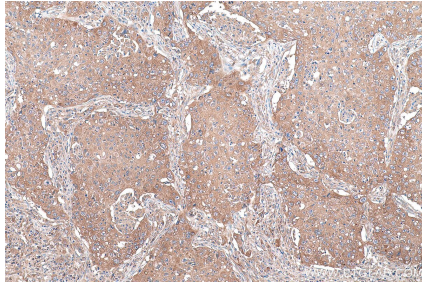
For technical support and original validation data for this product please contact:
T: 1 (888) 4PTGLAB (1-888-478-4522) (toll free in USA), or 1(312) 455-8498 (outside USA)
E: proteintech@ptglab.com
W: ptglab.com

This product is exclusively available under Proteintech Group brand and is not available to purchase from any other manufacturer.

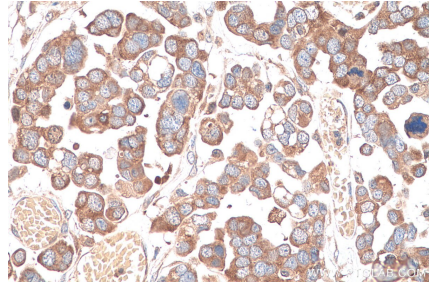
Selected Validation Data



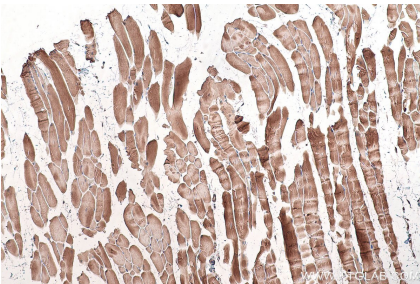
Immunohistochemical analysis of paraffin-embedded human stomach cancer tissue slide using KHC0902 (CSDE1 IHC Kit).



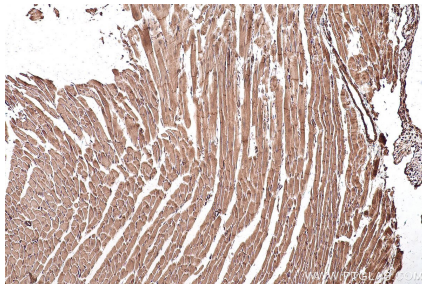
Immunohistochemical analysis of paraffin-embedded human lung cancer tissue slide using KHC0902 (CSDE1 IHC Kit).



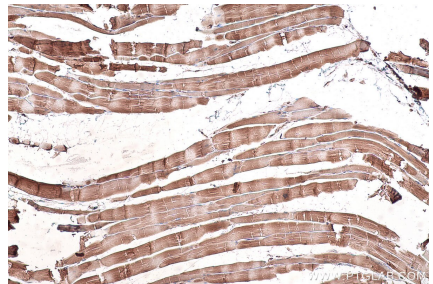
Immunohistochemical analysis of paraffin-embedded human colon cancer tissue slide using KHC0902 (CSDE1 IHC Kit).



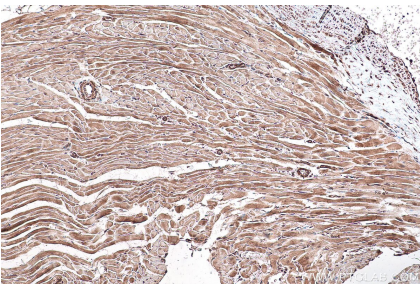
Immunohistochemical analysis of paraffin-embedded mouse skeletal muscle tissue slide using KHC0902 (CSDE1 IHC Kit).



Immunohistochemical analysis of paraffin-embedded mouse heart tissue slide using KHC0902 (CSDE1 IHC Kit).



Immunohistochemical analysis of paraffin-embedded rat skeletal muscle tissue slide using KHC0902 (CSDE1 IHC Kit).



Immunohistochemical analysis of paraffin-embedded rat heart tissue slide using KHC0902 (CSDE1 IHC Kit).