

# IHC*easy* RAP1GDS1 Ready-To-Use IHC Kit

Catalog Number: **KHC0922**

## General Information

**Sample type:**  
FFPE tissue

**Cited sample type:**

**Reactivity:**  
Human, Mouse, Rat

**Cited Reactivity:**

**Assay type:**  
Immunohistochemistry

**Primary antibody type:**  
Rabbit Polyclonal

**Secondary antibody type:**  
Polymer-HRP-Goat anti-Rabbit

## Kit Component

Component	Size	Concentration
Antigen Retrieval Buffer	100 mL	50×
Washing Buffer	100 mL ×2	20×
Blocking Buffer	5 mL	RTU
Primary Antibody	5 mL	RTU
Secondary Antibody	5 mL	RTU
Chromogen Component A	0.2 mL	RTU
Chromogen Component B	4 mL	RTU
Signal Enhancer	5 mL	RTU
Counter Staining Reagent	5 mL	RTU
Mounting Media	5 mL	RTU
Control Slide	1 slide (Optional)	FFPE
Datasheet	1 Copy	
Manual	1 Copy	

## Storage Instructions

All the reagents are stored at 2-8°C. The kit is stable for 6 months from the date of receipt.

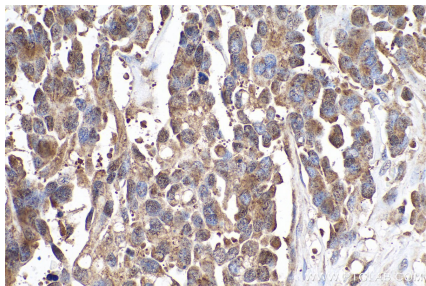
## Background

GDS stimulates the GDP/GTP exchange reaction of a group of small GTP-binding proteins (G proteins), including at least c-Ki-ras p21, smg p21A, smg p21B, rhoA p21 and rhoB p21, by stimulating the dissociation of GDP from and the subsequent binding of GTP to each small G protein. The small GTPase Rap1, which is activated by a large variety of stimuli, functions in the control of integrin-mediated cell adhesion. RAP1GDS1 (synonym: GDS1) is one of RAP1 GTP-GDP dissociation stimulators.

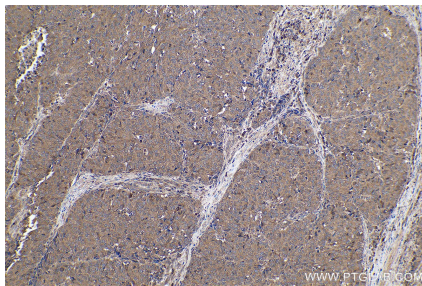
## Synonyms

Exchange factor smgGDS, GDS1, RAP1GDS1, SMG GDS protein, SmgGDS

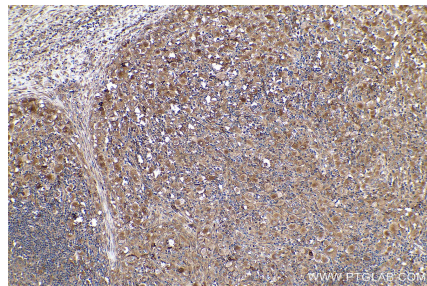
## Selected Validation Data



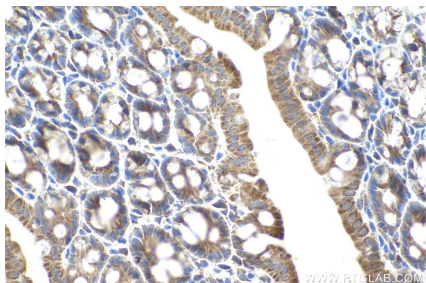
Immunohistochemical analysis of paraffin-embedded human colon cancer tissue slide using KHC0922 (RAP1GDS1 IHC Kit).



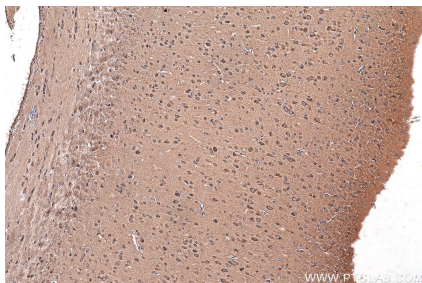
Immunohistochemical analysis of paraffin-embedded human stomach cancer tissue slide using KHC0922 (RAP1GDS1 IHC Kit).



Immunohistochemical analysis of paraffin-embedded human lymphoma tissue slide using KHC0922 (RAP1GDS1 IHC Kit).



Immunohistochemical analysis of paraffin-embedded mouse colon tissue slide using KHC0922 (RAP1GDS1 IHC Kit).



Immunohistochemical analysis of paraffin-embedded mouse brain tissue slide using KHC0922 (RAP1GDS1 IHC Kit).



Immunohistochemical analysis of paraffin-embedded rat colon tissue slide using KHC0922 (RAP1GDS1 IHC Kit).