

IHC*easy* TRIM24 Ready-To-Use IHC Kit

Catalog Number: **KHC1176**

General Information

Sample type:
FFPE tissue

Cited sample type:

Reactivity:
Human, Mouse, Rat

Cited Reactivity:

Assay type:
Immunohistochemistry

Primary antibody type:
Mouse Monoclonal

Secondary antibody type:
Polymer-HRP-Goat anti-Mouse

Kit Component

Component	Size	Concentration
Antigen Retrieval Buffer	100 mL	50×
Washing Buffer	100 mL × 2	20×
Blocking Buffer	5 mL	RTU
Primary Antibody	5 mL	RTU
Secondary Antibody	5 mL	RTU
Chromogen Component A	0.2 mL	RTU
Chromogen Component B	4 mL	RTU
Signal Enhancer	5 mL	RTU
Counter Staining Reagent	5 mL	RTU
Mounting Media	5 mL	RTU
Control Slide	1 slide (Optional)	FFPE
Datasheet	1 Copy	
Manual	1 Copy	

Storage Instructions

All the reagents are stored at 2-8°C. The kit is stable for 6 months from the date of receipt.

Background

TRIM24, also named as RNF82, TIF1 and TIF1A, interacts selectively in vitro with the AF2-activating domain of the estrogen receptors. Association with DNA-bound estrogen receptors, it requires the presence of estradiol. It is a regulation protein of P53. Defects in TRIM24 are a cause of thyroid papillary carcinoma (TPC) which is a common tumor of the thyroid that typically arises as an irregular, solid or cystic mass from otherwise normal thyroid tissue.

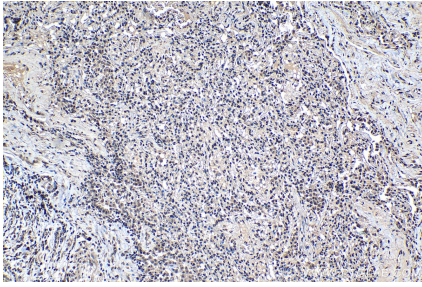
Synonyms

hTIF1, PTC6, RING finger protein 82, RNF82, TF1A, TIF1, TIF1 alpha, TIF1A, TIF1ALPHA, TRIM24, tripartite motif containing 24

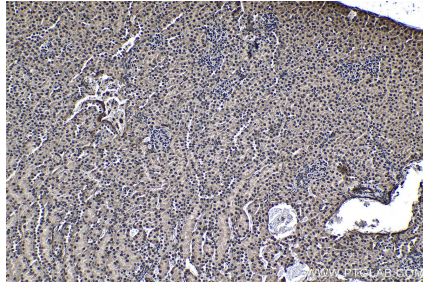
For technical support and original validation data for this product please contact:
T: 1 (888) 4PTGLAB (1-888-478-4522) (toll free in USA), or 1(312) 455-8498 (outside USA) E: proteintech@ptglab.com W: ptglab.com

This product is exclusively available under Proteintech Group brand and is not available to purchase from any other manufacturer.

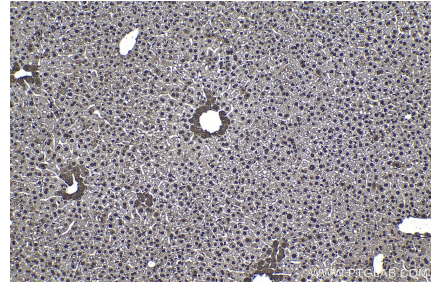
Selected Validation Data



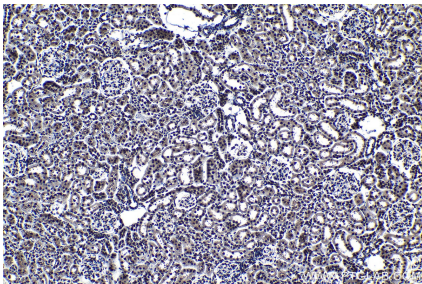
Immunohistochemical analysis of paraffin-embedded human lung cancer tissue slide using KHC1176 (TRIM24 IHC Kit).



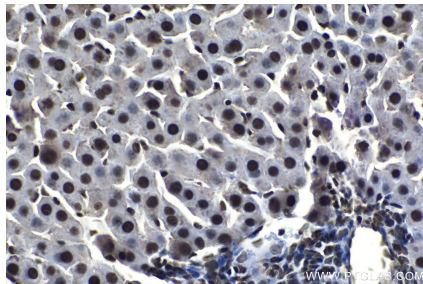
Immunohistochemical analysis of paraffin-embedded mouse kidney tissue slide using KHC1176 (TRIM24 IHC Kit).



Immunohistochemical analysis of paraffin-embedded mouse liver tissue slide using KHC1176 (TRIM24 IHC Kit).



Immunohistochemical analysis of paraffin-embedded rat kidney tissue slide using KHC1176 (TRIM24 IHC Kit).



Immunohistochemical analysis of paraffin-embedded rat liver tissue slide using KHC1176 (TRIM24 IHC Kit).