

IHC*easy* CRM1 Ready-To-Use IHC Kit

Catalog Number: **KHC1213**

General Information

Sample type:
FFPE tissue

Cited sample type:

Reactivity:
Human, Mouse, Rat

Cited Reactivity:

Assay type:
Immunohistochemistry

Primary antibody type:
Rabbit Polyclonal

Secondary antibody type:
Polymer-HRP-Goat anti-Rabbit

Kit Component

Component	Size	Concentration
Antigen Retrieval Buffer	100 mL	50×
Washing Buffer	100 mL ×2	20×
Blocking Buffer	5 mL	RTU
Primary Antibody	5 mL	RTU
Secondary Antibody	5 mL	RTU
Chromogen Component A	0.2 mL	RTU
Chromogen Component B	4 mL	RTU
Signal Enhancer	5 mL	RTU
Counter Staining Reagent	5 mL	RTU
Mounting Media	5 mL	RTU
Control Slide	1 slide (Optional)	FFPE
Datasheet	1 Copy	
Manual	1 Copy	

Storage Instructions

All the reagents are stored at 2-8°C. The kit is stable for 6 months from the date of receipt.

Background

CRM1 (chromosome region maintenance 1, also known as exportin-1 or XPO1), a member of the karyopherin β family of transport receptors, is an important nuclear export receptor recognizing proteins bearing a leucine-rich nuclear export signal. CRM1 is the major receptor for the export of proteins out of the nucleus and is also required for transport of many RNAs. In addition to nuclear export, CRM1 also plays a role in centrosome duplication and spindle assembly. Elevated CRM1 expression has been reported in several cancers, which implicates CRM1 as a potential anti-cancer drug target.

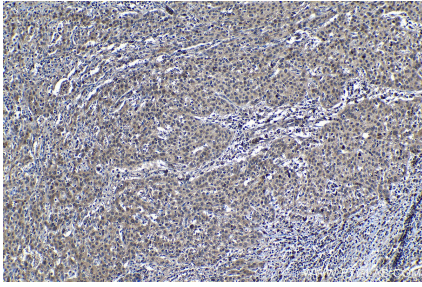
Synonyms

CRM1, Exp1, Exportin 1, XPO1

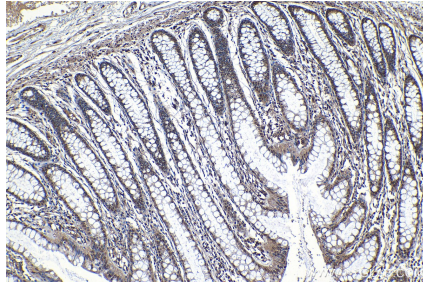
For technical support and original validation data for this product please contact:
T: 1 (888) 4PTGLAB (1-888-478-4522) (toll free in USA), or 1(312) 455-8498 (outside USA)
E: proteintech@ptglab.com
W: ptglab.com

This product is exclusively available under Proteintech Group brand and is not available to purchase from any other manufacturer.

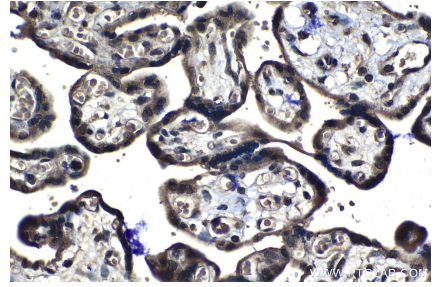
Selected Validation Data



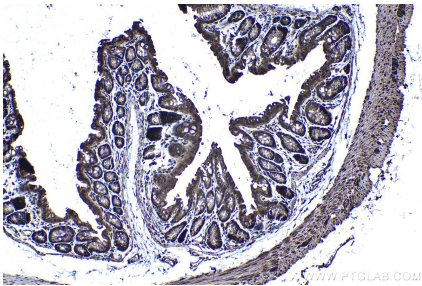
Immunohistochemical analysis of paraffin-embedded human cervical cancer tissue slide using KHC1213 (CRM1 IHC Kit).



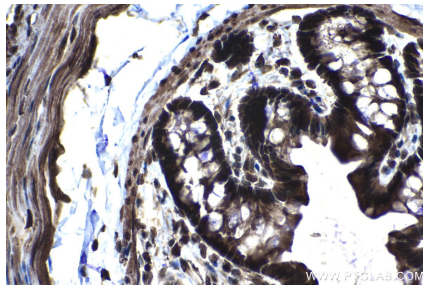
Immunohistochemical analysis of paraffin-embedded human colon tissue slide using KHC1213 (CRM1 IHC Kit).



Immunohistochemical analysis of paraffin-embedded human placenta tissue slide using KHC1213 (CRM1 IHC Kit).



Immunohistochemical analysis of paraffin-embedded mouse colon tissue slide using KHC1213 (CRM1 IHC Kit).



Immunohistochemical analysis of paraffin-embedded rat colon tissue slide using KHC1213 (CRM1 IHC Kit).