

# IHC*easy* GRB7 Ready-To-Use IHC Kit

Catalog Number: **KHC1285**

## General Information

**Sample type:**  
FFPE tissue

**Cited sample type:**

**Reactivity:**  
Human, Mouse

**Cited Reactivity:**

**Assay type:**  
Immunohistochemistry

**Primary antibody type:**  
Rabbit Polyclonal

**Secondary antibody type:**  
Polymer-HRP-Goat anti-Rabbit

## Kit Component

Component	Size	Concentration
Antigen Retrieval Buffer	100 mL	50×
Washing Buffer	100 mL ×2	20×
Blocking Buffer	5 mL	RTU
Primary Antibody	5 mL	RTU
Secondary Antibody	5 mL	RTU
Chromogen Component A	0.2 mL	RTU
Chromogen Component B	4 mL	RTU
Signal Enhancer	5 mL	RTU
Counter Staining Reagent	5 mL	RTU
Mounting Media	5 mL	RTU
Control Slide	1 slide (Optional)	FFPE
Datasheet	1 Copy	
Manual	1 Copy	

## Storage Instructions

All the reagents are stored at 2-8°C. The kit is stable for 6 months from the date of receipt.

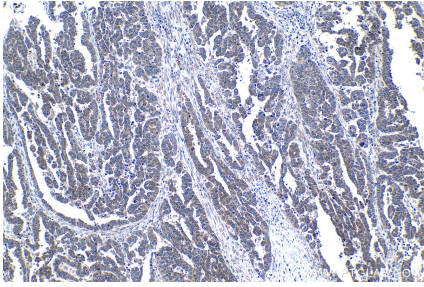
## Background

GRB7 belongs to a family of adapter proteins. This family, including Grb10, Grb7 and Grb 14, contains a proline-rich, a RA, a PH, a BPS and SH2 domain. GRB7 associate with a number of receptors including EGFR and FAK. Functions of GRB7 include mobility because it associates receptors such FAK, and direct evidence from overexpression of this proteins.

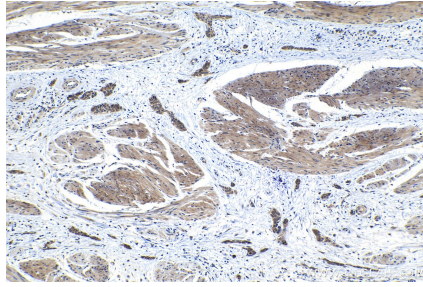
## Synonyms

B47, GRB7, GRB7 adapter protein

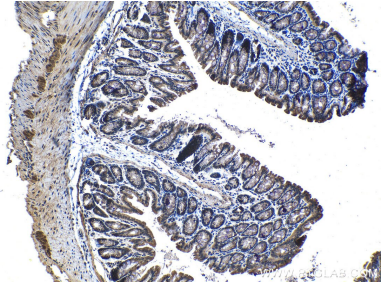
## Selected Validation Data



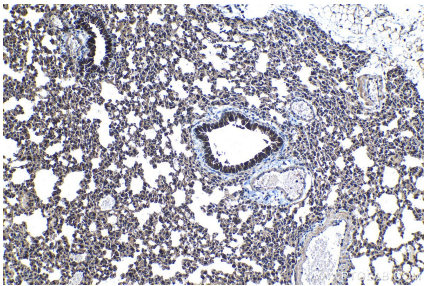
Immunohistochemical analysis of paraffin-embedded human ovary tumor tissue slide using KHC1285 (GRB7 IHC Kit).



Immunohistochemical analysis of paraffin-embedded human urothelial carcinoma tissue slide using KHC1285 (GRB7 IHC Kit).



Immunohistochemical analysis of paraffin-embedded mouse colon tissue slide using KHC1285 (GRB7 IHC Kit).



Immunohistochemical analysis of paraffin-embedded mouse lung tissue slide using KHC1285 (GRB7 IHC Kit).