

IHC*easy* KLK8 Ready-To-Use IHC Kit

Catalog Number: **KHC1328**

General Information

Sample type:
FFPE tissue

Cited sample type:

Reactivity:
Human, Mouse

Cited Reactivity:

Assay type:
Immunohistochemistry

Primary antibody type:
Rabbit Polyclonal

Secondary antibody type:
Polymer-HRP-Goat anti-Rabbit

Kit Component

Component	Size	Concentration
Antigen Retrieval Buffer	100 mL	50×
Washing Buffer	100 mL ×2	20×
Blocking Buffer	5 mL	RTU
Primary Antibody	5 mL	RTU
Secondary Antibody	5 mL	RTU
Chromogen Component A	0.2 mL	RTU
Chromogen Component B	4 mL	RTU
Signal Enhancer	5 mL	RTU
Counter Staining Reagent	5 mL	RTU
Mounting Media	5 mL	RTU
Control Slide	1 slide (Optional)	FFPE
Datasheet	1 Copy	
Manual	1 Copy	

Storage Instructions

All the reagents are stored at 2-8°C. The kit is stable for 6 months from the date of receipt.

Background

KLK8 (Kallikrein-8) is also named as NRPN, PRSS19, TADG14. It is a new member of the human kallikrein family, which is predicted to be secreted and expected to be present in biological fluids. The protein is detectable in ovarian cancer tissue extracts, serum, and ascites fluid, indicating that it may serve as a new ovarian cancer marker. KLK8 has one predicted glycosylation site and it has some isoforms produced by alternative splicing.

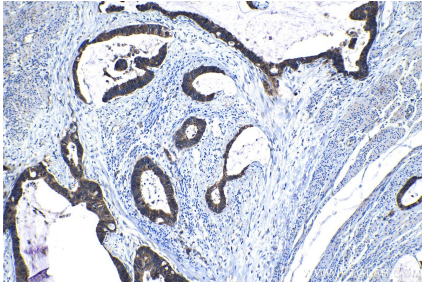
Synonyms

hK8, HNP, Kallikrein 8, kallikrein related peptidase 8, KLK8, Neuropsin, NP, NRPN, Ovasin, PRSS19, Serine protease 19, Serine protease TADG 14, TADG14

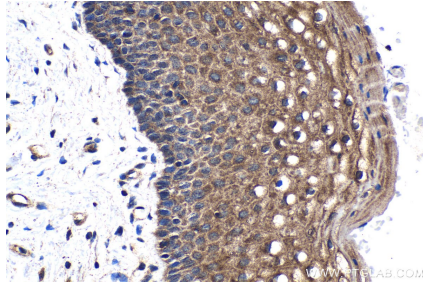
For technical support and original validation data for this product please contact:
T: 1 (888) 4PTGLAB (1-888-478-4522) (toll free in USA), or 1(312) 455-8498 (outside USA)
E: proteintech@ptglab.com
W: ptglab.com

This product is exclusively available under Proteintech Group brand and is not available to purchase from any other manufacturer.

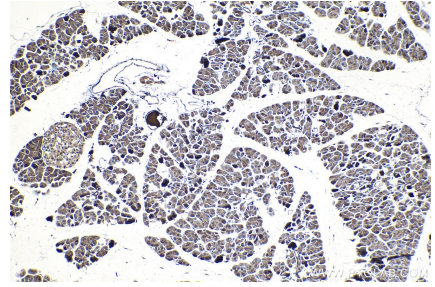
Selected Validation Data



Immunohistochemical analysis of paraffin-embedded human urothelial carcinoma tissue slide using KHC1328 (KLK8 IHC Kit).



Immunohistochemical analysis of paraffin-embedded human cervical cancer tissue slide using KHC1328 (KLK8 IHC Kit).



Immunohistochemical analysis of paraffin-embedded mouse pancreas tissue slide using KHC1328 (KLK8 IHC Kit).