

# IHC*easy* TSC22D1 Ready-To-Use IHC Kit

Catalog Number: **KHC1341**

## General Information

**Sample type:**  
FFPE tissue

**Cited sample type:**

**Reactivity:**  
Human, Mouse, Rat

**Cited Reactivity:**

**Assay type:**  
Immunohistochemistry

**Primary antibody type:**  
Rabbit Polyclonal

**Secondary antibody type:**  
Polymer-HRP-Goat anti-Rabbit

## Kit Component

Component	Size	Concentration
Antigen Retrieval Buffer	100 mL	50×
Washing Buffer	100 mL ×2	20×
Blocking Buffer	5 mL	RTU
Primary Antibody	5 mL	RTU
Secondary Antibody	5 mL	RTU
Chromogen Component A	0.2 mL	RTU
Chromogen Component B	4 mL	RTU
Signal Enhancer	5 mL	RTU
Counter Staining Reagent	5 mL	RTU
Mounting Media	5 mL	RTU
Control Slide	1 slide (Optional)	FFPE
Datasheet	1 Copy	
Manual	1 Copy	

## Storage Instructions

All the reagents are stored at 2-8°C. The kit is stable for 6 months from the date of receipt.

## Background

TSC22 domain family 1, transforming growth factor beta 1 induced transcript 4, (TSC22D1, synonyms: TSC22, TGFB14, MGC17597) is a member of a family of leucine zipper containing transcription factors with repressor activity and belongs to the large family of early response genes. TSC-22 regulates cell growth and differentiation, and cell death. Leucine zipper structure of TSC22 inhibits the anchorage independent growth of cancer cells. TSC-22 is also an important downstream component of peroxisome proliferator-activated receptor (PPAR) and TGF-beta signaling during intestinal epithelial cell differentiation.

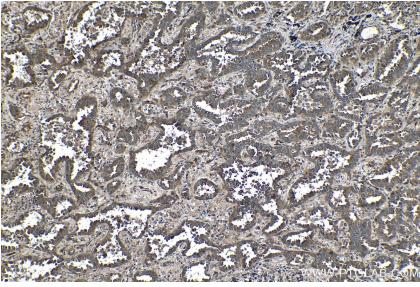
## Synonyms

Cerebral protein 2, KIAA1994, Regulatory protein TSC 22, RP11 269C23.2, TGFB14, TSC22, TSC22 domain family protein 1, TSC22 domain family, member 1, TSC22D1

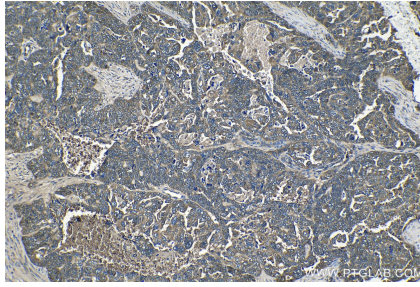
For technical support and original validation data for this product please contact:  
T: 1 (888) 4PTGLAB (1-888-478-4522) (toll free in USA), or 1(312) 455-8498 (outside USA)  
E: [proteintech@ptglab.com](mailto:proteintech@ptglab.com)  
W: [ptglab.com](http://ptglab.com)

This product is exclusively available under Proteintech Group brand and is not available to purchase from any other manufacturer.

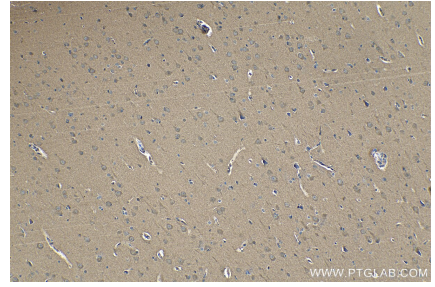
## Selected Validation Data



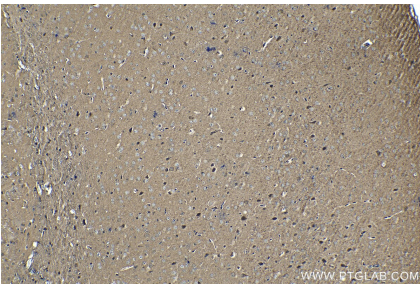
Immunohistochemical analysis of paraffin-embedded human lung cancer tissue slide using KHC1341 (TSC22D1 IHC Kit).



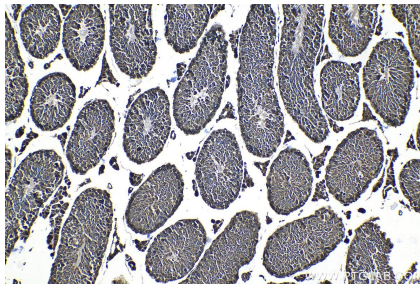
Immunohistochemical analysis of paraffin-embedded human ovary tumor tissue slide using KHC1341 (TSC22D1 IHC Kit).



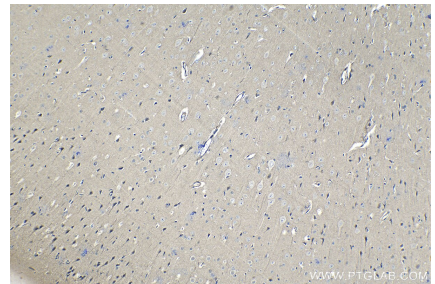
Immunohistochemical analysis of paraffin-embedded human gliomas tissue slide using KHC1341 (TSC22D1 IHC Kit).



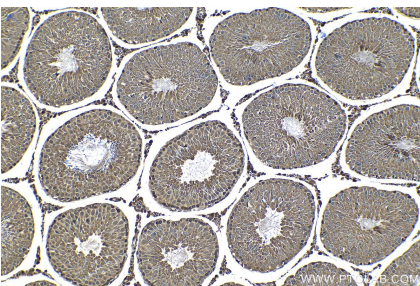
Immunohistochemical analysis of paraffin-embedded mouse brain tissue slide using KHC1341 (TSC22D1 IHC Kit).



Immunohistochemical analysis of paraffin-embedded mouse testis tissue slide using KHC1341 (TSC22D1 IHC Kit).



Immunohistochemical analysis of paraffin-embedded rat brain tissue slide using KHC1341 (TSC22D1 IHC Kit).



Immunohistochemical analysis of paraffin-embedded rat testis tissue slide using KHC1341 (TSC22D1 IHC Kit).