

# IHC*easy* MTDH Ready-To-Use IHC Kit

Catalog Number: **KHC1366**

## General Information

**Sample type:**  
FFPE tissue

**Cited sample type:**

**Reactivity:**  
Human, Mouse, Rat

**Cited Reactivity:**

**Assay type:**  
Immunohistochemistry

**Primary antibody type:**  
Rabbit Polyclonal

**Secondary antibody type:**  
Polymer-HRP-Goat anti-Rabbit

## Kit Component

Component	Size	Concentration
Antigen Retrieval Buffer	100 mL	50×
Washing Buffer	100 mL × 2	20×
Blocking Buffer	5 mL	RTU
Primary Antibody	5 mL	RTU
Secondary Antibody	5 mL	RTU
Chromogen Component A	0.2 mL	RTU
Chromogen Component B	4 mL	RTU
Signal Enhancer	5 mL	RTU
Counter Staining Reagent	5 mL	RTU
Mounting Media	5 mL	RTU
Control Slide	1 slide (Optional)	FFPE
Datasheet	1 Copy	
Manual	1 Copy	

## Storage Instructions

All the reagents are stored at 2-8°C. The kit is stable for 6 months from the date of receipt.

## Background

MTDH, also known as AEG-1, is a single-pass transmembrane protein with its gene located at chromosome 8q22, the abnormalities of which have been identified in several tumor types. MTDH is overexpressed in a number of malignancies, such as breast cancer, malignant glioma, and neuroblastoma, and its overexpression is associated with poor clinical outcome. MTDH plays an important role in the regulation of carcinogenesis and tumor progression.

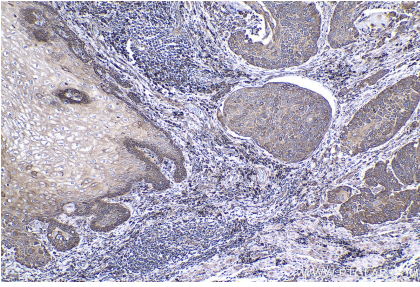
## Synonyms

3D3, 3D3/LYRIC, AEG 1, AEG1, AEG-1/MTDH-Specific, LYRIC, LYRIC/3D3, metadherin, Metastasis adhesion protein, MTDH, Protein LYRIC

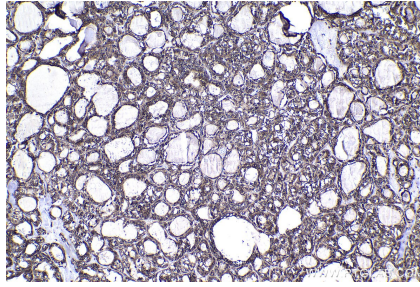
For technical support and original validation data for this product please contact:  
T: 1 (888) 4PTGLAB (1-888-478-4522) (toll free in USA), or 1(312) 455-8498 (outside USA)  
E: [proteintech@ptglab.com](mailto:proteintech@ptglab.com)  
W: [ptglab.com](http://ptglab.com)

This product is exclusively available under Proteintech Group brand and is not available to purchase from any other manufacturer.

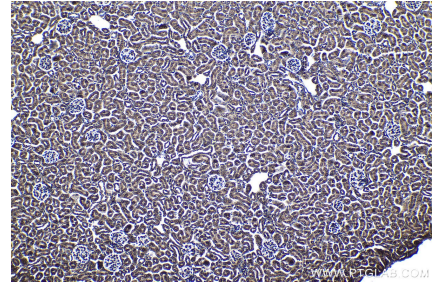
## Selected Validation Data



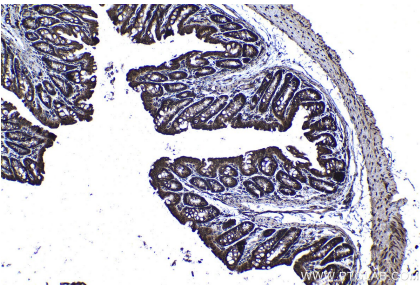
Immunohistochemical analysis of paraffin-embedded human oesophagus cancer tissue slide using KHC1366 (MTDH IHC Kit).



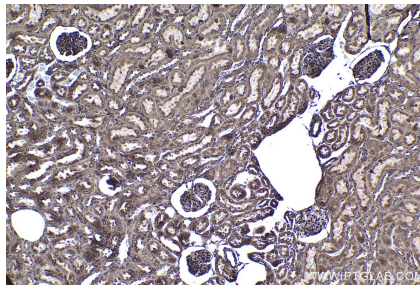
Immunohistochemical analysis of paraffin-embedded human thyroid cancer tissue slide using KHC1366 (MTDH IHC Kit).



Immunohistochemical analysis of paraffin-embedded mouse kidney tissue slide using KHC1366 (MTDH IHC Kit).



Immunohistochemical analysis of paraffin-embedded mouse colon tissue slide using KHC1366 (MTDH IHC Kit).



Immunohistochemical analysis of paraffin-embedded rat kidney tissue slide using KHC1366 (MTDH IHC Kit).



Immunohistochemical analysis of paraffin-embedded rat colon tissue slide using KHC1366 (MTDH IHC Kit).