

# IHCeasy PON1 Ready-To-Use IHC Kit

Catalog Number: **KHC1371**

## General Information

Sample type:  
FFPE tissue  
Cited sample type:  
Reactivity:  
Human  
Cited Reactivity:

Assay type:  
Immunohistochemistry  
Primary antibody type:  
Rabbit Polyclonal  
Secondary antibody type:  
Polymer-HRP-Goat anti-Rabbit

## Kit Component

Component	Size	Concentration
Antigen Retrieval Buffer	100 mL	50×
Washing Buffer	100 mL ×2	20×
Blocking Buffer	5 mL	RTU
Primary Antibody	5 mL	RTU
Secondary Antibody	5 mL	RTU
Chromogen Component A	0.2 mL	RTU
Chromogen Component B	4 mL	RTU
Signal Enhancer	5 mL	RTU
Counter Staining Reagent	5 mL	RTU
Mounting Media	5 mL	RTU
Control Slide	1 slide (Optional)	FFPE
Datasheet	1 Copy	
Manual	1 Copy	

## Storage Instructions

All the reagents are stored at 2-8°C. The kit is stable for 6 months from the date of receipt.

## Background

PON1, also named as PON and K-45, belongs to the paraoxonase family. PON1 hydrolyzes the toxic metabolites of a variety of organophosphorus insecticides. It can capable of hydrolyzing a broad spectrum of organophosphate substrates and a number of aromatic carboxylic acid esters. PON1 may mediate an enzymatic protection of low density lipoproteins against oxidative modification and the consequent series of events leading to atheroma formation. Primary antibody in this kit has cross-reaction to PON2 and PON3.

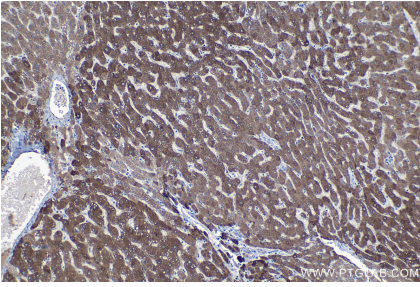
## Synonyms

A esterase 1, Aromatic esterase 1, ESA, K 45, paraoxonase 1, PON, PON 1, PON1, Serum arylalkylphosphatase 1

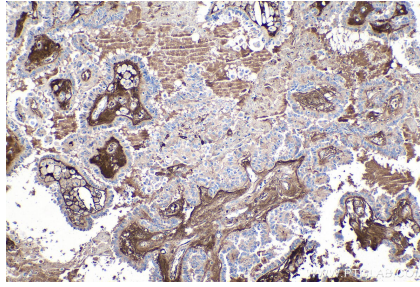
For technical support and original validation data for this product please contact:  
T: 1 (888) 4PTGLAB (1-888-478-4522) (toll free in USA), or 1(312) 455-8498 (outside USA)  
E: [proteintech@ptglab.com](mailto:proteintech@ptglab.com)  
W: [ptglab.com](http://ptglab.com)

This product is exclusively available under Proteintech Group brand and is not available to purchase from any other manufacturer.

## Selected Validation Data



Immunohistochemical analysis of paraffin-embedded human liver tissue slide using KHC1371 (PON1 IHC Kit).



Immunohistochemical analysis of paraffin-embedded human thyroid cancer tissue slide using KHC1371 (PON1 IHC Kit).