

IHC*easy* HIVEP1 Ready-To-Use IHC Kit

Catalog Number: **KHC1535**

General Information

Sample type:
FFPE tissue

Cited sample type:

Reactivity:
Human, Mouse, Rat

Cited Reactivity:

Assay type:
Immunohistochemistry

Primary antibody type:
Rabbit Polyclonal

Secondary antibody type:
Polymer-HRP-Goat anti-Rabbit

Kit Component

Component	Size	Concentration
Antigen Retrieval Buffer	100 mL	50×
Washing Buffer	100 mL ×2	20×
Blocking Buffer	5 mL	RTU
Primary Antibody	5 mL	RTU
Secondary Antibody	5 mL	RTU
Chromogen Component A	0.2 mL	RTU
Chromogen Component B	4 mL	RTU
Signal Enhancer	5 mL	RTU
Counter Staining Reagent	5 mL	RTU
Mounting Media	5 mL	RTU
Control Slide	1 slide (Optional)	FFPE
Datasheet	1 Copy	
Manual	1 Copy	

Storage Instructions

All the reagents are stored at 2-8°C. The kit is stable for 6 months from the date of receipt.

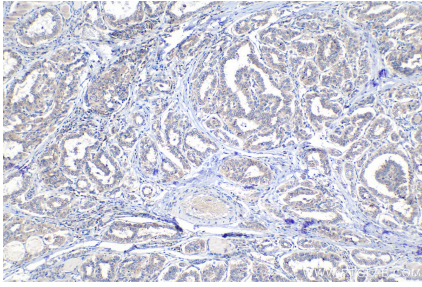
Background

HIVEP1 (human immunodeficiency virus type I enhancer binding protein 1), also known as CIRIP (cirhin interaction protein), MBP-1 (major histocompatibility complex binding protein 1), ZNF40, CRYBP1 or PRDII-BF1 (positive regulatory domain II binding factor 1), is a 2718 amino acid DNA-binding protein, which contains five C2H2-type zinc fingers. HIVEP1 may also participate in T-cell activation and apoptosis.

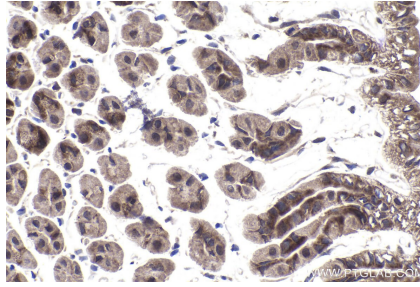
Synonyms

Cirhin interaction protein, CIRIP, CRYBP1, GAAP, HIV EP1, HIVEP1, MBP 1, PRDII BF1, Schnurri 1, ZAS1, Zinc finger protein 40, ZNF40, ZNF40A

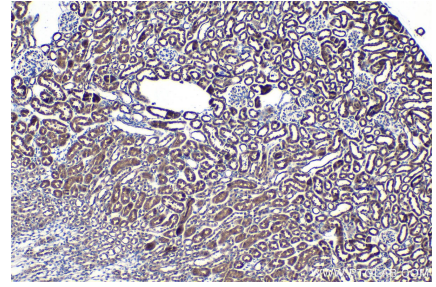
Selected Validation Data



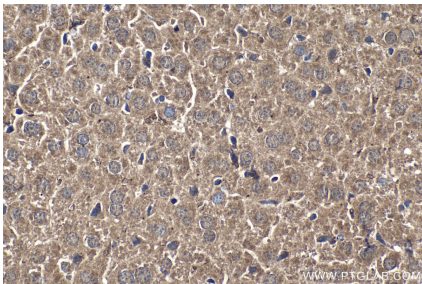
Immunohistochemical analysis of paraffin-embedded human thyroid cancer tissue slide using KHC1535 (HIVEP1 IHC Kit).



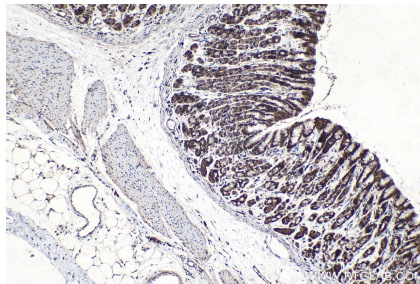
Immunohistochemical analysis of paraffin-embedded mouse stomach tissue slide using KHC1535 (HIVEP1 IHC Kit).



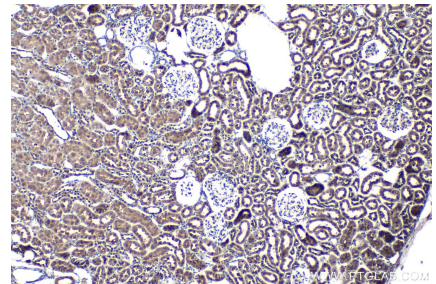
Immunohistochemical analysis of paraffin-embedded mouse kidney tissue slide using KHC1535 (HIVEP1 IHC Kit).



Immunohistochemical analysis of paraffin-embedded mouse liver tissue slide using KHC1535 (HIVEP1 IHC Kit).



Immunohistochemical analysis of paraffin-embedded rat stomach tissue slide using KHC1535 (HIVEP1 IHC Kit).



Immunohistochemical analysis of paraffin-embedded rat kidney tissue slide using KHC1535 (HIVEP1 IHC Kit).