

# IHC*easy* CRADD Ready-To-Use IHC Kit

Catalog Number: **KHC1654**

## General Information

**Sample type:**  
FFPE tissue

**Cited sample type:**

**Reactivity:**  
Human, Mouse, Rat

**Cited Reactivity:**

**Assay type:**  
Immunohistochemistry

**Primary antibody type:**  
Rabbit Polyclonal

**Secondary antibody type:**  
Polymer-HRP-Goat anti-Rabbit

## Kit Component

| Component                | Size               | Concentration |
|--------------------------|--------------------|---------------|
| Antigen Retrieval Buffer | 100 mL             | 50×           |
| Washing Buffer           | 100 mL ×2          | 20×           |
| Blocking Buffer          | 5 mL               | RTU           |
| Primary Antibody         | 5 mL               | RTU           |
| Secondary Antibody       | 5 mL               | RTU           |
| Chromogen Component A    | 0.2 mL             | RTU           |
| Chromogen Component B    | 4 mL               | RTU           |
| Signal Enhancer          | 5 mL               | RTU           |
| Counter Staining Reagent | 5 mL               | RTU           |
| Mounting Media           | 5 mL               | RTU           |
| Control Slide            | 1 slide (Optional) | FFPE          |
| Datasheet                | 1 Copy             |               |
| Manual                   | 1 Copy             |               |

## Storage Instructions

All the reagents are stored at 2-8°C. The kit is stable for 6 months from the date of receipt.

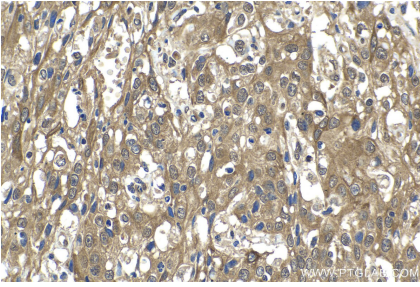
## Background

RAIDD, also named as CRADD, is an apoptotic adaptor molecule specific for caspase-2 and FASL/TNF receptor-interacting protein RIP. In the presence of RIP and TRADD, CRADD recruits caspase-2 to the TNFR-1 signalling complex. CRADD interacts with BCL10 through its caspase recruitment domain and suppresses interactions between BCL10 and CARMA1. It is a negative regulator of the CARMA1 signalosome and suppressor of Th1- and Th17-mediated inflammatory responses.

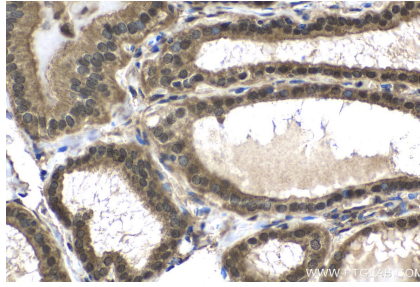
## Synonyms

CRADD, RAIDD

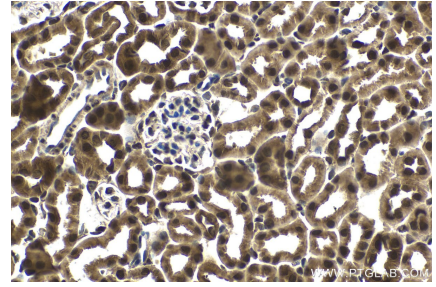
## Selected Validation Data



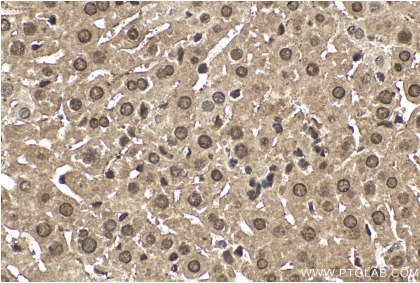
Immunohistochemical analysis of paraffin-embedded human cervical cancer tissue slide using KHC1654 (CRADD IHC Kit).



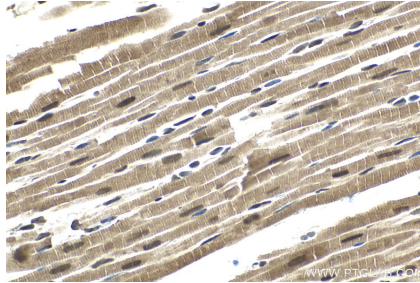
Immunohistochemical analysis of paraffin-embedded human thyroid cancer tissue slide using KHC1654 (CRADD IHC Kit).



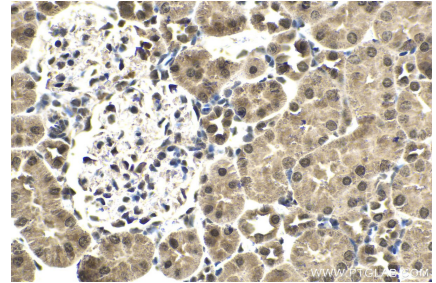
Immunohistochemical analysis of paraffin-embedded mouse kidney tissue slide using KHC1654 (CRADD IHC Kit).



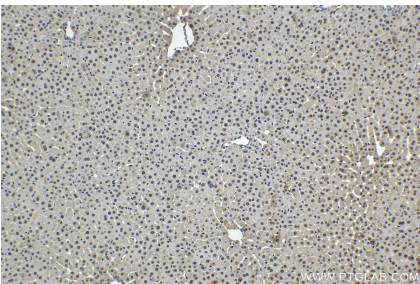
Immunohistochemical analysis of paraffin-embedded mouse liver tissue slide using KHC1654 (CRADD IHC Kit).



Immunohistochemical analysis of paraffin-embedded rat heart tissue slide using KHC1654 (CRADD IHC Kit).



Immunohistochemical analysis of paraffin-embedded rat kidney tissue slide using KHC1654 (CRADD IHC Kit).



Immunohistochemical analysis of paraffin-embedded rat liver tissue slide using KHC1654 (CRADD IHC Kit).