

IHC*easy* MAP2K1/MEK1 Ready-To-Use IHC Kit

Catalog Number: **KHC1670**

General Information

Sample type:
FFPE tissue

Cited sample type:

Reactivity:
Human, Mouse, Rat

Cited Reactivity:

Assay type:
Immunohistochemistry

Primary antibody type:
Mouse Monoclonal

Secondary antibody type:
Polymer-HRP-Goat anti-Mouse

Kit Component

Component	Size	Concentration
Antigen Retrieval Buffer	100 mL	50×
Washing Buffer	100 mL ×2	20×
Blocking Buffer	5 mL	RTU
Primary Antibody	5 mL	RTU
Secondary Antibody	5 mL	RTU
Chromogen Component A	0.2 mL	RTU
Chromogen Component B	4 mL	RTU
Signal Enhancer	5 mL	RTU
Counter Staining Reagent	5 mL	RTU
Mounting Media	5 mL	RTU
Control Slide	1 slide (Optional)	FFPE
Datasheet	1 Copy	
Manual	1 Copy	

Storage Instructions

All the reagents are stored at 2-8°C. The kit is stable for 6 months from the date of receipt.

Background

MEK1 is also named as MAP2K1 (mitogen-activated protein kinase kinase 1), MAPKK1, PRKMK1, MKK1 and belongs to the MAP kinase kinase subfamily. It is a dual-specificity kinase that mediate ERK1 and ERK2 activation during adhesion and growth factor signaling. It also plays an essential role in extra-embryonic ectoderm during placentogenesis.

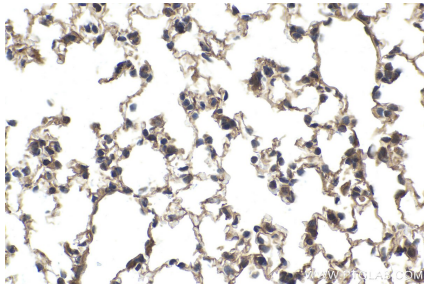
Synonyms

ERK activator kinase 1, MAP kinase kinase 1, MAP2K1, MAPK/ERK kinase 1, MAPKK 1, MEK 1, MKK1, PRKMK1

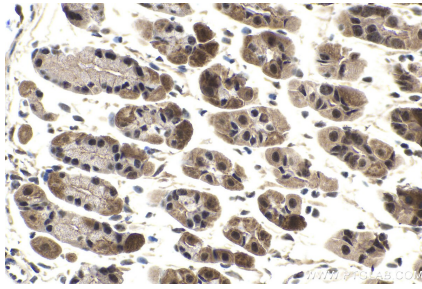
For technical support and original validation data for this product please contact:
T: 1 (888) 4PTGLAB (1-888-478-4522) (toll free in USA), or 1(312) 455-8498 (outside USA)
E: proteintech@ptglab.com
W: ptglab.com

This product is exclusively available under Proteintech Group brand and is not available to purchase from any other manufacturer.

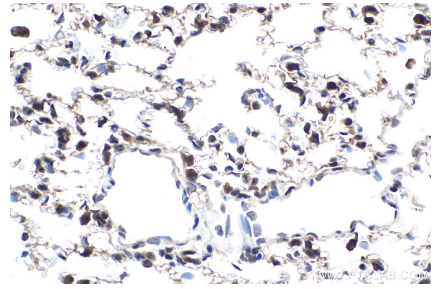
Selected Validation Data



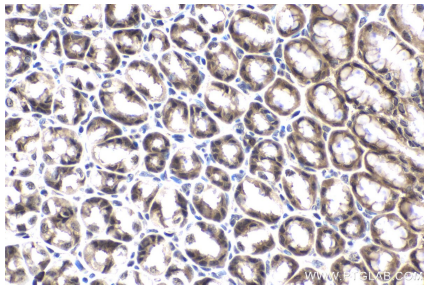
Immunohistochemical analysis of paraffin-embedded mouse lung tissue slide using KHC1670 (MAP2K1/MEK1 IHC Kit).



Immunohistochemical analysis of paraffin-embedded mouse stomach tissue slide using KHC1670 (MAP2K1/MEK1 IHC Kit).



Immunohistochemical analysis of paraffin-embedded rat lung tissue slide using KHC1670 (MAP2K1/MEK1 IHC Kit).



Immunohistochemical analysis of paraffin-embedded rat stomach tissue slide using KHC1670 (MAP2K1/MEK1 IHC Kit).