

IHC*easy* RBPJ Ready-To-Use IHC Kit

Catalog Number: **KHC1679**

General Information

Sample type:
FFPE tissue

Cited sample type:

Reactivity:
Human, Mouse, Rat

Cited Reactivity:

Assay type:
Immunohistochemistry

Primary antibody type:
Rabbit Polyclonal

Secondary antibody type:
Polymer-HRP-Goat anti-Rabbit

Kit Component

Component	Size	Concentration
Antigen Retrieval Buffer	100 mL	50×
Washing Buffer	100 mL × 2	20×
Blocking Buffer	5 mL	RTU
Primary Antibody	5 mL	RTU
Secondary Antibody	5 mL	RTU
Chromogen Component A	0.2 mL	RTU
Chromogen Component B	4 mL	RTU
Signal Enhancer	5 mL	RTU
Counter Staining Reagent	5 mL	RTU
Mounting Media	5 mL	RTU
Control Slide	1 slide (Optional)	FFPE
Datasheet	1 Copy	
Manual	1 Copy	

Storage Instructions

All the reagents are stored at 2-8°C. The kit is stable for 6 months from the date of receipt.

Background

RBPJ, also named as IGKJRB, IGKJRB1, RBPJK, RBPSUH, NY-REN-30, CBF-1 and CSL, belongs to the Su(H) family. It is a transcriptional regulator that plays a central role in Notch signaling, a signaling pathway involved in cell-cell communication that regulates a broad spectrum of cell-fate determinations. RBPJ acts as a transcriptional repressor when it is not associated with Notch proteins. It is specifically binds to the immunoglobulin kappa-type J segment recombination signal sequence. RBPJ binds to the Runx3 promoter in the atrioventricular canal in vivo, and inhibition of Notch reduces RUNX3 expression in the cardiac cushion of embryonic hearts.

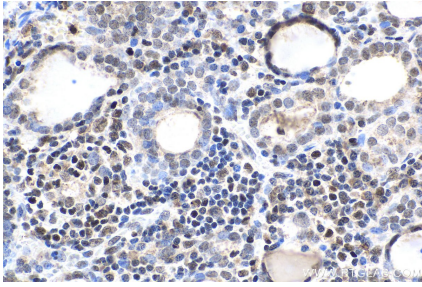
Synonyms

CBF 1, CBF1, cs1, IGKJRB, IGKJRB1, KBF2, RBP J, RBP J kappa, RBP JK, RBPJ, RBPJK, RBPSUH, SUH

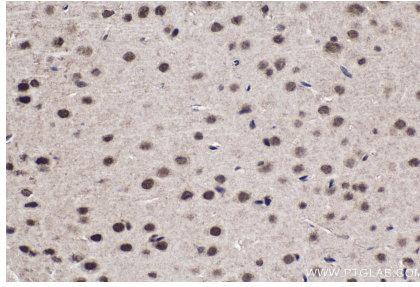
For technical support and original validation data for this product please contact:
T: 1 (888) 4PTGLAB (1-888-478-4522) (toll free in USA), or 1(312) 455-8498 (outside USA)
E: proteintech@ptglab.com
W: ptglab.com

This product is exclusively available under Proteintech Group brand and is not available to purchase from any other manufacturer.

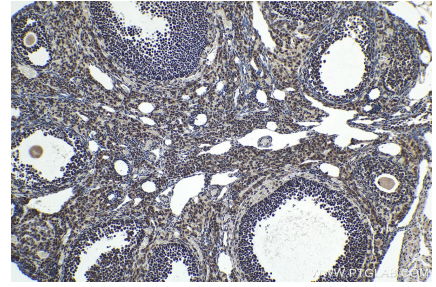
Selected Validation Data



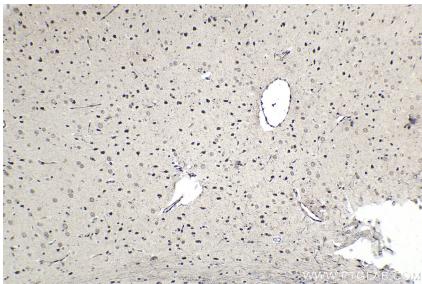
Immunohistochemical analysis of paraffin-embedded human thyroid cancer tissue slide using KHC1679 (RBPJ IHC Kit).



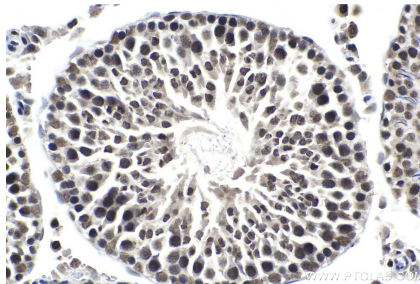
Immunohistochemical analysis of paraffin-embedded mouse brain tissue slide using KHC1679 (RBPJ IHC Kit).



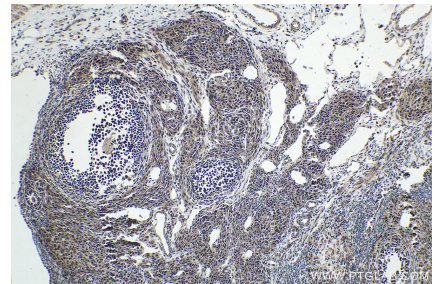
Immunohistochemical analysis of paraffin-embedded mouse ovary tissue slide using KHC1679 (RBPJ IHC Kit).



Immunohistochemical analysis of paraffin-embedded rat brain tissue slide using KHC1679 (RBPJ IHC Kit).



Immunohistochemical analysis of paraffin-embedded rat testis tissue slide using KHC1679 (RBPJ IHC Kit).



Immunohistochemical analysis of paraffin-embedded rat ovary tissue slide using KHC1679 (RBPJ IHC Kit).