

IHC*easy* C1QBP Ready-To-Use IHC Kit

Catalog Number: **KHC1683**

General Information

Sample type:
FFPE tissue

Cited sample type:

Reactivity:
Human, Mouse, Rat

Cited Reactivity:

Assay type:
Immunohistochemistry

Primary antibody type:
Mouse Monoclonal

Secondary antibody type:
Polymer-HRP-Goat anti-Mouse

Kit Component

Component	Size	Concentration
Antigen Retrieval Buffer	100 mL	50×
Washing Buffer	100 mL ×2	20×
Blocking Buffer	5 mL	RTU
Primary Antibody	5 mL	RTU
Secondary Antibody	5 mL	RTU
Chromogen Component A	0.2 mL	RTU
Chromogen Component B	4 mL	RTU
Signal Enhancer	5 mL	RTU
Counter Staining Reagent	5 mL	RTU
Mounting Media	5 mL	RTU
Control Slide	1 slide (Optional)	FFPE
Datasheet	1 Copy	
Manual	1 Copy	

Storage Instructions

All the reagents are stored at 2-8°C. The kit is stable for 6 months from the date of receipt.

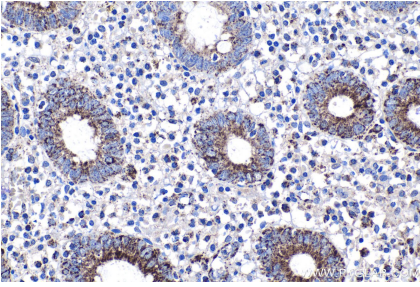
Background

C1QBP, also named as gC1q receptor (gC1qR), p32, p33, and hyaluronan-binding protein 1 (HABP1), is a protein initially copurified with splicing factor SF2. The protein is synthesized as a pro-protein of 282 amino acids (aa) that is post-translationally processed by removal of the initial 73 aa to a mature protein of 209 aa. C1QBP is an evolutionary conserved and ubiquitously expressed multifunctional protein and has been reported to be a predominantly mitochondrial matrix protein involved in inflammation and infection processes, mitochondrial ribosome biogenesis, regulation of apoptosis and nuclear transcription, and pre-mRNA splicing.

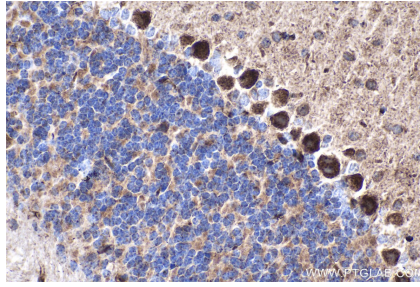
Synonyms

C1QBP, gC1Q R, GC1q R protein, GC1QBP, gC1qR, Glycoprotein gC1qBP, HABP1, Hyaluronan binding protein 1, p32, p33, SF2p32

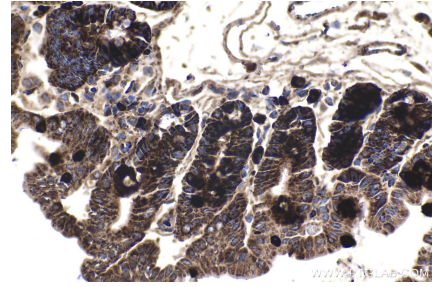
Selected Validation Data



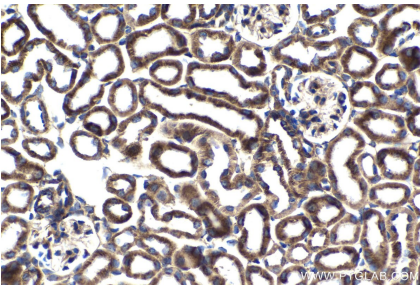
Immunohistochemical analysis of paraffin-embedded human appendicitis tissue slide using KHC1683 (C1QBP IHC Kit).



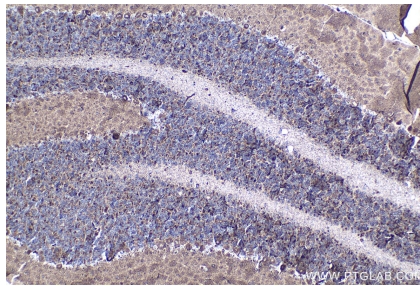
Immunohistochemical analysis of paraffin-embedded mouse cerebellum tissue slide using KHC1683 (C1QBP IHC Kit).



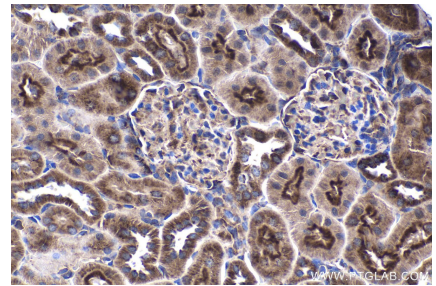
Immunohistochemical analysis of paraffin-embedded mouse small intestine tissue slide using KHC1683 (C1QBP IHC Kit).



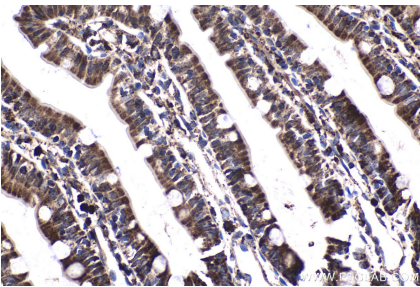
Immunohistochemical analysis of paraffin-embedded mouse kidney tissue slide using KHC1683 (C1QBP IHC Kit).



Immunohistochemical analysis of paraffin-embedded rat cerebellum tissue slide using KHC1683 (C1QBP IHC Kit).



Immunohistochemical analysis of paraffin-embedded rat kidney tissue slide using KHC1683 (C1QBP IHC Kit).



Immunohistochemical analysis of paraffin-embedded rat small intestine tissue slide using KHC1683 (C1QBP IHC Kit).