

# IHC*easy* NFIA Ready-To-Use IHC Kit

Catalog Number: **KHC1693**

## General Information

**Sample type:**  
FFPE tissue

**Cited sample type:**

**Reactivity:**  
Human, Mouse, Rat

**Cited Reactivity:**

**Assay type:**  
Immunohistochemistry

**Primary antibody type:**  
Rabbit Polyclonal

**Secondary antibody type:**  
Polymer-HRP-Goat anti-Rabbit

## Kit Component

Component	Size	Concentration
Antigen Retrieval Buffer	100 mL	50×
Washing Buffer	100 mL ×2	20×
Blocking Buffer	5 mL	RTU
Primary Antibody	5 mL	RTU
Secondary Antibody	5 mL	RTU
Chromogen Component A	0.2 mL	RTU
Chromogen Component B	4 mL	RTU
Signal Enhancer	5 mL	RTU
Counter Staining Reagent	5 mL	RTU
Mounting Media	5 mL	RTU
Control Slide	1 slide (Optional)	FFPE
Datasheet	1 Copy	
Manual	1 Copy	

## Storage Instructions

All the reagents are stored at 2-8°C. The kit is stable for 6 months from the date of receipt.

## Background

The NFI (nuclear factor I) family consists of four members in vertebrates (NFI-A, NFI-B, NFI-C and NFI-X), and the four NFI genes are expressed in unique patterns during mouse embryogenesis and in the adult. Four isoforms of NFIA were found in human and they play various roles in DNA replication, DNA-dependent transcription via their DNA binding property. Multiple residues of NFIA can be phosphorylated resulting in mild shifts of its practical molecular weight. Recent finding also revealed its neuroprotective function in NMDA-induced neuronal damage.

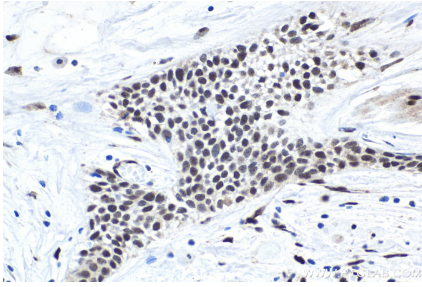
## Synonyms

CTF, KIAA1439, NF I/A, NF1 A, NFI A, NFI L, NFIA, Nuclear factor 1 A type, Nuclear factor 1/A, nuclear factor I/A, TGGCA binding protein

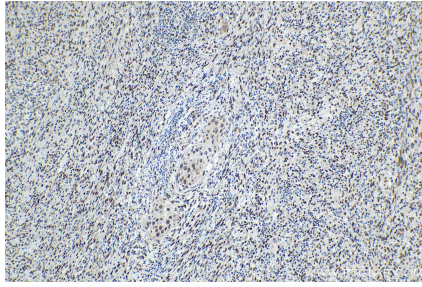
For technical support and original validation data for this product please contact:  
T: 1 (888) 4PTGLAB (1-888-478-4522) (toll free in USA), or 1(312) 455-8498 (outside USA)  
E: [proteintech@ptglab.com](mailto:proteintech@ptglab.com)  
W: [ptglab.com](http://ptglab.com)

This product is exclusively available under Proteintech Group brand and is not available to purchase from any other manufacturer.

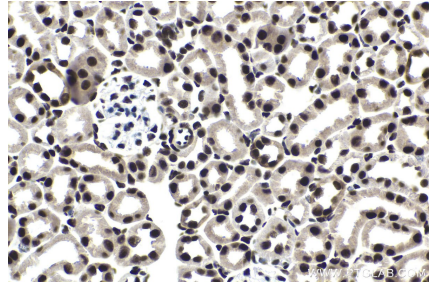
## Selected Validation Data



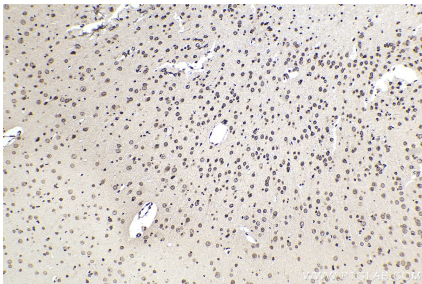
Immunohistochemical analysis of paraffin-embedded human urothelial carcinoma tissue slide using KHC1693 (NFIA IHC Kit).



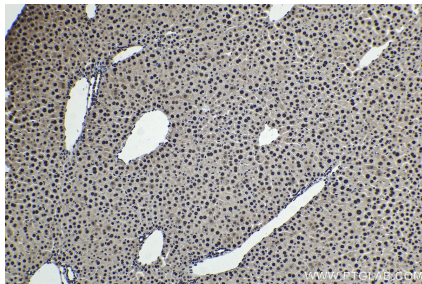
Immunohistochemical analysis of paraffin-embedded human cervical cancer tissue slide using KHC1693 (NFIA IHC Kit).



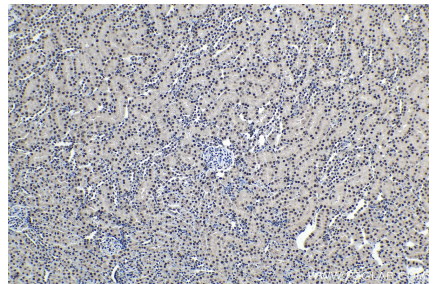
Immunohistochemical analysis of paraffin-embedded mouse kidney tissue slide using KHC1693 (NFIA IHC Kit).



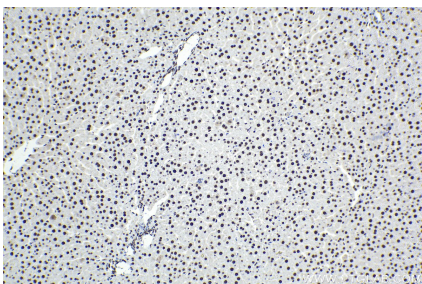
Immunohistochemical analysis of paraffin-embedded mouse brain tissue slide using KHC1693 (NFIA IHC Kit).



Immunohistochemical analysis of paraffin-embedded mouse liver tissue slide using KHC1693 (NFIA IHC Kit).



Immunohistochemical analysis of paraffin-embedded rat kidney tissue slide using KHC1693 (NFIA IHC Kit).



Immunohistochemical analysis of paraffin-embedded rat liver tissue slide using KHC1693 (NFIA IHC Kit).