

IHC*easy* TRIM25 Ready-To-Use IHC Kit

Catalog Number: **KHC1729**

General Information

Sample type:
FFPE tissue

Cited sample type:

Reactivity:
Human, Mouse, Rat

Cited Reactivity:

Assay type:
Immunohistochemistry

Primary antibody type:
Rabbit Polyclonal

Secondary antibody type:
Polymer-HRP-Goat anti-Rabbit

Kit Component

Component	Size	Concentration
Antigen Retrieval Buffer	100 mL	50×
Washing Buffer	100 mL ×2	20×
Blocking Buffer	5 mL	RTU
Primary Antibody	5 mL	RTU
Secondary Antibody	5 mL	RTU
Chromogen Component A	0.2 mL	RTU
Chromogen Component B	4 mL	RTU
Signal Enhancer	5 mL	RTU
Counter Staining Reagent	5 mL	RTU
Mounting Media	5 mL	RTU
Control Slide	1 slide (Optional)	FFPE
Datasheet	1 Copy	
Manual	1 Copy	

Storage Instructions

All the reagents are stored at 2-8°C. The kit is stable for 6 months from the date of receipt.

Background

TRIM25 (tripartite motif-containing 25) is also named as EFP, Z147, ZNF147, RNF147 and belongs to the zinc finger protein family and tripartite motif (TRIM) family. It induces the Lys63-linked ubiquitination of RIG-I, which is crucial for the cytosolic RIG-I signalling pathway to elicit host antiviral innate immunity. It is also essential not only for DDX58 ubiquitination but also for DDX58-mediated interferon-production and antiviral activity in response to RNA virus infection. TRIM25 can be detected in both the cytoplasmic and nuclear.

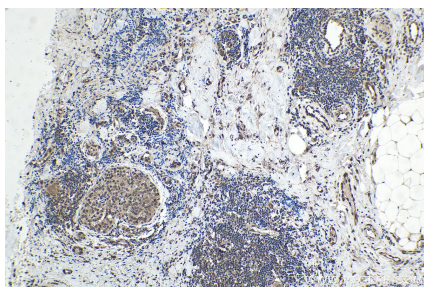
Synonyms

EFP, RING finger protein 147, RNF147, TRIM25, tripartite motif containing 25, Z147, Zinc finger protein 147, ZNF147

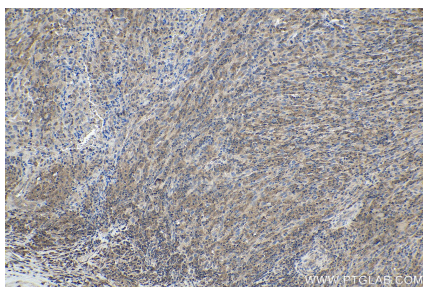
For technical support and original validation data for this product please contact:
T: 1 (888) 4PTGLAB (1-888-478-4522) (toll free in USA), or 1(312) 455-8498 (outside USA)
E: proteintech@ptglab.com
W: ptglab.com

This product is exclusively available under Proteintech Group brand and is not available to purchase from any other manufacturer.

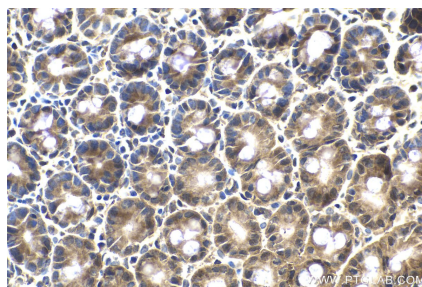
Selected Validation Data



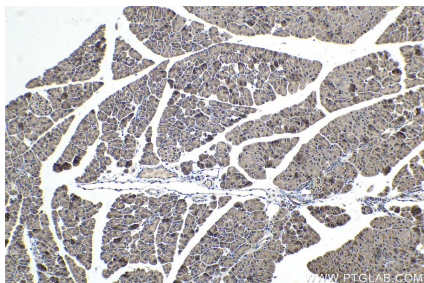
Immunohistochemical analysis of paraffin-embedded human thyroid cancer tissue slide using KHC1729 (TRIM25 IHC Kit).



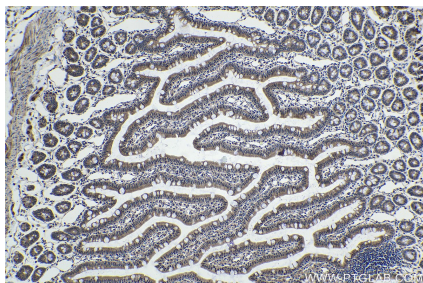
Immunohistochemical analysis of paraffin-embedded human skin cancer tissue slide using KHC1729 (TRIM25 IHC Kit).



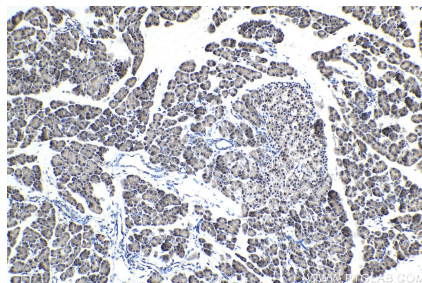
Immunohistochemical analysis of paraffin-embedded mouse small intestine tissue slide using KHC1729 (TRIM25 IHC Kit).



Immunohistochemical analysis of paraffin-embedded mouse pancreas tissue slide using KHC1729 (TRIM25 IHC Kit).



Immunohistochemical analysis of paraffin-embedded rat small intestine tissue slide using KHC1729 (TRIM25 IHC Kit).



Immunohistochemical analysis of paraffin-embedded rat pancreas tissue slide using KHC1729 (TRIM25 IHC Kit).