

IHC*easy* STAT4 Ready-To-Use IHC Kit

Catalog Number: **KHC1736**

General Information

Sample type:
FFPE tissue

Cited sample type:

Reactivity:
Human, Mouse, Rat

Cited Reactivity:

Assay type:
Immunohistochemistry

Primary antibody type:
Rabbit Polyclonal

Secondary antibody type:
Polymer-HRP-Goat anti-Rabbit

Kit Component

Component	Size	Concentration
Antigen Retrieval Buffer	100 mL	50×
Washing Buffer	100 mL ×2	20×
Blocking Buffer	5 mL	RTU
Primary Antibody	5 mL	RTU
Secondary Antibody	5 mL	RTU
Chromogen Component A	0.2 mL	RTU
Chromogen Component B	4 mL	RTU
Signal Enhancer	5 mL	RTU
Counter Staining Reagent	5 mL	RTU
Mounting Media	5 mL	RTU
Control Slide	1 slide (Optional)	FFPE
Datasheet	1 Copy	
Manual	1 Copy	

Storage Instructions

All the reagents are stored at 2-8°C. The kit is stable for 6 months from the date of receipt.

Background

The JAK/STAT pathway is an extensive signaling pathway downstream of cytokine receptors. STATs are cytosolic proteins with a common structure consisting of an N-terminal oligomerization domain, which favors formation of STAT dimers, followed by a DNA-binding domain and a C-terminal SRC homology-2 (SH2) domain, which is involved in association between STATs and receptors. Signal Transducer and Activator of Transcription 4 (STAT4) is a transcription factor that is activated by IL-12 signaling and promotes Th1-cell differentiation and IFN- γ production.

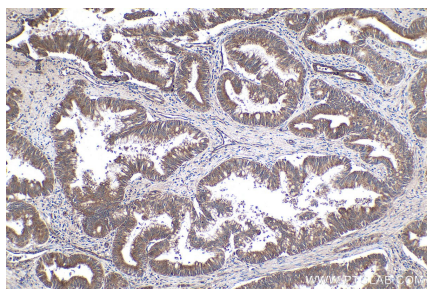
Synonyms

SLEB11, STAT4

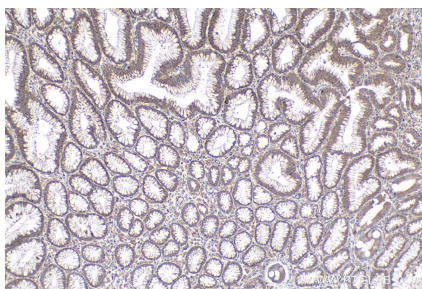
For technical support and original validation data for this product please contact:
T: 1 (888) 4PTGLAB (1-888-478-4522) (toll free in USA), or 1(312) 455-8498 (outside USA)
E: proteintech@ptglab.com
W: ptglab.com

This product is exclusively available under Proteintech Group brand and is not available to purchase from any other manufacturer.

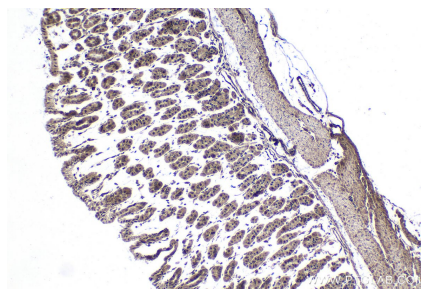
Selected Validation Data



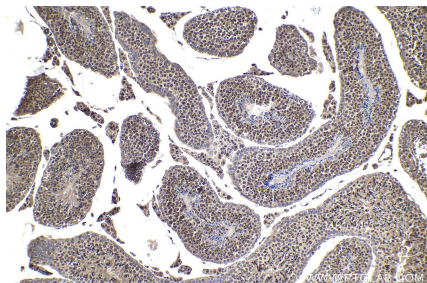
Immunohistochemical analysis of paraffin-embedded human pancreas cancer tissue slide using KHC1736 (STAT4 IHC Kit).



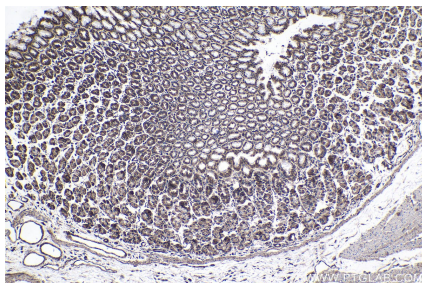
Immunohistochemical analysis of paraffin-embedded human stomach cancer tissue slide using KHC1736 (STAT4 IHC Kit).



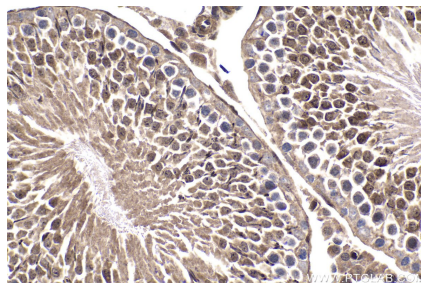
Immunohistochemical analysis of paraffin-embedded mouse stomach tissue slide using KHC1736 (STAT4 IHC Kit).



Immunohistochemical analysis of paraffin-embedded mouse testis tissue slide using KHC1736 (STAT4 IHC Kit).



Immunohistochemical analysis of paraffin-embedded rat stomach tissue slide using KHC1736 (STAT4 IHC Kit).



Immunohistochemical analysis of paraffin-embedded rat testis tissue slide using KHC1736 (STAT4 IHC Kit).