

IHC*easy* MMS19 Ready-To-Use IHC Kit

Catalog Number: **KHC1886**

General Information

Sample type:
FFPE tissue

Cited sample type:

Reactivity:
Human, Mouse, Rat

Cited Reactivity:

Assay type:
Immunohistochemistry

Primary antibody type:
Rabbit Polyclonal

Secondary antibody type:
Polymer-HRP-Goat anti-Rabbit

Kit Component

| Component | Size | Concentration |
|--------------------------|--------------------|---------------|
| Antigen Retrieval Buffer | 100 mL | 50× |
| Washing Buffer | 100 mL ×2 | 20× |
| Blocking Buffer | 5 mL | RTU |
| Primary Antibody | 5 mL | RTU |
| Secondary Antibody | 5 mL | RTU |
| Chromogen Component A | 0.2 mL | RTU |
| Chromogen Component B | 4 mL | RTU |
| Signal Enhancer | 5 mL | RTU |
| Counter Staining Reagent | 5 mL | RTU |
| Mounting Media | 5 mL | RTU |
| Control Slide | 1 slide (Optional) | FFPE |
| Datasheet | 1 Copy | |
| Manual | 1 Copy | |

Storage Instructions

All the reagents are stored at 2-8°C. The kit is stable for 6 months from the date of receipt.

Background

MMS19 plays a critical role in the biogenesis of multiple Fe-S proteins, which functions in genomic stability, RNA polymerase II function, and telomere length regulation. MMS19 has a alanine- and leucine-rich N terminus. It possible has a role in nucleotide excision repair(NER) and RNA polymerase II(POL II) transcription by interacting with ERCC2/XPB helicases, both subunits of NER-transcription factor TFIIH. Also MMS19 involves in the regulation of ER. It can function in chromosome segregation by acting as a part of the mitotic spindle-associated MMXD complex.

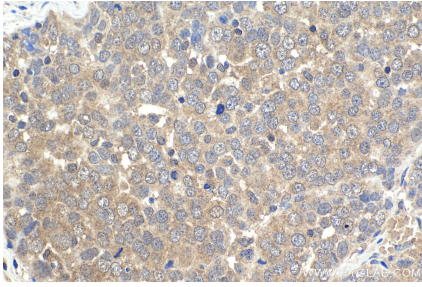
Synonyms

hMMS19, MET18, MET18 homolog, MMS19, MMS19 like protein, MMS19L

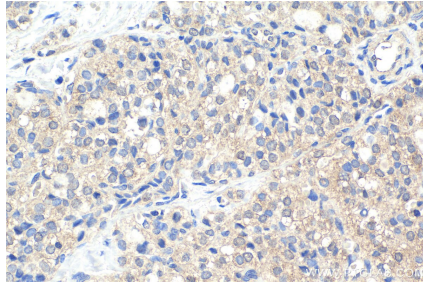
For technical support and original validation data for this product please contact:
T: 1 (888) 4PTGLAB (1-888-478-4522) (toll free in USA), or 1(312) 455-8498 (outside USA)
E: proteintech@ptglab.com
W: ptglab.com

This product is exclusively available under Proteintech Group brand and is not available to purchase from any other manufacturer.

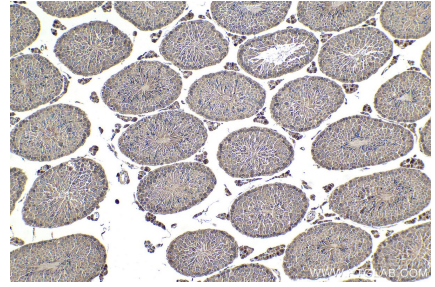
Selected Validation Data



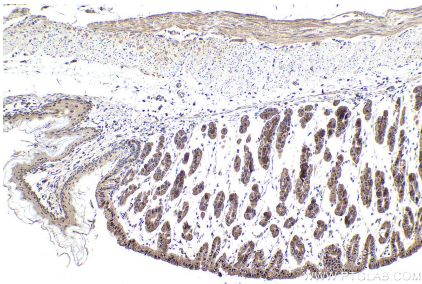
Immunohistochemical analysis of paraffin-embedded human ovary tumor tissue slide using KHC1886 (MMS19 IHC Kit).



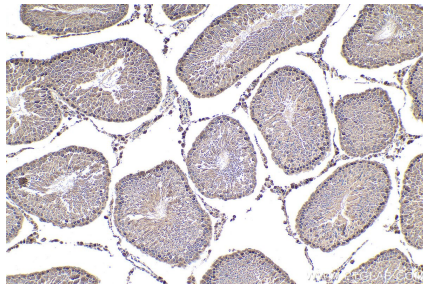
Immunohistochemical analysis of paraffin-embedded human thyroid cancer tissue slide using KHC1886 (MMS19 IHC Kit).



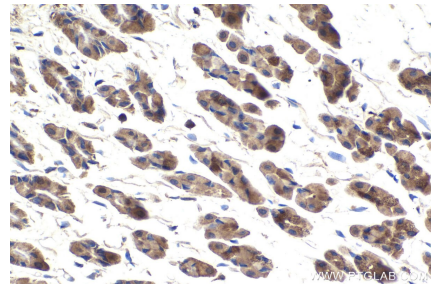
Immunohistochemical analysis of paraffin-embedded mouse testis tissue slide using KHC1886 (MMS19 IHC Kit).



Immunohistochemical analysis of paraffin-embedded mouse stomach tissue slide using KHC1886 (MMS19 IHC Kit).



Immunohistochemical analysis of paraffin-embedded rat testis tissue slide using KHC1886 (MMS19 IHC Kit).



Immunohistochemical analysis of paraffin-embedded rat stomach tissue slide using KHC1886 (MMS19 IHC Kit).