

IHC*easy* LITAF Ready-To-Use IHC Kit

Catalog Number: **KHC1896**

General Information

Sample type:
FFPE tissue

Cited sample type:

Reactivity:
Human, Mouse, Rat

Cited Reactivity:

Assay type:
Immunohistochemistry

Primary antibody type:
Rabbit Polyclonal

Secondary antibody type:
Polymer-HRP-Goat anti-Rabbit

Kit Component

Component	Size	Concentration
Antigen Retrieval Buffer	100 mL	50×
Washing Buffer	100 mL ×2	20×
Blocking Buffer	5 mL	RTU
Primary Antibody	5 mL	RTU
Secondary Antibody	5 mL	RTU
Chromogen Component A	0.2 mL	RTU
Chromogen Component B	4 mL	RTU
Signal Enhancer	5 mL	RTU
Counter Staining Reagent	5 mL	RTU
Mounting Media	5 mL	RTU
Control Slide	1 slide (Optional)	FFPE
Datasheet	1 Copy	
Manual	1 Copy	

Storage Instructions

All the reagents are stored at 2-8°C. The kit is stable for 6 months from the date of receipt.

Background

Lipopolysaccharide-induced TNF factor (LITAF) is a transcription factor that identified as a regulator of TNF-alpha gene expression. It may has a role in protein degradation pathways and in tumor necrosis factor alpha (TNF-alpha) gene expression. Also it may regulate the expression of the CCL2/MCP-1 chemokine through NFkB1. Defects in LITAF may be involved in extramammary Paget disease (EMPD) carcinogenesis.

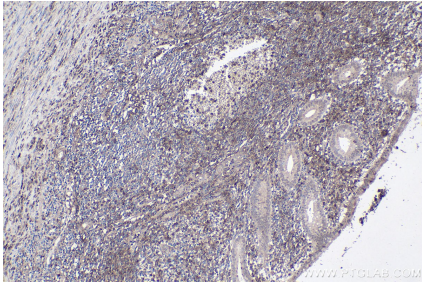
Synonyms

LITAF, LPS induced TNF alpha factor, p53 induced gene 7 protein, PIG7, SIMPLE, TP53I7

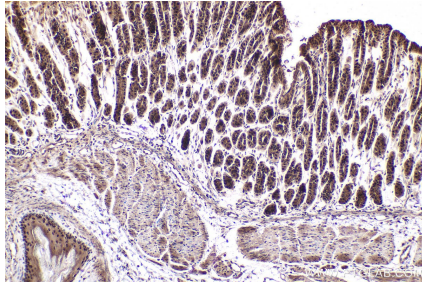
For technical support and original validation data for this product please contact:
T: 1 (888) 4PTGLAB (1-888-478-4522) (toll free in USA), or 1(312) 455-8498 (outside USA)
E: proteintech@ptglab.com
W: ptglab.com

This product is exclusively available under Proteintech Group brand and is not available to purchase from any other manufacturer.

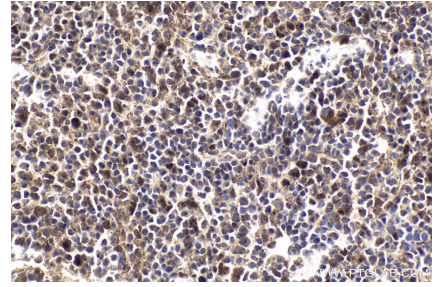
Selected Validation Data



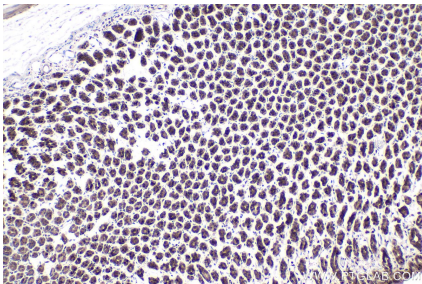
Immunohistochemical analysis of paraffin-embedded human appendicitis tissue slide using KHC1896 (LITAF IHC Kit).



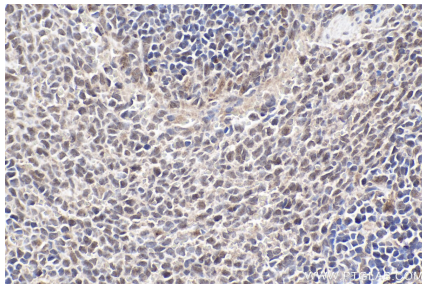
Immunohistochemical analysis of paraffin-embedded mouse stomach tissue slide using KHC1896 (LITAF IHC Kit).



Immunohistochemical analysis of paraffin-embedded mouse spleen tissue slide using KHC1896 (LITAF IHC Kit).



Immunohistochemical analysis of paraffin-embedded rat stomach tissue slide using KHC1896 (LITAF IHC Kit).



Immunohistochemical analysis of paraffin-embedded rat spleen tissue slide using KHC1896 (LITAF IHC Kit).