

IHC*easy* ING2 Ready-To-Use IHC Kit

Catalog Number: **KHC1922**

General Information

Sample type:
FFPE tissue
Cited sample type:
Reactivity:
Human, Mouse
Cited Reactivity:

Assay type:
Immunohistochemistry
Primary antibody type:
Rabbit Polyclonal
Secondary antibody type:
Polymer-HRP-Goat anti-Rabbit

Kit Component

Component	Size	Concentration
Antigen Retrieval Buffer	100 mL	50×
Washing Buffer	100 mL ×2	20×
Blocking Buffer	5 mL	RTU
Primary Antibody	5 mL	RTU
Secondary Antibody	5 mL	RTU
Chromogen Component A	0.2 mL	RTU
Chromogen Component B	4 mL	RTU
Signal Enhancer	5 mL	RTU
Counter Staining Reagent	5 mL	RTU
Mounting Media	5 mL	RTU
Control Slide	1 slide (Optional)	FFPE
Datasheet	1 Copy	
Manual	1 Copy	

Storage Instructions

All the reagents are stored at 2-8°C. The kit is stable for 6 months from the date of receipt.

Background

ING2, also named as ING1L, belongs to the ING family and contains a PHD-type zinc finger. It is induced by the DNA-damaging agent neocarzinostatin. As a candidate tumor suppressor, ING2 seems to be involved in p53/TP53 activation and p53/TP53-dependent apoptotic pathways, probably by enhancing acetylation of p53/TP53. It is a component of a mSin3A-like corepressor complex, which is probably involved in deacetylation of nucleosomal histones. Recent finding reported that ING2 regulates muscle differentiation by regulating chromatin remodeling program.

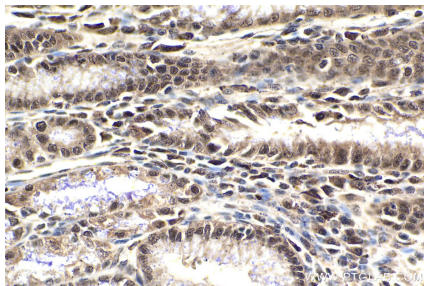
Synonyms

p33ING2, p32, Inhibitor of growth protein 2, Inhibitor of growth 1-like protein, ING1Lp

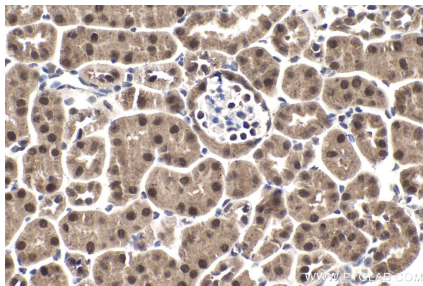
For technical support and original validation data for this product please contact:
T: 1 (888) 4PTGLAB (1-888-478-4522) (toll free in USA), or 1(312) 455-8498 (outside USA)
E: proteintech@ptglab.com
W: ptglab.com

This product is exclusively available under Proteintech Group brand and is not available to purchase from any other manufacturer.

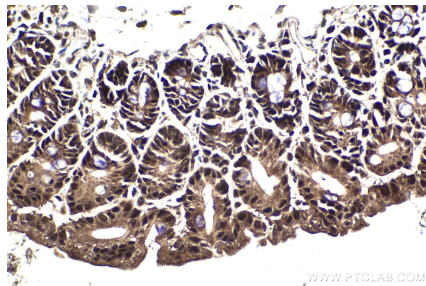
Selected Validation Data



Immunohistochemical analysis of paraffin-embedded human stomach cancer tissue slide using KHC1922 (ING2 IHC Kit).



Immunohistochemical analysis of paraffin-embedded mouse kidney tissue slide using KHC1922 (ING2 IHC Kit).



Immunohistochemical analysis of paraffin-embedded mouse intestine tissue slide using KHC1922 (ING2 IHC Kit).