

IHC*easy* HIPK2 Ready-To-Use IHC Kit

Catalog Number: **KHC1929**

General Information

Sample type:
FFPE tissue

Cited sample type:

Reactivity:
Human, Mouse, Rat

Cited Reactivity:

Assay type:
Immunohistochemistry

Primary antibody type:
Rabbit Polyclonal

Secondary antibody type:
Polymer-HRP-Goat anti-Rabbit

Kit Component

Component	Size	Concentration
Antigen Retrieval Buffer	100 mL	50×
Washing Buffer	100 mL ×2	20×
Blocking Buffer	5 mL	RTU
Primary Antibody	5 mL	RTU
Secondary Antibody	5 mL	RTU
Chromogen Component A	0.2 mL	RTU
Chromogen Component B	4 mL	RTU
Signal Enhancer	5 mL	RTU
Counter Staining Reagent	5 mL	RTU
Mounting Media	5 mL	RTU
Control Slide	1 slide (Optional)	FFPE
Datasheet	1 Copy	
Manual	1 Copy	

Storage Instructions

All the reagents are stored at 2-8°C. The kit is stable for 6 months from the date of receipt.

Background

HIPK2 is a serine/threonine kinase participating in transcriptional regulation, growth control, and apoptosis. The kinase contributes to the regulation of remarkably diverse pathways such as p53 activation or Wnt signaling. There is very low levels of HIPK2 protein expression in several thyroid tumors and the combination of HIPK2 and Gal-3, would be helpful in ameliorating the preoperative recognition of thyroid cancer. HIPK2 may represent a new tumour suppressor gene for these types of cancers and may constitute a new potential promising diagnostic marker and therapeutic target.

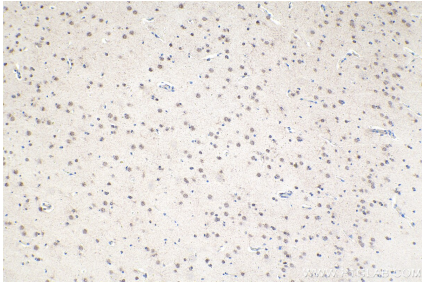
Synonyms

hHIPk2, HIPK2, PRO0593

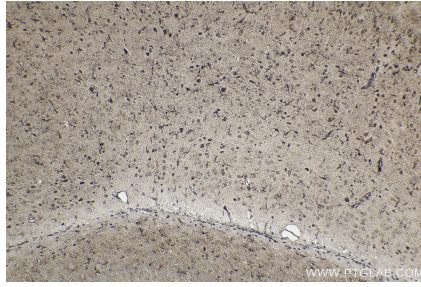
For technical support and original validation data for this product please contact:
T: 1 (888) 4PTGLAB (1-888-478-4522) (toll free in USA), or 1(312) 455-8498 (outside USA)
E: proteintech@ptglab.com
W: ptglab.com

This product is exclusively available under Proteintech Group brand and is not available to purchase from any other manufacturer.

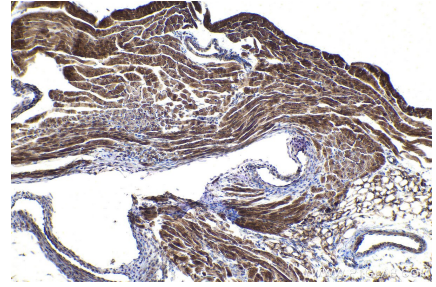
Selected Validation Data



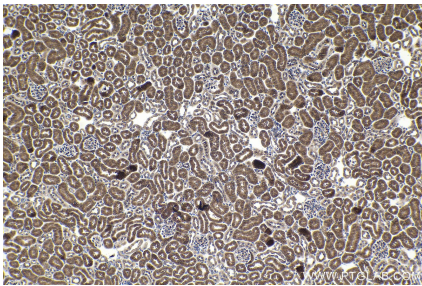
Immunohistochemical analysis of paraffin-embedded human gliomas tissue slide using KHC1929 (HIPK2 IHC Kit).



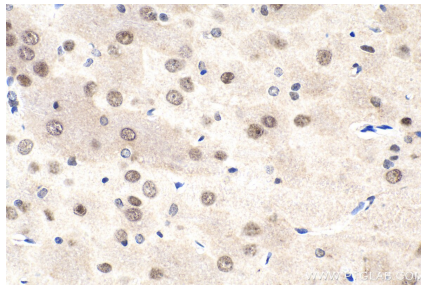
Immunohistochemical analysis of paraffin-embedded mouse brain tissue slide using KHC1929 (HIPK2 IHC Kit).



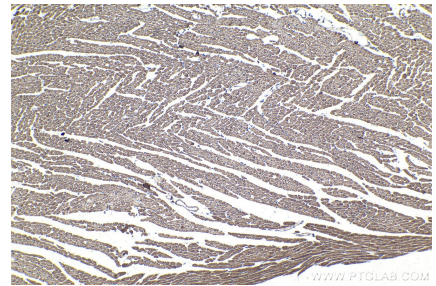
Immunohistochemical analysis of paraffin-embedded mouse heart tissue slide using KHC1929 (HIPK2 IHC Kit).



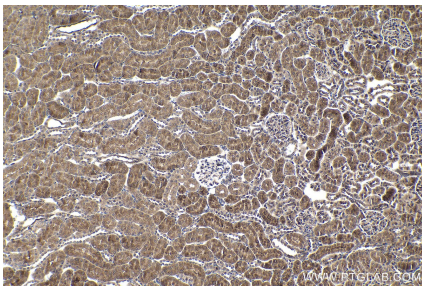
Immunohistochemical analysis of paraffin-embedded mouse kidney tissue slide using KHC1929 (HIPK2 IHC Kit).



Immunohistochemical analysis of paraffin-embedded rat brain tissue slide using KHC1929 (HIPK2 IHC Kit).



Immunohistochemical analysis of paraffin-embedded rat heart tissue slide using KHC1929 (HIPK2 IHC Kit).



Immunohistochemical analysis of paraffin-embedded rat kidney tissue slide using KHC1929 (HIPK2 IHC Kit).