

IHC*easy* BRD7 Ready-To-Use IHC Kit

Catalog Number: **KHC1955**

General Information

Sample type:
FFPE tissue

Cited sample type:

Reactivity:
Human, Mouse, Rat

Cited Reactivity:

Assay type:
Immunohistochemistry

Primary antibody type:
Rabbit Polyclonal

Secondary antibody type:
Polymer-HRP-Goat anti-Rabbit

Kit Component

Component	Size	Concentration
Antigen Retrieval Buffer	100 mL	50×
Washing Buffer	100 mL ×2	20×
Blocking Buffer	5 mL	RTU
Primary Antibody	5 mL	RTU
Secondary Antibody	5 mL	RTU
Chromogen Component A	0.2 mL	RTU
Chromogen Component B	4 mL	RTU
Signal Enhancer	5 mL	RTU
Counter Staining Reagent	5 mL	RTU
Mounting Media	5 mL	RTU
Control Slide	1 slide (Optional)	FFPE
Datasheet	1 Copy	
Manual	1 Copy	

Storage Instructions

All the reagents are stored at 2-8°C. The kit is stable for 6 months from the date of receipt.

Background

BRD7 (bromodomain containing 7), is a subunit of poly-bromo-associated BRG1-associated factor (PBAF)-specific Swi/Snf chromatin remodeling complexes. BRD7 is proposed as a tumor suppressor protein, since its identification as an important component of both functional p53 and BRCA1 (breast cancer 1, early onset) pathways. BRD7 could down-regulate the GSK3beta phosphotransferase activity as dephosphorylation of GSK3B at 'Tyr-216', thus activate the Wnt signaling pathway in a DVL1-dependent manner.

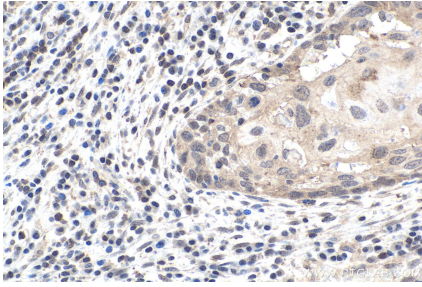
Synonyms

75 kDa bromodomain protein, BP75, BRD7, bromodomain containing 7, CELTIX1, NAG4, Protein CELTIX 1

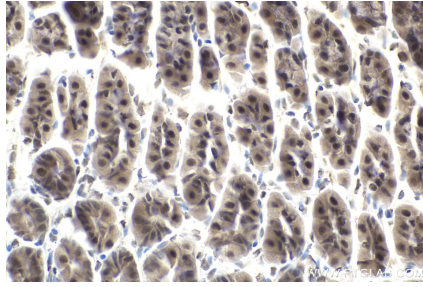
For technical support and original validation data for this product please contact:
T: 1 (888) 4PTGLAB (1-888-478-4522) (toll free in USA), or 1(312) 455-8498 (outside USA)
E: proteintech@ptglab.com
W: ptglab.com

This product is exclusively available under Proteintech Group brand and is not available to purchase from any other manufacturer.

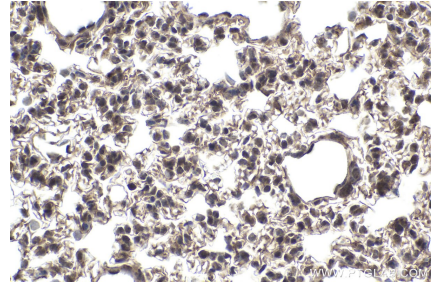
Selected Validation Data



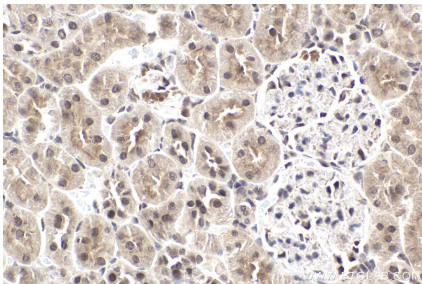
Immunohistochemical analysis of paraffin-embedded human cervical cancer tissue slide using KHC1955 (BRD7 IHC Kit).



Immunohistochemical analysis of paraffin-embedded mouse stomach tissue slide using KHC1955 (BRD7 IHC Kit).



Immunohistochemical analysis of paraffin-embedded mouse lung tissue slide using KHC1955 (BRD7 IHC Kit).



Immunohistochemical analysis of paraffin-embedded rat kidney tissue slide using KHC1955 (BRD7 IHC Kit).