

IHC*easy* DCP1A Ready-To-Use IHC Kit

Catalog Number: **KHC1956**

General Information

Sample type:
FFPE tissue

Cited sample type:

Reactivity:
Human, Mouse, Rat

Cited Reactivity:

Assay type:
Immunohistochemistry

Primary antibody type:
Rabbit Polyclonal

Secondary antibody type:
Polymer-HRP-Goat anti-Rabbit

Kit Component

Component	Size	Concentration
Antigen Retrieval Buffer	100 mL	50×
Washing Buffer	100 mL ×2	20×
Blocking Buffer	5 mL	RTU
Primary Antibody	5 mL	RTU
Secondary Antibody	5 mL	RTU
Chromogen Component A	0.2 mL	RTU
Chromogen Component B	4 mL	RTU
Signal Enhancer	5 mL	RTU
Counter Staining Reagent	5 mL	RTU
Mounting Media	5 mL	RTU
Control Slide	1 slide (Optional)	FFPE
Datasheet	1 Copy	
Manual	1 Copy	

Storage Instructions

All the reagents are stored at 2-8°C. The kit is stable for 6 months from the date of receipt.

Background

DCP1 decapping enzyme homolog A (*S. cerevisiae*), known as mRNA-decapping enzyme 1A (DCP1A), is necessary for the degradation of mRNAs, both in normal mRNA turnover and in nonsense-mediated mRNA decay. Removes the 7-methyl guanine cap structure from mRNA molecules, yielding a 5'-phosphorylated mRNA fragment and 7m-GDP. Contributes to the transactivation of target genes after stimulation by TGFB1.

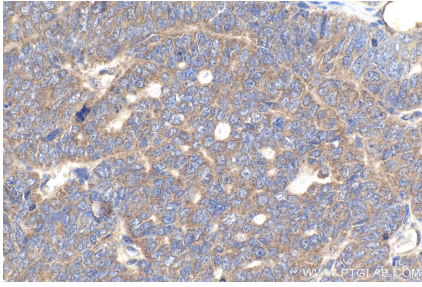
Synonyms

DCP1A, HSA275986, mRNA decapping enzyme 1A, Nbla00360, SMAD4IP1, SMIF, Transcription factor SMIF

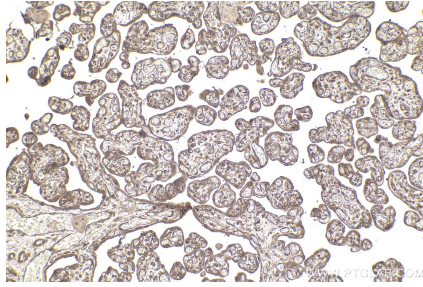
For technical support and original validation data for this product please contact:
T: 1 (888) 4PTGLAB (1-888-478-4522) (toll free in USA), or 1(312) 455-8498 (outside USA)
E: proteintech@ptglab.com
W: ptglab.com

This product is exclusively available under Proteintech Group brand and is not available to purchase from any other manufacturer.

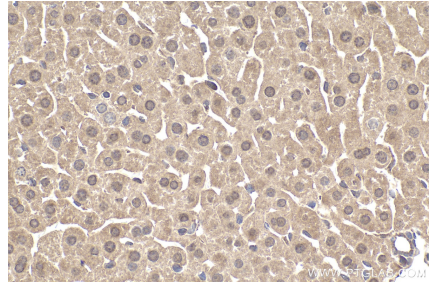
Selected Validation Data



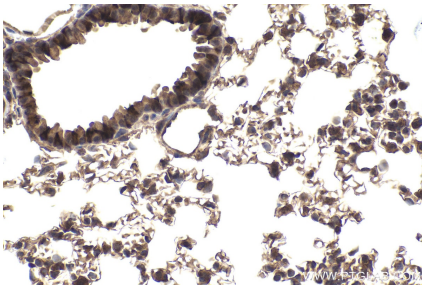
Immunohistochemical analysis of paraffin-embedded human ovary tumor tissue slide using KHC1956 (DCP1A IHC Kit).



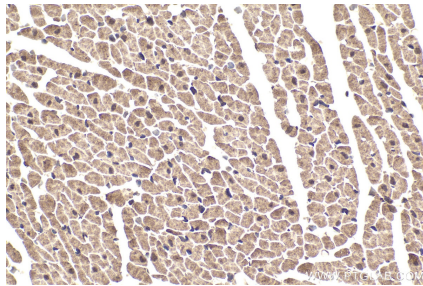
Immunohistochemical analysis of paraffin-embedded human placenta tissue slide using KHC1956 (DCP1A IHC Kit).



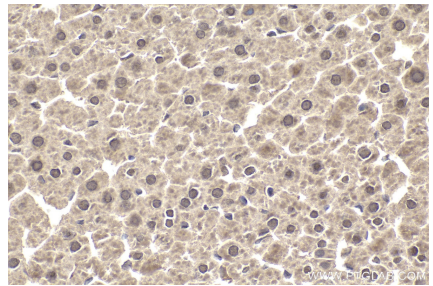
Immunohistochemical analysis of paraffin-embedded mouse liver tissue slide using KHC1956 (DCP1A IHC Kit).



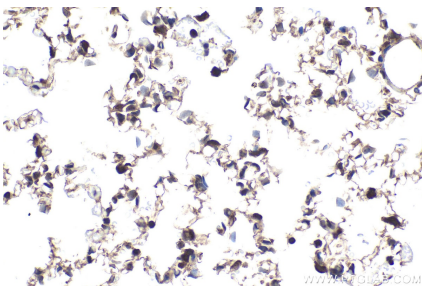
Immunohistochemical analysis of paraffin-embedded mouse lung tissue slide using KHC1956 (DCP1A IHC Kit).



Immunohistochemical analysis of paraffin-embedded rat heart tissue slide using KHC1956 (DCP1A IHC Kit).



Immunohistochemical analysis of paraffin-embedded rat liver tissue slide using KHC1956 (DCP1A IHC Kit).



Immunohistochemical analysis of paraffin-embedded rat lung tissue slide using KHC1956 (DCP1A IHC Kit).