

# IHC*easy* MKKS Ready-To-Use IHC Kit

Catalog Number: **KHC1957**

## General Information

Sample type:  
FFPE tissue  
Cited sample type:  
Reactivity:  
Human, Mouse, Rat  
Cited Reactivity:

Assay type:  
Immunohistochemistry  
Primary antibody type:  
Rabbit Polyclonal  
Secondary antibody type:  
Polymer-HRP-Goat anti-Rabbit

## Kit Component

Component	Size	Concentration
Antigen Retrieval Buffer	100 mL	50×
Washing Buffer	100 mL ×2	20×
Blocking Buffer	5 mL	RTU
Primary Antibody	5 mL	RTU
Secondary Antibody	5 mL	RTU
Chromogen Component A	0.2 mL	RTU
Chromogen Component B	4 mL	RTU
Signal Enhancer	5 mL	RTU
Counter Staining Reagent	5 mL	RTU
Mounting Media	5 mL	RTU
Control Slide	1 slide (Optional)	FFPE
Datasheet	1 Copy	
Manual	1 Copy	

## Storage Instructions

All the reagents are stored at 2-8°C. The kit is stable for 6 months from the date of receipt.

## Background

MKKS also known as BBS6 is a probable chaperone given to the amino acid similarity to the chaperonin family of proteins and may play a role in protein processing in limb, cardiac and reproductive system development. The mutations in BBS6 have been linked to Bardet-Biedl syndrome (BBS) which is a genetically heterogeneous, autosomal recessive disorder characterized by usually severe pigmentary retinopathy, early onset obesity, polydactyly, hypogenitalism, renal malformation and mental retardation. It may also get involved in cellular organization processes, in particular relating to ciliary/flagellar and centrosomal activities.

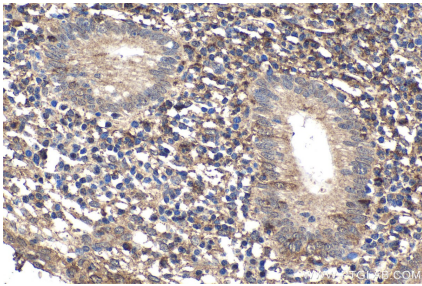
## Synonyms

MKS, McKusick-Kaufman/Bardet-Biedl syndromes putative chaperonin, KMS, HMCS, BBS6

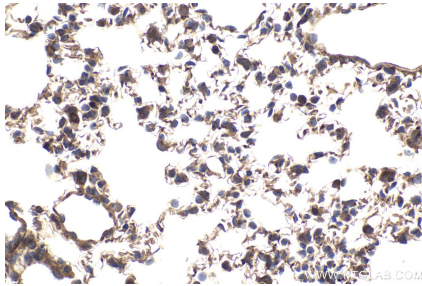
For technical support and original validation data for this product please contact:  
T: 1 (888) 4PTGLAB (1-888-478-4522) (toll free in USA), or 1(312) 455-8498 (outside USA)  
E: [proteintech@ptglab.com](mailto:proteintech@ptglab.com)  
W: [ptglab.com](http://ptglab.com)

This product is exclusively available under Proteintech Group brand and is not available to purchase from any other manufacturer.

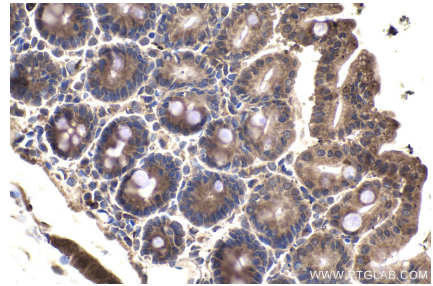
## Selected Validation Data



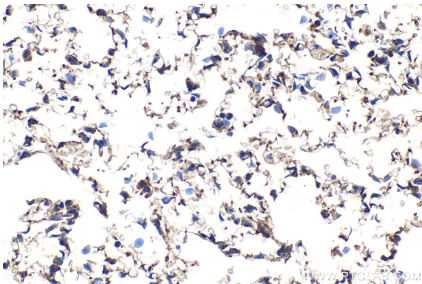
Immunohistochemical analysis of paraffin-embedded human appendicitis tissue slide using KHC1957 (MKKS IHC Kit).



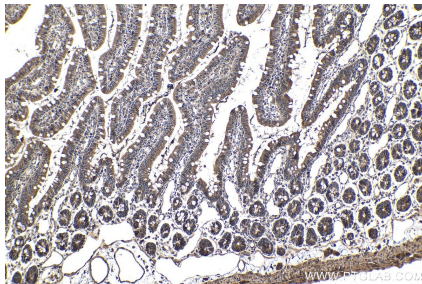
Immunohistochemical analysis of paraffin-embedded mouse lung tissue slide using KHC1957 (MKKS IHC Kit).



Immunohistochemical analysis of paraffin-embedded mouse intestine tissue slide using KHC1957 (MKKS IHC Kit).



Immunohistochemical analysis of paraffin-embedded rat lung tissue slide using KHC1957 (MKKS IHC Kit).



Immunohistochemical analysis of paraffin-embedded rat small intestine tissue slide using KHC1957 (MKKS IHC Kit).