

IHC*easy* HIF1AN Ready-To-Use IHC Kit

Catalog Number: **KHC1968**

General Information

Sample type:
FFPE tissue

Cited sample type:

Reactivity:
Human, Mouse

Cited Reactivity:

Assay type:
Immunohistochemistry

Primary antibody type:
Rabbit Polyclonal

Secondary antibody type:
Polymer-HRP-Goat anti-Rabbit

Kit Component

Component	Size	Concentration
Antigen Retrieval Buffer	100 mL	50×
Washing Buffer	100 mL ×2	20×
Blocking Buffer	5 mL	RTU
Primary Antibody	5 mL	RTU
Secondary Antibody	5 mL	RTU
Chromogen Component A	0.2 mL	RTU
Chromogen Component B	4 mL	RTU
Signal Enhancer	5 mL	RTU
Counter Staining Reagent	5 mL	RTU
Mounting Media	5 mL	RTU
Control Slide	1 slide (Optional)	FFPE
Datasheet	1 Copy	
Manual	1 Copy	

Storage Instructions

All the reagents are stored at 2-8°C. The kit is stable for 6 months from the date of receipt.

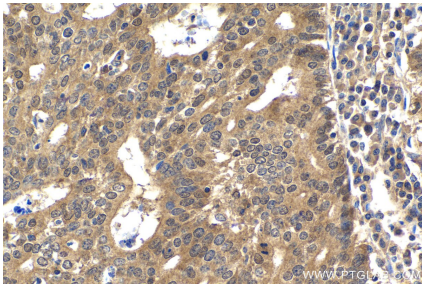
Background

HIF1AN (Hypoxia-inducible factor 1-alpha inhibitor) is also named FIH1. It is identified as a molecular oxygen-dependent dioxygenase that blunts the transcriptional activity of HIF and has also been implicated in HIF-dependent and -independent hypoxia responses. Structural studies indicate that an FIH-1 homodimer forms in solution and is essential for FIH-1 activity.

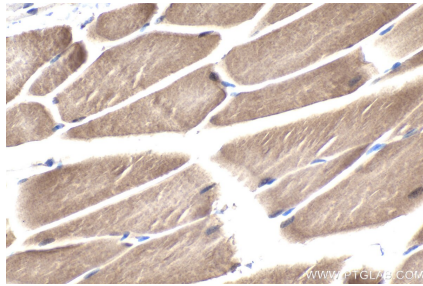
Synonyms

Factor inhibiting HIF 1, FIH 1, FIH1, HIF1AN

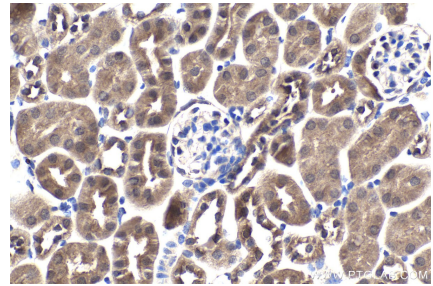
Selected Validation Data



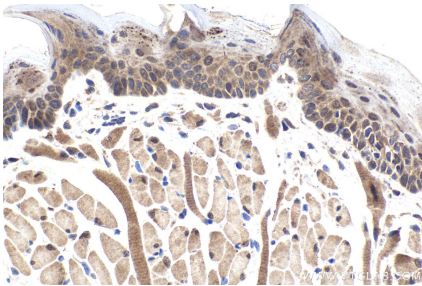
Immunohistochemical analysis of paraffin-embedded human endometrial cancer tissue slide using KHC1968 (HIF1AN IHC Kit).



Immunohistochemical analysis of paraffin-embedded mouse skeletal muscle tissue slide using KHC1968 (HIF1AN IHC Kit).



Immunohistochemical analysis of paraffin-embedded mouse kidney tissue slide using KHC1968 (HIF1AN IHC Kit).



Immunohistochemical analysis of paraffin-embedded mouse tongue tissue slide using KHC1968 (HIF1AN IHC Kit).