

IHC*easy* DDX20 Ready-To-Use IHC Kit

Catalog Number: **KHC1983**

General Information

Sample type:
FFPE tissue

Cited sample type:

Reactivity:
Human, Mouse, Rat

Cited Reactivity:

Assay type:
Immunohistochemistry

Primary antibody type:
Rabbit Polyclonal

Secondary antibody type:
Polymer-HRP-Goat anti-Rabbit

Kit Component

Component	Size	Concentration
Antigen Retrieval Buffer	100 mL	50×
Washing Buffer	100 mL ×2	20×
Blocking Buffer	5 mL	RTU
Primary Antibody	5 mL	RTU
Secondary Antibody	5 mL	RTU
Chromogen Component A	0.2 mL	RTU
Chromogen Component B	4 mL	RTU
Signal Enhancer	5 mL	RTU
Counter Staining Reagent	5 mL	RTU
Mounting Media	5 mL	RTU
Control Slide	1 slide (Optional)	FFPE
Datasheet	1 Copy	
Manual	1 Copy	

Storage Instructions

All the reagents are stored at 2-8°C. The kit is stable for 6 months from the date of receipt.

Background

DEAD (Asp-Glu-Ala-Asp) box polypeptide 20 (DDX20), also known as DP103 or Gemin3, is a member of the DEAD box protein family expressed ubiquitously. DEAD family proteins use energy from ATP hydrolysis for RNA chaperoning and RNPase activity. As a core member of the survival motor neuron (SMN) complex, DDX20 participate in small nuclear ribonucleoprotein (snRNP) biogenesis. Second, DDX20 have direct roles in gene expression in view of its implication in transcription and post-transcriptional gene silencing. Addition, the false expression of DDX20 could have deleterious effects on cellular homeostasis thus leading to cancer development and progression. Anymore, DDX20 could be identified as a biomarker and metastasis-driving oncogene of human breast cancer.

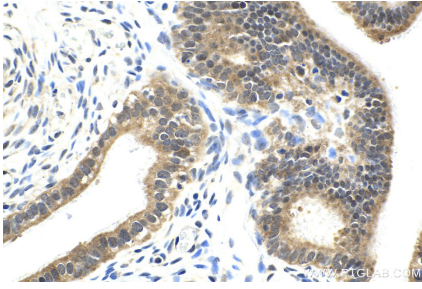
Synonyms

Component of gems 3, DDX20, DEAD box protein 20, DEAD box protein DP 103, DP103, Gemin 3, GEMIN3

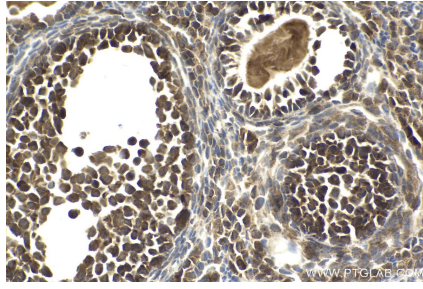
For technical support and original validation data for this product please contact:
T: 1 (888) 4PTGLAB (1-888-478-4522) (toll free in USA), or 1(312) 455-8498 (outside USA)
E: proteintech@ptglab.com
W: ptglab.com

This product is exclusively available under Proteintech Group brand and is not available to purchase from any other manufacturer.

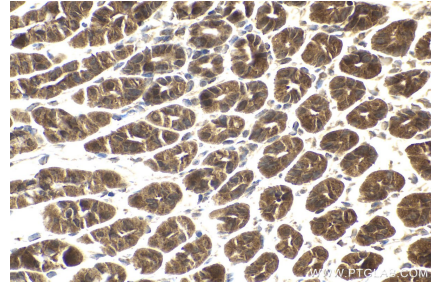
Selected Validation Data



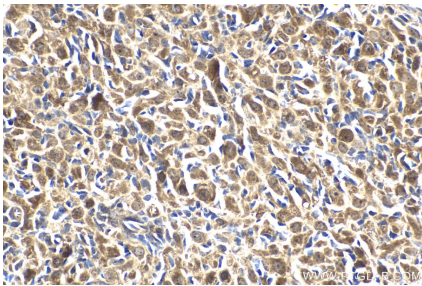
Immunohistochemical analysis of paraffin-embedded human ovary tumor tissue slide using KHC1983 (DDX20 IHC Kit).



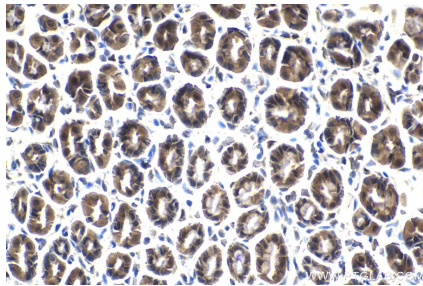
Immunohistochemical analysis of paraffin-embedded mouse ovary tissue slide using KHC1983 (DDX20 IHC Kit).



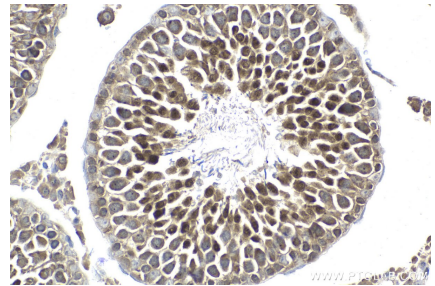
Immunohistochemical analysis of paraffin-embedded mouse stomach tissue slide using KHC1983 (DDX20 IHC Kit).



Immunohistochemical analysis of paraffin-embedded rat ovary tissue slide using KHC1983 (DDX20 IHC Kit).



Immunohistochemical analysis of paraffin-embedded rat stomach tissue slide using KHC1983 (DDX20 IHC Kit).



Immunohistochemical analysis of paraffin-embedded rat testis tissue slide using KHC1983 (DDX20 IHC Kit).