

IHC*easy* TRMT112/HSPC152 Ready-To-Use IHC Kit

Catalog Number: **KHC1986**

General Information

Sample type:
FFPE tissue
Cited sample type:
Reactivity:
Human
Cited Reactivity:

Assay type:
Immunohistochemistry
Primary antibody type:
Rabbit Polyclonal
Secondary antibody type:
Polymer-HRP-Goat anti-Rabbit

Kit Component

Component	Size	Concentration
Antigen Retrieval Buffer	100 mL	50×
Washing Buffer	100 mL ×2	20×
Blocking Buffer	5 mL	RTU
Primary Antibody	5 mL	RTU
Secondary Antibody	5 mL	RTU
Chromogen Component A	0.2 mL	RTU
Chromogen Component B	4 mL	RTU
Signal Enhancer	5 mL	RTU
Counter Staining Reagent	5 mL	RTU
Mounting Media	5 mL	RTU
Control Slide	1 slide (Optional)	FFPE
Datasheet	1 Copy	
Manual	1 Copy	

Storage Instructions

All the reagents are stored at 2-8°C. The kit is stable for 6 months from the date of receipt.

Background

TRMT112 is a small evolutionarily conserved protein that acts as a co-factor and activator for different MTases involved in rRNA, tRNA and protein methylation. The TRMT112 interaction with 18S rRNA MTases WBSCR22 (BUD23, MERM1) and METTL5 is required for their metabolic stability and enzymatic activity in cells.

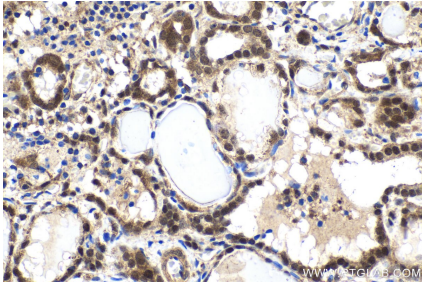
Synonyms

HSPC152, HSPC170, hypothetical protein HSPC152, TRM112 like protein, TRMT112

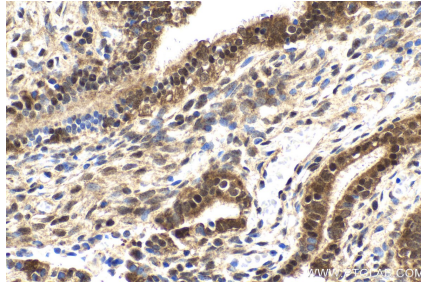
For technical support and original validation data for this product please contact:
T: 1 (888) 4PTGLAB (1-888-478-4522) (toll free in USA), or 1(312) 455-8498 (outside USA)
E: proteintech@ptglab.com
W: ptglab.com

This product is exclusively available under Proteintech Group brand and is not available to purchase from any other manufacturer.

Selected Validation Data



Immunohistochemical analysis of paraffin-embedded human thyroid cancer tissue slide using KHC1986 (TRMT112/HSPC152 IHC Kit).



Immunohistochemical analysis of paraffin-embedded human ovary tumor tissue slide using KHC1986 (TRMT112/HSPC152 IHC Kit).