

# IHC*easy* SIX4 Ready-To-Use IHC Kit

Catalog Number: **KHC1988**

## General Information

**Sample type:**  
FFPE tissue

**Cited sample type:**

**Reactivity:**  
Human, Mouse

**Cited Reactivity:**

**Assay type:**  
Immunohistochemistry

**Primary antibody type:**  
Rabbit Polyclonal

**Secondary antibody type:**  
Polymer-HRP-Goat anti-Rabbit

## Kit Component

Component	Size	Concentration
Antigen Retrieval Buffer	100 mL	50×
Washing Buffer	100 mL × 2	20×
Blocking Buffer	5 mL	RTU
Primary Antibody	5 mL	RTU
Secondary Antibody	5 mL	RTU
Chromogen Component A	0.2 mL	RTU
Chromogen Component B	4 mL	RTU
Signal Enhancer	5 mL	RTU
Counter Staining Reagent	5 mL	RTU
Mounting Media	5 mL	RTU
Control Slide	1 slide (Optional)	FFPE
Datasheet	1 Copy	
Manual	1 Copy	

## Storage Instructions

All the reagents are stored at 2-8°C. The kit is stable for 6 months from the date of receipt.

## Background

The Six (sine oculis) proteins are a family of homeodomain transcription factors that share a conserved DNA-binding domain and are human homologs of the *Drosophila* sine oculis (so) protein. SIX homeobox 4 (SIX4), also known as AREC3, belongs to the Six family. Six4 contains one Six domain (which functions as a homeobox DNA-binding motif) and shares 90% sequence similarity with its mouse counterpart, suggesting that both proteins have similar DNA-binding properties. SIX4 is thought to be involved in neurogenesis, myogenesis, and development of other organs, based on its specific expression in certain neuronal cells of the developing embryo and in adult skeletal muscles.

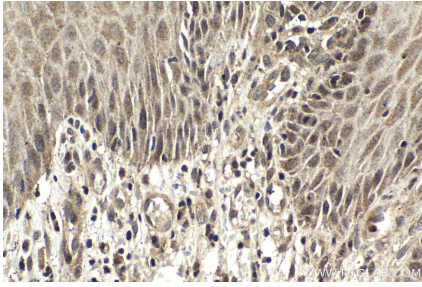
## Synonyms

AREC3, Homeobox protein SIX4, Sine oculis homeobox homolog 4, SIX homeobox 4, SIX4

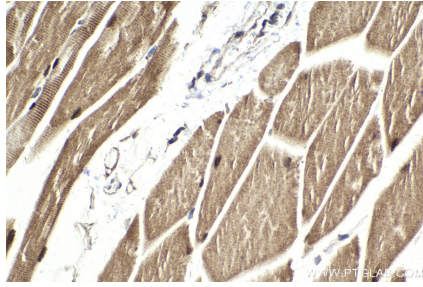
For technical support and original validation data for this product please contact:  
T: 1 (888) 4PTGLAB (1-888-478-4522) (toll free in USA), or 1(312) 455-8498 (outside USA) E: [proteintech@ptglab.com](mailto:proteintech@ptglab.com) W: [ptglab.com](http://ptglab.com)

This product is exclusively available under Proteintech Group brand and is not available to purchase from any other manufacturer.

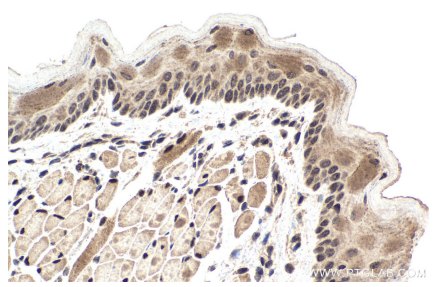
## Selected Validation Data



Immunohistochemical analysis of paraffin-embedded human skin cancer tissue slide using KHC1988 (SIX4 IHC Kit).



Immunohistochemical analysis of paraffin-embedded mouse skeletal muscle tissue slide using KHC1988 (SIX4 IHC Kit).



Immunohistochemical analysis of paraffin-embedded mouse tongue tissue slide using KHC1988 (SIX4 IHC Kit).