

IHC*easy* GMEB2 Ready-To-Use IHC Kit

Catalog Number: **KHC1990**

General Information

Sample type:
FFPE tissue

Cited sample type:

Reactivity:
Human, Mouse, Rat

Cited Reactivity:

Assay type:
Immunohistochemistry

Primary antibody type:
Rabbit Polyclonal

Secondary antibody type:
Polymer-HRP-Goat anti-Rabbit

Kit Component

Component	Size	Concentration
Antigen Retrieval Buffer	100 mL	50×
Washing Buffer	100 mL ×2	20×
Blocking Buffer	5 mL	RTU
Primary Antibody	5 mL	RTU
Secondary Antibody	5 mL	RTU
Chromogen Component A	0.2 mL	RTU
Chromogen Component B	4 mL	RTU
Signal Enhancer	5 mL	RTU
Counter Staining Reagent	5 mL	RTU
Mounting Media	5 mL	RTU
Control Slide	1 slide (Optional)	FFPE
Datasheet	1 Copy	
Manual	1 Copy	

Storage Instructions

All the reagents are stored at 2-8°C. The kit is stable for 6 months from the date of receipt.

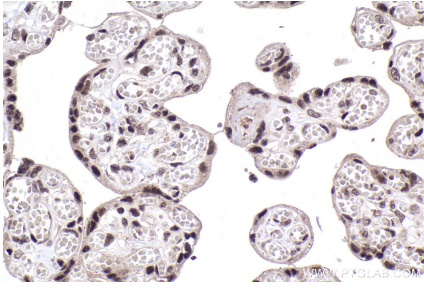
Background

GMEB2, also named as Glucocorticoid modulatory element-binding protein 2, is a 530 amino acid protein, which is expressed in peripheral blood lymphocytes and fetal liver. GMEB2 as a trans-acting factor that binds to glucocorticoid modulatory elements (GME) present in the TAT (tyrosine aminotransferase) promoter and increases sensitivity to low concentrations of glucocorticoids.

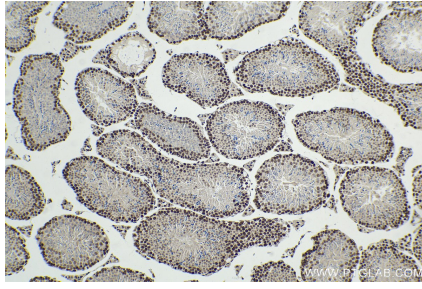
Synonyms

DNA binding protein p79PIF, GMEB 2, GMEB2, KIAA1269, P79PIF, PIF p79, PIF79

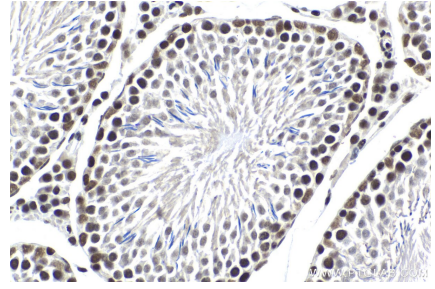
Selected Validation Data



Immunohistochemical analysis of paraffin-embedded human placenta tissue slide using KHC1990 (GMEB2 IHC Kit).



Immunohistochemical analysis of paraffin-embedded mouse testis tissue slide using KHC1990 (GMEB2 IHC Kit).



Immunohistochemical analysis of paraffin-embedded rat testis tissue slide using KHC1990 (GMEB2 IHC Kit).