

# IHC*easy* FBX05 Ready-To-Use IHC Kit

Catalog Number: **KHC1994**

## General Information

**Sample type:**  
FFPE tissue

**Cited sample type:**

**Reactivity:**  
Human, Mouse

**Cited Reactivity:**

**Assay type:**  
Immunohistochemistry

**Primary antibody type:**  
Rabbit Polyclonal

**Secondary antibody type:**  
Polymer-HRP-Goat anti-Rabbit

## Kit Component

Component	Size	Concentration
Antigen Retrieval Buffer	100 mL	50×
Washing Buffer	100 mL ×2	20×
Blocking Buffer	5 mL	RTU
Primary Antibody	5 mL	RTU
Secondary Antibody	5 mL	RTU
Chromogen Component A	0.2 mL	RTU
Chromogen Component B	4 mL	RTU
Signal Enhancer	5 mL	RTU
Counter Staining Reagent	5 mL	RTU
Mounting Media	5 mL	RTU
Control Slide	1 slide (Optional)	FFPE
Datasheet	1 Copy	
Manual	1 Copy	

## Storage Instructions

All the reagents are stored at 2-8°C. The kit is stable for 6 months from the date of receipt.

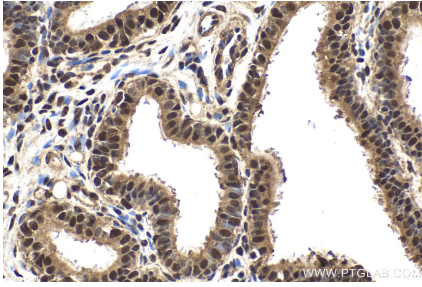
## Background

FBX05, also named as EMI1 and FBX5, is a key regulator of the normal cell cycle. It is a zinc finger protein expressed by a variety of adult tissues and especially in proliferating Ki-67-positive cells. It binds to the APC activators CDC20 and FZR1/CDH1 to prevent APC activation. FBX05 can also bind directly to the APC to inhibit substrate-binding.

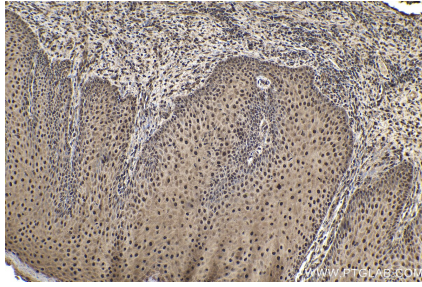
## Synonyms

Early mitotic inhibitor 1, EMI1, F box only protein 5, F box protein 5, FBX5, FBX05

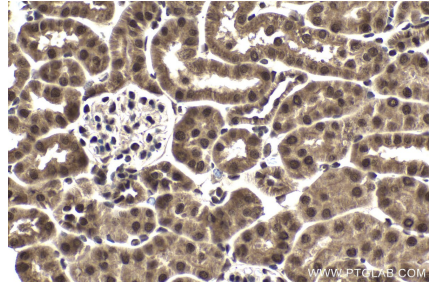
## Selected Validation Data



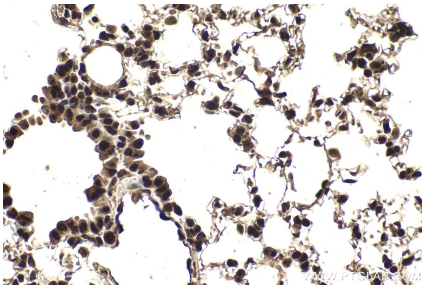
Immunohistochemical analysis of paraffin-embedded human ovary tumor tissue slide using KHC1994 (FBXO5 IHC Kit).



Immunohistochemical analysis of paraffin-embedded human skin cancer tissue slide using KHC1994 (FBXO5 IHC Kit).



Immunohistochemical analysis of paraffin-embedded mouse kidney tissue slide using KHC1994 (FBXO5 IHC Kit).



Immunohistochemical analysis of paraffin-embedded mouse lung tissue slide using KHC1994 (FBXO5 IHC Kit).