

IHC*easy* ZMIZ1 Ready-To-Use IHC Kit

Catalog Number: **KHC1997**

General Information

Sample type:
FFPE tissue
Cited sample type:
Reactivity:
Human, Mouse, Rat
Cited Reactivity:

Assay type:
Immunohistochemistry
Primary antibody type:
Rabbit Polyclonal
Secondary antibody type:
Polymer-HRP-Goat anti-Rabbit

Kit Component

Component	Size	Concentration
Antigen Retrieval Buffer	100 mL	50×
Washing Buffer	100 mL ×2	20×
Blocking Buffer	5 mL	RTU
Primary Antibody	5 mL	RTU
Secondary Antibody	5 mL	RTU
Chromogen Component A	0.2 mL	RTU
Chromogen Component B	4 mL	RTU
Signal Enhancer	5 mL	RTU
Counter Staining Reagent	5 mL	RTU
Mounting Media	5 mL	RTU
Control Slide	1 slide (Optional)	FFPE
Datasheet	1 Copy	
Manual	1 Copy	

Storage Instructions

All the reagents are stored at 2-8°C. The kit is stable for 6 months from the date of receipt.

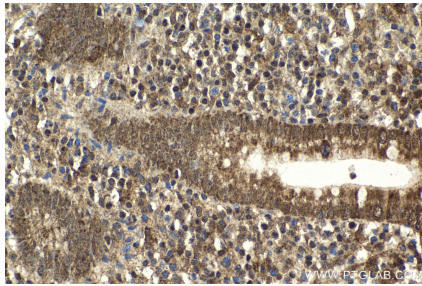
Background

ZMIZ2 and ZMIZ1 members of a PIAS-like family of proteins that interact with nuclear hormone receptors. Primary antibody in this kit is specific for ZMIZ1.

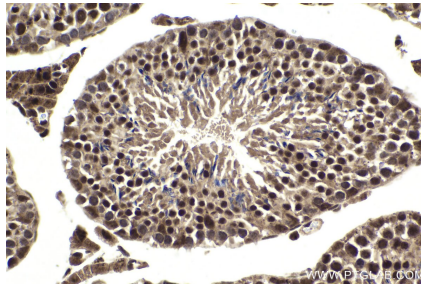
Synonyms

hZIMP10, KIAA1224, MIZ, PIAS like protein Zimp10, RAI17, Zimp10, ZMIZ1, ZMIZ1-Specific

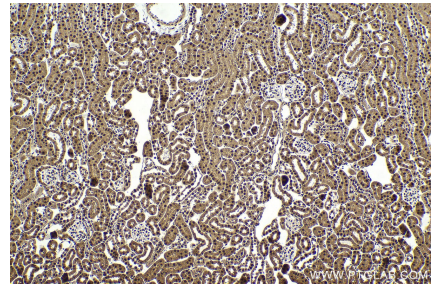
Selected Validation Data



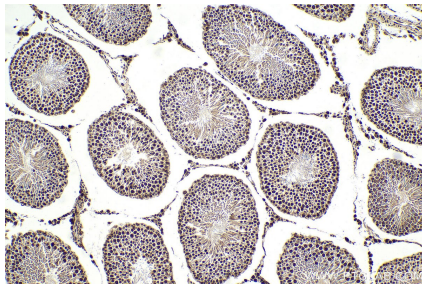
Immunohistochemical analysis of paraffin-embedded human appendicitis tissue slide using KHC1997 (ZMIZ1 IHC Kit).



Immunohistochemical analysis of paraffin-embedded mouse testis tissue slide using KHC1997 (ZMIZ1 IHC Kit).



Immunohistochemical analysis of paraffin-embedded mouse kidney tissue slide using KHC1997 (ZMIZ1 IHC Kit).



Immunohistochemical analysis of paraffin-embedded rat testis tissue slide using KHC1997 (ZMIZ1 IHC Kit).