

IHC*easy* STUB1 Ready-To-Use IHC Kit

Catalog Number: **KHC2003**

General Information

Sample type:
FFPE tissue

Cited sample type:

Reactivity:
Human, Mouse, Rat

Cited Reactivity:

Assay type:
Immunohistochemistry

Primary antibody type:
Rabbit Polyclonal

Secondary antibody type:
Polymer-HRP-Goat anti-Rabbit

Kit Component

Component	Size	Concentration
Antigen Retrieval Buffer	100 mL	50×
Washing Buffer	100 mL ×2	20×
Blocking Buffer	5 mL	RTU
Primary Antibody	5 mL	RTU
Secondary Antibody	5 mL	RTU
Chromogen Component A	0.2 mL	RTU
Chromogen Component B	4 mL	RTU
Signal Enhancer	5 mL	RTU
Counter Staining Reagent	5 mL	RTU
Mounting Media	5 mL	RTU
Control Slide	1 slide (Optional)	FFPE
Datasheet	1 Copy	
Manual	1 Copy	

Storage Instructions

All the reagents are stored at 2-8°C. The kit is stable for 6 months from the date of receipt.

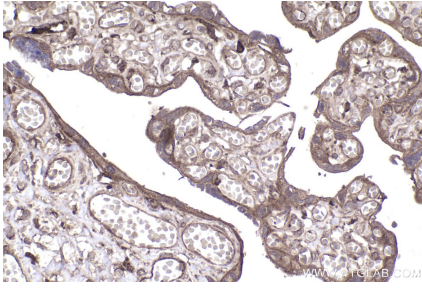
Background

STIP1 Homology and U-Box Containing Protein 1 (STUB1), formerly known as CHIP (C-terminus of HSP70-Interacting Protein), is a chaperone-dependent E3 ubiquitin ligase. STUB1 is highly conserved across species and is expressed in most tissues.

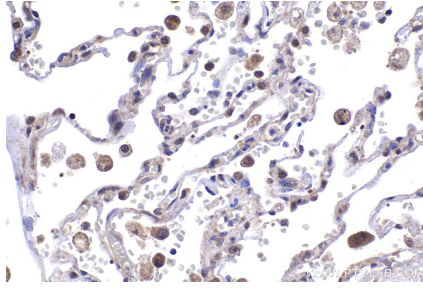
Synonyms

Antigen NY CO 7, CHIP, CLL associated antigen KW 8, HSPABP2, NY CO 7, SDCCAG7, STUB1, UBOX1

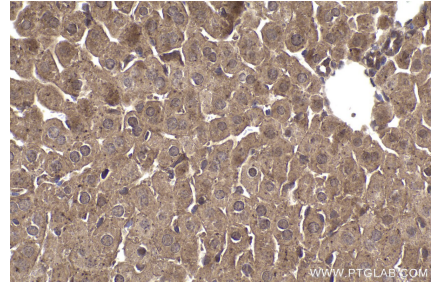
Selected Validation Data



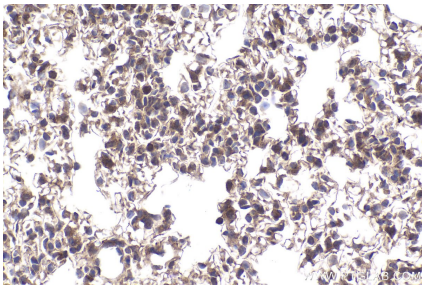
Immunohistochemical analysis of paraffin-embedded human placenta tissue slide using KHC2003 (STUB1 IHC Kit).



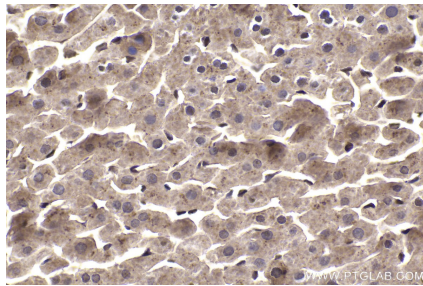
Immunohistochemical analysis of paraffin-embedded human lung tissue slide using KHC2003 (STUB1 IHC Kit).



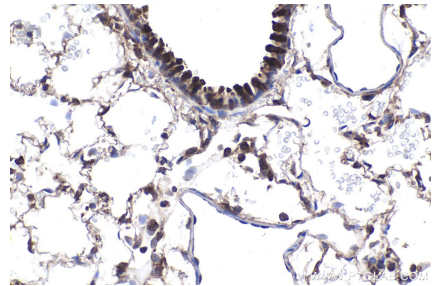
Immunohistochemical analysis of paraffin-embedded mouse liver tissue slide using KHC2003 (STUB1 IHC Kit).



Immunohistochemical analysis of paraffin-embedded mouse lung tissue slide using KHC2003 (STUB1 IHC Kit).



Immunohistochemical analysis of paraffin-embedded rat liver tissue slide using KHC2003 (STUB1 IHC Kit).



Immunohistochemical analysis of paraffin-embedded rat lung tissue slide using KHC2003 (STUB1 IHC Kit).