

# IHC*easy* RUVBL2 Ready-To-Use IHC Kit

Catalog Number: **KHC2011**

## General Information

**Sample type:**  
FFPE tissue

**Cited sample type:**

**Reactivity:**  
Human, Mouse, Rat

**Cited Reactivity:**

**Assay type:**  
Immunohistochemistry

**Primary antibody type:**  
Mouse Monoclonal

**Secondary antibody type:**  
Polymer-HRP-Goat anti-Mouse

## Kit Component

Component	Size	Concentration
Antigen Retrieval Buffer	100 mL	50×
Washing Buffer	100 mL ×2	20×
Blocking Buffer	5 mL	RTU
Primary Antibody	5 mL	RTU
Secondary Antibody	5 mL	RTU
Chromogen Component A	0.2 mL	RTU
Chromogen Component B	4 mL	RTU
Signal Enhancer	5 mL	RTU
Counter Staining Reagent	5 mL	RTU
Mounting Media	5 mL	RTU
Control Slide	1 slide (Optional)	FFPE
Datasheet	1 Copy	
Manual	1 Copy	

## Storage Instructions

All the reagents are stored at 2-8°C. The kit is stable for 6 months from the date of receipt.

## Background

RUVBL2 belongs to the conserved ATPases associated with various cellular activities (AAA+) protein subfamily, which is characterized by the presence of conserved Walker A and B motifs that are involved in ATP binding and hydrolysis. The AAA+ (ATPases associated with diverse cellular activities) ATPases, RUVBL1 and RUVBL2, were originally isolated as components of transcriptional complexes and shown to function in a number of different cellular processes, including transcriptional regulation, chromatin remodelling and DNA damage responses.

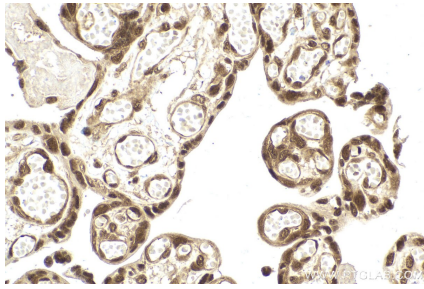
## Synonyms

48 kDa TBP interacting protein, CGI 46, ECP 51, ECP51, INO80 complex subunit J, INO80J, Repressing pontin 52, REPTIN, Reptin 52, RuvB like 2, RuvB like 2 (E. coli), RUVBL2, RVB2, TAP54 beta, TIH2, TIP48, TIP49B

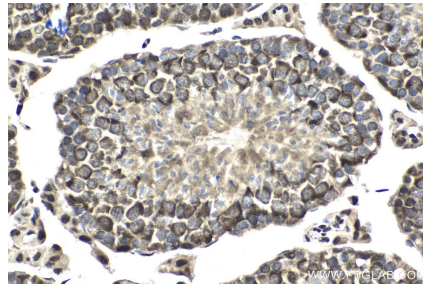
For technical support and original validation data for this product please contact:  
T: 1 (888) 4PTGLAB (1-888-478-4522) (toll free in USA), or 1(312) 455-8498 (outside USA)  
E: [proteintech@ptglab.com](mailto:proteintech@ptglab.com)  
W: [ptglab.com](http://ptglab.com)

This product is exclusively available under Proteintech Group brand and is not available to purchase from any other manufacturer.

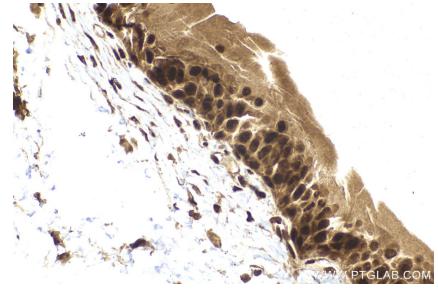
## Selected Validation Data



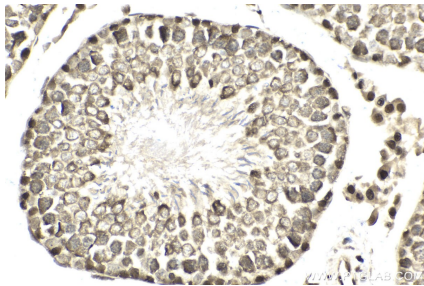
Immunohistochemical analysis of paraffin-embedded human placenta tissue slide using KHC2011 (RUVBL2 IHC Kit).



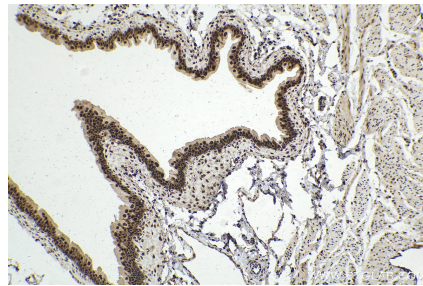
Immunohistochemical analysis of paraffin-embedded mouse testis tissue slide using KHC2011 (RUVBL2 IHC Kit).



Immunohistochemical analysis of paraffin-embedded mouse bladder tissue slide using KHC2011 (RUVBL2 IHC Kit).



Immunohistochemical analysis of paraffin-embedded rat testis tissue slide using KHC2011 (RUVBL2 IHC Kit).



Immunohistochemical analysis of paraffin-embedded rat bladder tissue slide using KHC2011 (RUVBL2 IHC Kit).