

IHC*easy* BTRC Ready-To-Use IHC Kit

Catalog Number: **KHC2013**

General Information

Sample type:
FFPE tissue
Cited sample type:
Reactivity:
Human, Mouse
Cited Reactivity:

Assay type:
Immunohistochemistry
Primary antibody type:
Rabbit Polyclonal
Secondary antibody type:
Polymer-HRP-Goat anti-Rabbit

Kit Component

Component	Size	Concentration
Antigen Retrieval Buffer	100 mL	50×
Washing Buffer	100 mL ×2	20×
Blocking Buffer	5 mL	RTU
Primary Antibody	5 mL	RTU
Secondary Antibody	5 mL	RTU
Chromogen Component A	0.2 mL	RTU
Chromogen Component B	4 mL	RTU
Signal Enhancer	5 mL	RTU
Counter Staining Reagent	5 mL	RTU
Mounting Media	5 mL	RTU
Control Slide	1 slide (Optional)	FFPE
Datasheet	1 Copy	
Manual	1 Copy	

Storage Instructions

All the reagents are stored at 2-8°C. The kit is stable for 6 months from the date of receipt.

Background

BTRC, also named as BTRCP, FBW1A, and FBXW1A, is an F-box family protein. It is a Substrate recognition component of an SCF (SKP1-CUL1-F-box protein) E3 ubiquitin-protein ligase complex which mediates the ubiquitination and subsequent proteasomal degradation of target proteins. BTRC targets many important proteins with diverse functions, such as p53, HRAS, NF-kappa-B p105 subunit, ATF4, SMAD3, SMAD4, CDC25A, DLG1, FBXO5, and the cell cycle checkpoint protein claspin, for ubiquitin-mediated degradation. It is required for the activation of NFkB-mediated transcription by IL1B, MAP3K14, MAP3K1, IKKKB, and TNF. Required for proteolytic processing of GLI3.

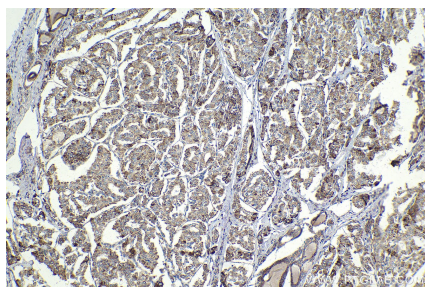
Synonyms

FBXW1A, FBW1A, F-box/WD repeat-containing protein 1A, F-box and WD repeats protein beta-TrCP, Epididymis tissue protein Li 2a

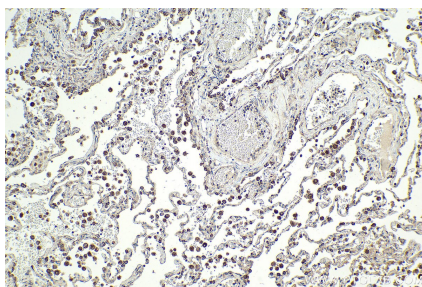
For technical support and original validation data for this product please contact:
T: 1 (888) 4PTGLAB (1-888-478-4522) (toll free in USA), or 1(312) 455-8498 (outside USA)
E: proteintech@ptglab.com
W: ptglab.com

This product is exclusively available under Proteintech Group brand and is not available to purchase from any other manufacturer.

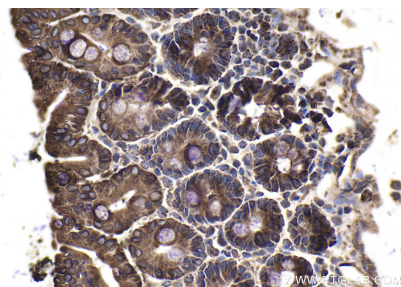
Selected Validation Data



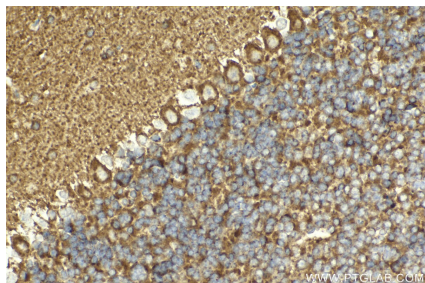
Immunohistochemical analysis of paraffin-embedded human thyroid cancer tissue slide using KHC2013 (BTRC IHC Kit).



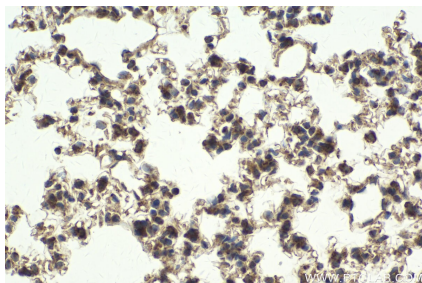
Immunohistochemical analysis of paraffin-embedded human lung tissue slide using KHC2013 (BTRC IHC Kit).



Immunohistochemical analysis of paraffin-embedded mouse intestine tissue slide using KHC2013 (BTRC IHC Kit).



Immunohistochemical analysis of paraffin-embedded mouse cerebellum tissue slide using KHC2013 (BTRC IHC Kit).



Immunohistochemical analysis of paraffin-embedded mouse lung tissue slide using KHC2013 (BTRC IHC Kit).