

# IHC*easy* KLF13 Ready-To-Use IHC Kit

Catalog Number: **KHC2019**

## General Information

Sample type:  
FFPE tissue  
Cited sample type:  
Reactivity:  
Human  
Cited Reactivity:

Assay type:  
Immunohistochemistry  
Primary antibody type:  
Rabbit Polyclonal  
Secondary antibody type:  
Polymer-HRP-Goat anti-Rabbit

## Kit Component

Component	Size	Concentration
Antigen Retrieval Buffer	100 mL	50×
Washing Buffer	100 mL ×2	20×
Blocking Buffer	5 mL	RTU
Primary Antibody	5 mL	RTU
Secondary Antibody	5 mL	RTU
Chromogen Component A	0.2 mL	RTU
Chromogen Component B	4 mL	RTU
Signal Enhancer	5 mL	RTU
Counter Staining Reagent	5 mL	RTU
Mounting Media	5 mL	RTU
Control Slide	1 slide (Optional)	FFPE
Datasheet	1 Copy	
Manual	1 Copy	

## Storage Instructions

All the reagents are stored at 2-8°C. The kit is stable for 6 months from the date of receipt.

## Background

Kruppel-like factor 13 (KLF13) is a member of transcription factors, which contains 3 zinc finger DNA-binding domains. These transcription factors bind to CG-rich sequences and related GT and CACCC boxes. KLF13 involved in activation of transcription of variety of genes in the cells of erythroid lineage, such as GATA1, glycophorin B. It also binds to the A and A/B RANTES promoter binding sites, the same as NFκB, and then transactivates the RANTES gene.

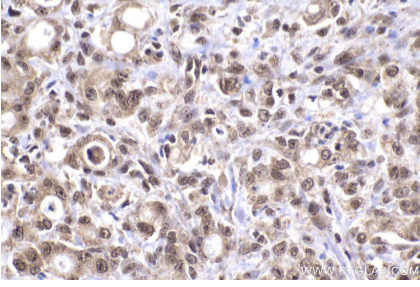
## Synonyms

BTE binding protein 3, BTEB3, FKLF2, KLF13, Krueppel like factor 13, Kruppel like factor 13, NSLP1, RFLAT 1, RFLAT1, Transcription factor BTEB3, Transcription factor NSLP1

For technical support and original validation data for this product please contact:  
T: 1 (888) 4PTGLAB (1-888-478-4522) (toll free in USA), or 1(312) 455-8498 (outside USA)  
E: [proteintech@ptglab.com](mailto:proteintech@ptglab.com)  
W: [ptglab.com](http://ptglab.com)

This product is exclusively available under Proteintech Group brand and is not available to purchase from any other manufacturer.

## Selected Validation Data



Immunohistochemical analysis of paraffin-embedded human stomach cancer tissue slide using KHC2019 (KLF13 IHC Kit).