

IHC*easy* KDM3A Ready-To-Use IHC Kit

Catalog Number: **KHC2023**

General Information

Sample type:
FFPE tissue

Cited sample type:

Reactivity:
Human, Mouse, Rat

Cited Reactivity:

Assay type:
Immunohistochemistry

Primary antibody type:
Rabbit Polyclonal

Secondary antibody type:
Polymer-HRP-Goat anti-Rabbit

Kit Component

Component	Size	Concentration
Antigen Retrieval Buffer	100 mL	50×
Washing Buffer	100 mL ×2	20×
Blocking Buffer	5 mL	RTU
Primary Antibody	5 mL	RTU
Secondary Antibody	5 mL	RTU
Chromogen Component A	0.2 mL	RTU
Chromogen Component B	4 mL	RTU
Signal Enhancer	5 mL	RTU
Counter Staining Reagent	5 mL	RTU
Mounting Media	5 mL	RTU
Control Slide	1 slide (Optional)	FFPE
Datasheet	1 Copy	
Manual	1 Copy	

Storage Instructions

All the reagents are stored at 2-8°C. The kit is stable for 6 months from the date of receipt.

Background

KDM3A, also name as JMJD1A, JHDM2A, JMJD1, JMJD1A, KIAA0742 and TSGA, belongs to the JHDM2 histone demethylase family. It is a histone demethylase that specifically demethylates 'Lys-9' of histone H3, thereby playing a central role in histone code. It is involved in spermatogenesis by regulating expression of target genes such as PRM1 and TMP1 which are required for packaging and condensation of sperm chromatin. It is involved in obesity resistance through regulation of metabolic genes such as PPARA and UCP1. JMJD1A is a useful biomarker for hypoxic tumor cells and a prognostic marker that could be a promising therapeutic target against CRC.

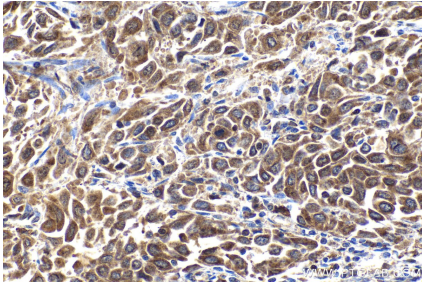
Synonyms

JHDM2A, JHMD2A, JMJD1, JMJD1A, KDM3A, KDM3A, JMJD1A, KIAA0742, lysine (K) demethylase 3A, Lysine specific demethylase 3A, TSGA

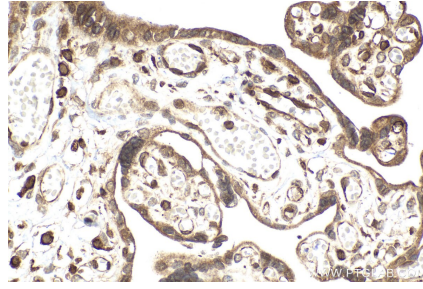
For technical support and original validation data for this product please contact:
T: 1 (888) 4PTGLAB (1-888-478-4522) (toll free in USA), or 1(312) 455-8498 (outside USA)
E: proteintech@ptglab.com
W: ptglab.com

This product is exclusively available under Proteintech Group brand and is not available to purchase from any other manufacturer.

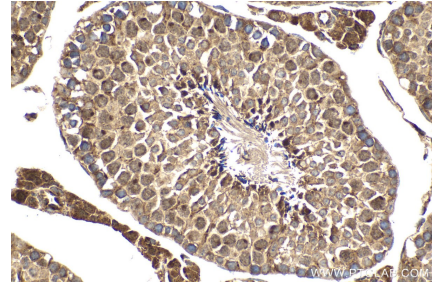
Selected Validation Data



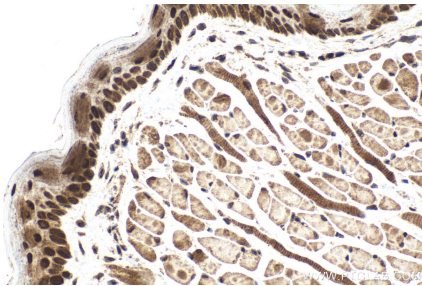
Immunohistochemical analysis of paraffin-embedded human cervical cancer tissue slide using KHC2023 (KDM3A IHC Kit).



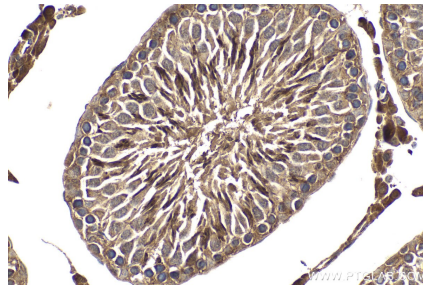
Immunohistochemical analysis of paraffin-embedded human placenta tissue slide using KHC2023 (KDM3A IHC Kit).



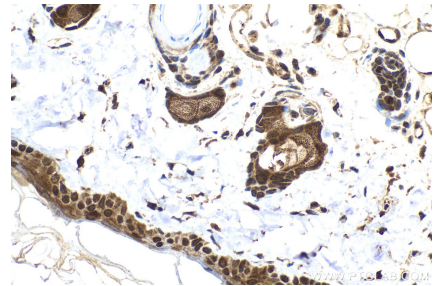
Immunohistochemical analysis of paraffin-embedded mouse testis tissue slide using KHC2023 (KDM3A IHC Kit).



Immunohistochemical analysis of paraffin-embedded mouse tongue tissue slide using KHC2023 (KDM3A IHC Kit).



Immunohistochemical analysis of paraffin-embedded rat testis tissue slide using KHC2023 (KDM3A IHC Kit).



Immunohistochemical analysis of paraffin-embedded rat skin tissue slide using KHC2023 (KDM3A IHC Kit).