

IHC*easy* EID1 Ready-To-Use IHC Kit

Catalog Number: **KHC2032**

General Information

Sample type:
FFPE tissue
Cited sample type:
Reactivity:
Human, Mouse, Rat
Cited Reactivity:

Assay type:
Immunohistochemistry
Primary antibody type:
Rabbit Polyclonal
Secondary antibody type:
Polymer-HRP-Goat anti-Rabbit

Kit Component

Component	Size	Concentration
Antigen Retrieval Buffer	100 mL	50×
Washing Buffer	100 mL ×2	20×
Blocking Buffer	5 mL	RTU
Primary Antibody	5 mL	RTU
Secondary Antibody	5 mL	RTU
Chromogen Component A	0.2 mL	RTU
Chromogen Component B	4 mL	RTU
Signal Enhancer	5 mL	RTU
Counter Staining Reagent	5 mL	RTU
Mounting Media	5 mL	RTU
Control Slide	1 slide (Optional)	FFPE
Datasheet	1 Copy	
Manual	1 Copy	

Storage Instructions

All the reagents are stored at 2-8°C. The kit is stable for 6 months from the date of receipt.

Background

EID1(EP300 interacting inhibitor of differentiation 1) is a member of the EID protein family, which regulates differentiation, transcription and acetyltransferase activity. EID1 function was originally identified as a transcriptional repressor which regulates cell cycle and differentiation, and leads to genome inactivation and instability by interacting with E3 ubiquitin ligase MDM2. EID1 is mainly located in the cytoplasm. It was translocated into the nuclei under stressed or pathological conditions such as AD patients and APP Tg mice brains.

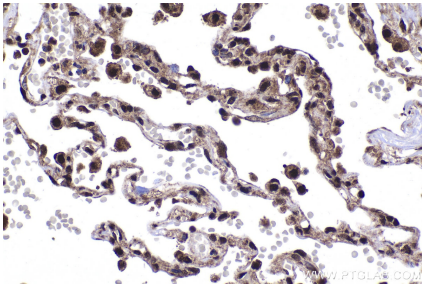
Synonyms

EID 1, E1A-like inhibitor of differentiation 1, CRI1, CRI 1, C15orf3

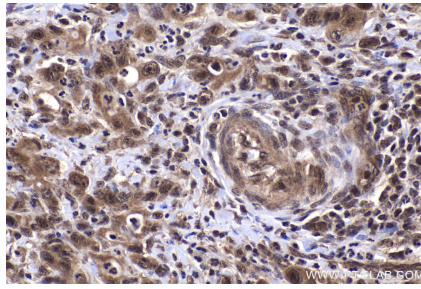
For technical support and original validation data for this product please contact:
T: 1 (888) 4PTGLAB (1-888-478-4522) (toll free in USA), or 1(312) 455-8498 (outside USA)
E: proteintech@ptglab.com
W: ptglab.com

This product is exclusively available under Proteintech Group brand and is not available to purchase from any other manufacturer.

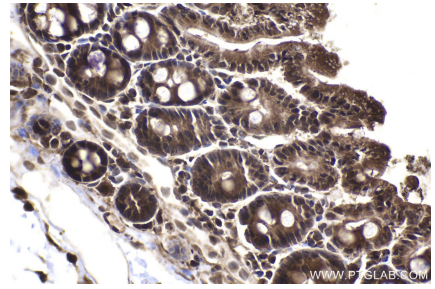
Selected Validation Data



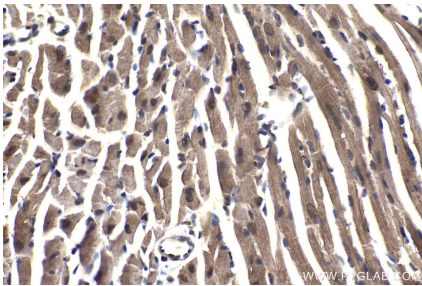
Immunohistochemical analysis of paraffin-embedded human lung tissue slide using KHC2032 (EID1 IHC Kit).



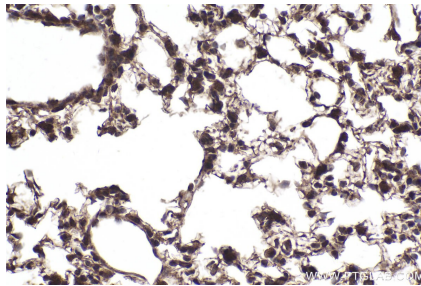
Immunohistochemical analysis of paraffin-embedded human stomach cancer tissue slide using KHC2032 (EID1 IHC Kit).



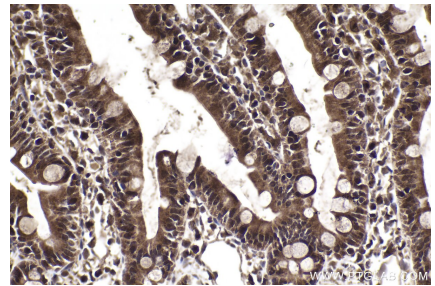
Immunohistochemical analysis of paraffin-embedded mouse intestine tissue slide using KHC2032 (EID1 IHC Kit).



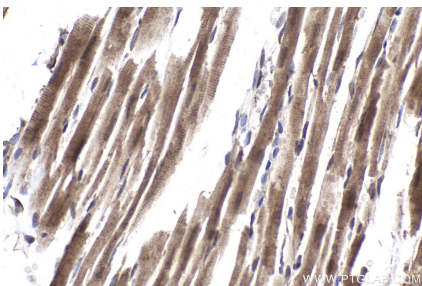
Immunohistochemical analysis of paraffin-embedded mouse heart tissue slide using KHC2032 (EID1 IHC Kit).



Immunohistochemical analysis of paraffin-embedded mouse lung tissue slide using KHC2032 (EID1 IHC Kit).



Immunohistochemical analysis of paraffin-embedded rat small intestine tissue slide using KHC2032 (EID1 IHC Kit).



Immunohistochemical analysis of paraffin-embedded rat heart tissue slide using KHC2032 (EID1 IHC Kit).