

# IHC*easy* PPP1CA Ready-To-Use IHC Kit

Catalog Number: **KHC2035**

## General Information

**Sample type:**  
FFPE tissue

**Cited sample type:**

**Reactivity:**  
Human, Mouse, Rat

**Cited Reactivity:**

**Assay type:**  
Immunohistochemistry

**Primary antibody type:**  
Mouse Monoclonal

**Secondary antibody type:**  
Polymer-HRP-Goat anti-Mouse

## Kit Component

Component	Size	Concentration
Antigen Retrieval Buffer	100 mL	50×
Washing Buffer	100 mL ×2	20×
Blocking Buffer	5 mL	RTU
Primary Antibody	5 mL	RTU
Secondary Antibody	5 mL	RTU
Chromogen Component A	0.2 mL	RTU
Chromogen Component B	4 mL	RTU
Signal Enhancer	5 mL	RTU
Counter Staining Reagent	5 mL	RTU
Mounting Media	5 mL	RTU
Control Slide	1 slide (Optional)	FFPE
Datasheet	1 Copy	
Manual	1 Copy	

## Storage Instructions

All the reagents are stored at 2-8°C. The kit is stable for 6 months from the date of receipt.

## Background

Protein phosphatase associates with over 200 regulatory proteins to form highly specific holoenzymes which dephosphorylate hundreds of biological targets. Type 1 protein phosphatase (PP1), a serine/threonine phosphatase, is essential for cell division and participates in the regulation of glycogen metabolism, muscle contractility, and protein synthesis. Four isoforms of PP1 have been characterized: PP1 $\alpha$ , PP1 $\delta$ , PP1 $\gamma$ 1 and PP1 $\gamma$ 2. It has been illustrated that PP1 dephosphorylates Rb and cdc25 during mitosis. A cell cycle-dependent phosphorylation at Thr320 of PP1 $\alpha$  by cdc2 kinase inhibits PP1 $\alpha$  activity.

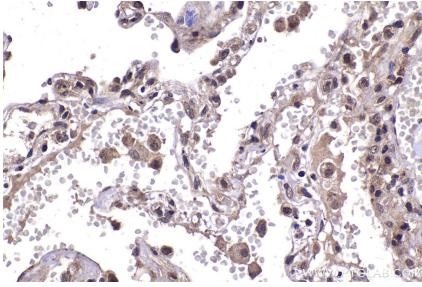
## Synonyms

PP 1A, PPP1A, PPP1CA

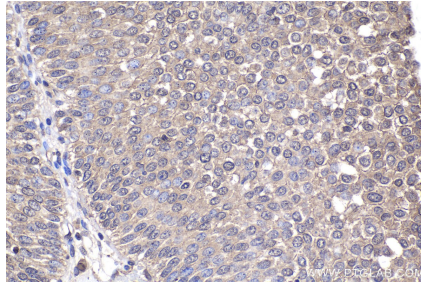
For technical support and original validation data for this product please contact:  
T: 1 (888) 4PTGLAB (1-888-478-4522) (toll free in USA), or 1(312) 455-8498 (outside USA)  
E: [proteintech@ptglab.com](mailto:proteintech@ptglab.com)  
W: [ptglab.com](http://ptglab.com)

This product is exclusively available under Proteintech Group brand and is not available to purchase from any other manufacturer.

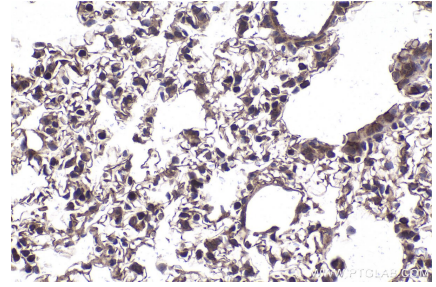
## Selected Validation Data



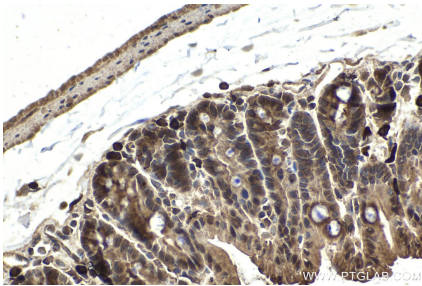
Immunohistochemical analysis of paraffin-embedded human lung tissue slide using KHC2035 (PPP1CA IHC Kit).



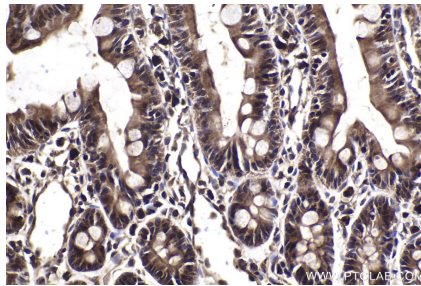
Immunohistochemical analysis of paraffin-embedded human urothelial carcinoma tissue slide using KHC2035 (PPP1CA IHC Kit).



Immunohistochemical analysis of paraffin-embedded mouse lung tissue slide using KHC2035 (PPP1CA IHC Kit).



Immunohistochemical analysis of paraffin-embedded mouse small intestine tissue slide using KHC2035 (PPP1CA IHC Kit).



Immunohistochemical analysis of paraffin-embedded rat small intestine tissue slide using KHC2035 (PPP1CA IHC Kit).