

IHC*easy* CDR2L Ready-To-Use IHC Kit

Catalog Number: **KHC2037**

General Information

Sample type:
FFPE tissue

Cited sample type:

Reactivity:
Human, Mouse

Cited Reactivity:

Assay type:
Immunohistochemistry

Primary antibody type:
Mouse Monoclonal

Secondary antibody type:
Polymer-HRP-Goat anti-Mouse

Kit Component

Component	Size	Concentration
Antigen Retrieval Buffer	100 mL	50×
Washing Buffer	100 mL ×2	20×
Blocking Buffer	5 mL	RTU
Primary Antibody	5 mL	RTU
Secondary Antibody	5 mL	RTU
Chromogen Component A	0.2 mL	RTU
Chromogen Component B	4 mL	RTU
Signal Enhancer	5 mL	RTU
Counter Staining Reagent	5 mL	RTU
Mounting Media	5 mL	RTU
Control Slide	1 slide (Optional)	FFPE
Datasheet	1 Copy	
Manual	1 Copy	

Storage Instructions

All the reagents are stored at 2-8°C. The kit is stable for 6 months from the date of receipt.

Background

Cerebellar degeneration-related protein 2-like(CDR2L), also named as HUMPPA or Paraneoplastic 62 kDa antigen, is a 465 amino acid protein, which belongs to the CDR2 family. CDR2L contains three potential coiled-coil regions. The functions of protein is so far not known. CDR2L is expressed in the brain and localizes in the cytoplasm.

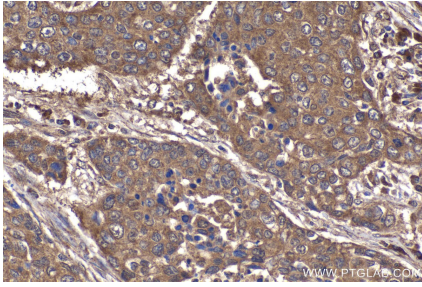
Synonyms

CDR2L, HUMPPA, Paraneoplastic 62 kDa antigen

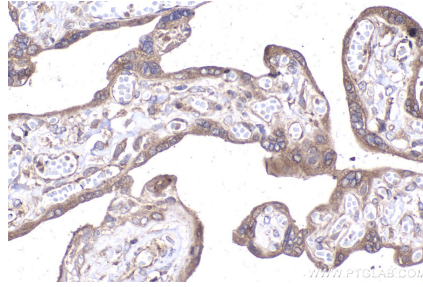
For technical support and original validation data for this product please contact:
T: 1 (888) 4PTGLAB (1-888-478-4522) (toll free in USA), or 1(312) 455-8498 (outside USA)
E: proteintech@ptglab.com
W: ptglab.com

This product is exclusively available under Proteintech Group brand and is not available to purchase from any other manufacturer.

Selected Validation Data



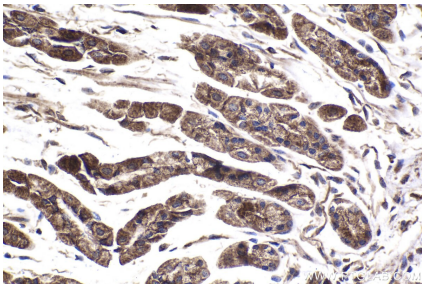
Immunohistochemical analysis of paraffin-embedded human lung cancer tissue slide using KHC2037 (CDR2L IHC Kit).



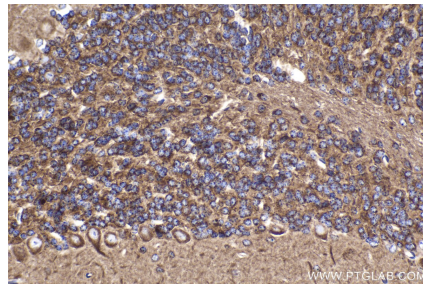
Immunohistochemical analysis of paraffin-embedded human placenta tissue slide using KHC2037 (CDR2L IHC Kit).



Immunohistochemical analysis of paraffin-embedded mouse lung tissue slide using KHC2037 (CDR2L IHC Kit).



Immunohistochemical analysis of paraffin-embedded mouse stomach tissue slide using KHC2037 (CDR2L IHC Kit).



Immunohistochemical analysis of paraffin-embedded mouse cerebellum tissue slide using KHC2037 (CDR2L IHC Kit).