

IHC*easy* ZC3H12D Ready-To-Use IHC Kit

Catalog Number: **KHC2038**

General Information

Sample type:
FFPE tissue
Cited sample type:
Reactivity:
Human, Mouse, Rat
Cited Reactivity:

Assay type:
Immunohistochemistry
Primary antibody type:
Rabbit Polyclonal
Secondary antibody type:
Polymer-HRP-Goat anti-Rabbit

Kit Component

Component	Size	Concentration
Antigen Retrieval Buffer	100 mL	50×
Washing Buffer	100 mL ×2	20×
Blocking Buffer	5 mL	RTU
Primary Antibody	5 mL	RTU
Secondary Antibody	5 mL	RTU
Chromogen Component A	0.2 mL	RTU
Chromogen Component B	4 mL	RTU
Signal Enhancer	5 mL	RTU
Counter Staining Reagent	5 mL	RTU
Mounting Media	5 mL	RTU
Control Slide	1 slide (Optional)	FFPE
Datasheet	1 Copy	
Manual	1 Copy	

Storage Instructions

All the reagents are stored at 2-8°C. The kit is stable for 6 months from the date of receipt.

Background

ZC3H12D, also named as MCP induced protein 4, is a 527 amino acid protein, which contains one C3H1-type zinc finger and belongs to the ZC3H12 family. ZC3H12D exists as three isoforms and localizes in the cytoplasm. ZC3H12D may regulate cell growth likely by suppressing RB1 phosphorylation and serves as a tumor suppressor in certain leukemia cells. ZC3H12D is expressed in normal human lymphocytes but defective in some leukemia/lymphoma cell lines.

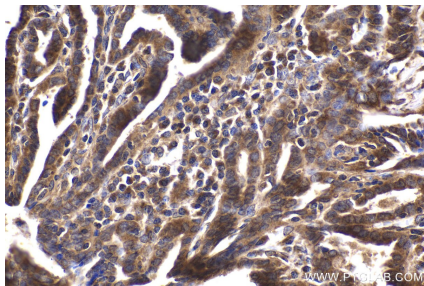
Synonyms

MCP1P4, MCP-induced protein 4, MCP induced protein 4, FLJ46041, EC:3.1.-.-

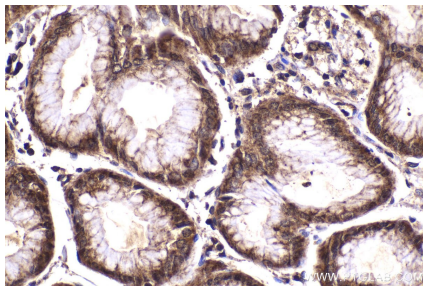
For technical support and original validation data for this product please contact:
T: 1 (888) 4PTGLAB (1-888-478-4522) (toll free in USA), or 1(312) 455-8498 (outside USA)
E: proteintech@ptglab.com
W: ptglab.com

This product is exclusively available under Proteintech Group brand and is not available to purchase from any other manufacturer.

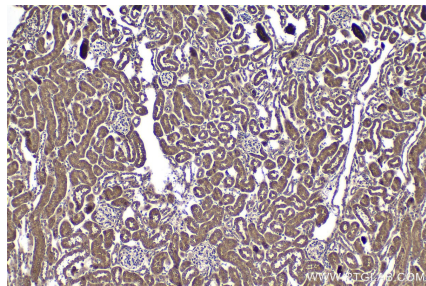
Selected Validation Data



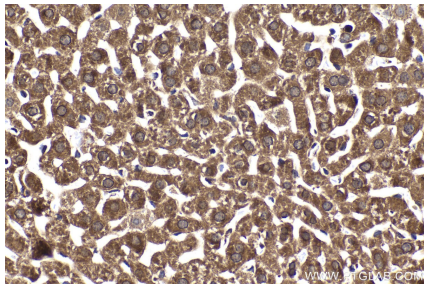
Immunohistochemical analysis of paraffin-embedded human thyroid cancer tissue slide using KHC2038 (ZC3H12D IHC Kit).



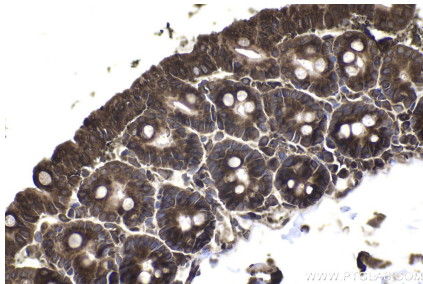
Immunohistochemical analysis of paraffin-embedded human stomach cancer tissue slide using KHC2038 (ZC3H12D IHC Kit).



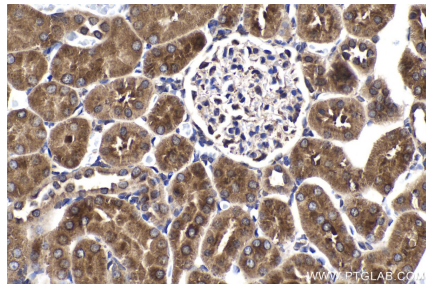
Immunohistochemical analysis of paraffin-embedded mouse kidney tissue slide using KHC2038 (ZC3H12D IHC Kit).



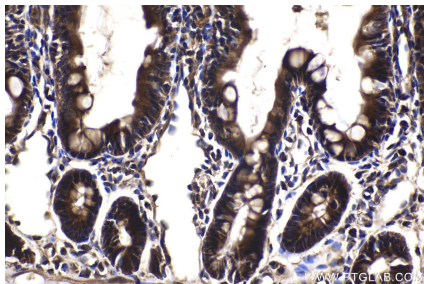
Immunohistochemical analysis of paraffin-embedded mouse liver tissue slide using KHC2038 (ZC3H12D IHC Kit).



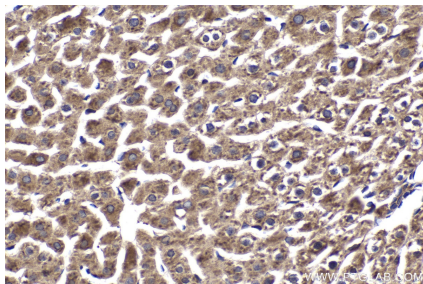
Immunohistochemical analysis of paraffin-embedded mouse intestine tissue slide using KHC2038 (ZC3H12D IHC Kit).



Immunohistochemical analysis of paraffin-embedded rat kidney tissue slide using KHC2038 (ZC3H12D IHC Kit).



Immunohistochemical analysis of paraffin-embedded rat small intestine tissue slide using KHC2038 (ZC3H12D IHC Kit).



Immunohistochemical analysis of paraffin-embedded rat liver tissue slide using KHC2038 (ZC3H12D IHC Kit).