

# IHC*easy* EXOC5 Ready-To-Use IHC Kit

Catalog Number: **KHC2046**

## General Information

Sample type:  
FFPE tissue  
Cited sample type:  
Reactivity:  
Human, Mouse, Rat  
Cited Reactivity:

Assay type:  
Immunohistochemistry  
Primary antibody type:  
Rabbit Polyclonal  
Secondary antibody type:  
Polymer-HRP-Goat anti-Rabbit

## Kit Component

Component	Size	Concentration
Antigen Retrieval Buffer	100 mL	50×
Washing Buffer	100 mL ×2	20×
Blocking Buffer	5 mL	RTU
Primary Antibody	5 mL	RTU
Secondary Antibody	5 mL	RTU
Chromogen Component A	0.2 mL	RTU
Chromogen Component B	4 mL	RTU
Signal Enhancer	5 mL	RTU
Counter Staining Reagent	5 mL	RTU
Mounting Media	5 mL	RTU
Control Slide	1 slide (Optional)	FFPE
Datasheet	1 Copy	
Manual	1 Copy	

## Storage Instructions

All the reagents are stored at 2-8°C. The kit is stable for 6 months from the date of receipt.

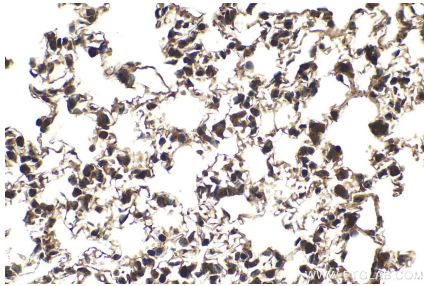
## Background

EXOC5 (SEC10), a component of the exocyst complex, is a broad tissue distribution. The exocyst complex, composed of eight evolutionarily conserved subunits (SEC3, SEC5, SEC6, SEC8, SEC10, SEC15, EXO70, and EXO84), is essential for targeting exocytic vesicles to specific docking sites on the plasma membrane. The complex is also essential for the biogenesis of epithelial cell surface polarity.

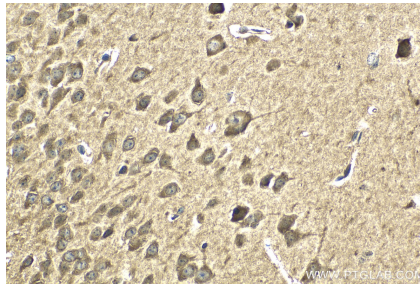
## Synonyms

SEC10L1, SEC10, hSec10, Exocyst complex component Sec10, Exocyst complex component 5

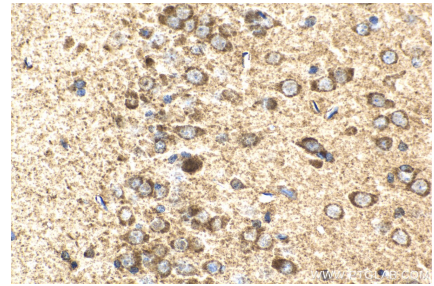
## Selected Validation Data



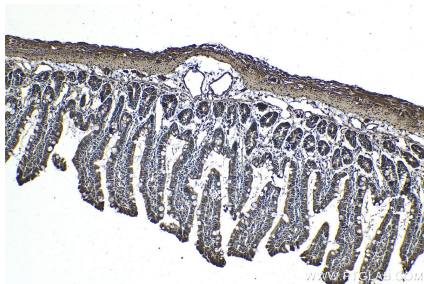
Immunohistochemical analysis of paraffin-embedded mouse lung tissue slide using KHC2046 (EXOC5 IHC Kit).



Immunohistochemical analysis of paraffin-embedded mouse brain tissue slide using KHC2046 (EXOC5 IHC Kit).



Immunohistochemical analysis of paraffin-embedded rat brain tissue slide using KHC2046 (EXOC5 IHC Kit).



Immunohistochemical analysis of paraffin-embedded rat small intestine tissue slide using KHC2046 (EXOC5 IHC Kit).