

IHC*easy* RCAS1 Ready-To-Use IHC Kit

Catalog Number: **KHC2050**

General Information

Sample type:
FFPE tissue

Cited sample type:

Reactivity:
Human, Mouse, Rat

Cited Reactivity:

Assay type:
Immunohistochemistry

Primary antibody type:
Mouse Monoclonal

Secondary antibody type:
Polymer-HRP-Goat anti-Mouse

Kit Component

Component	Size	Concentration
Antigen Retrieval Buffer	100 mL	50×
Washing Buffer	100 mL × 2	20×
Blocking Buffer	5 mL	RTU
Primary Antibody	5 mL	RTU
Secondary Antibody	5 mL	RTU
Chromogen Component A	0.2 mL	RTU
Chromogen Component B	4 mL	RTU
Signal Enhancer	5 mL	RTU
Counter Staining Reagent	5 mL	RTU
Mounting Media	5 mL	RTU
Control Slide	1 slide (Optional)	FFPE
Datasheet	1 Copy	
Manual	1 Copy	

Storage Instructions

All the reagents are stored at 2-8°C. The kit is stable for 6 months from the date of receipt.

Background

Estrogen receptor-binding fragment-associated antigen 9 (EBAG9) gene was identified as an estrogen-responsive gene. The gene product, receptor-binding cancer antigen expressed on SiSo cells (RCAS1), is associated with aggressive characteristics and poor overall survival for 15 different human malignancies. The correlation between RCAS1 expression and several clinicopathological variables, including tumor size, clinical stage, invasion depth and lymph node metastasis highlights this molecule's clinical significance. Expression of RCAS1 in tumor cells plays an important role in evasion from host immune system resulting tumor progression, invasion and metastasis. Further exploration of RCAS1 biological function will facilitate development of novel therapeutic strategies that target RCAS1.

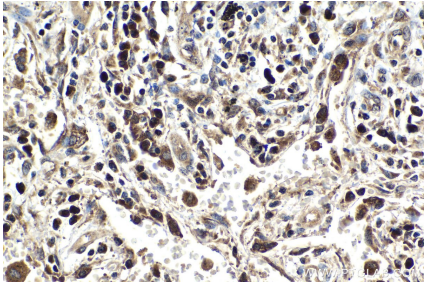
Synonyms

EB9, EBAG9, PDAF, RCAS1

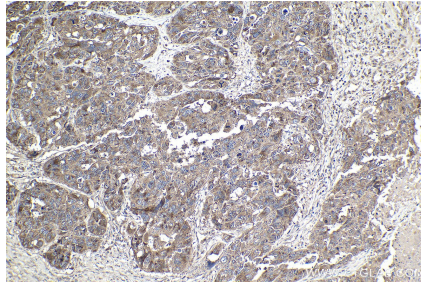
For technical support and original validation data for this product please contact:
T: 1 (888) 4PTGLAB (1-888-478-4522) (toll free in USA), or 1(312) 455-8498 (outside USA)
E: proteintech@ptglab.com
W: ptglab.com

This product is exclusively available under Proteintech Group brand and is not available to purchase from any other manufacturer.

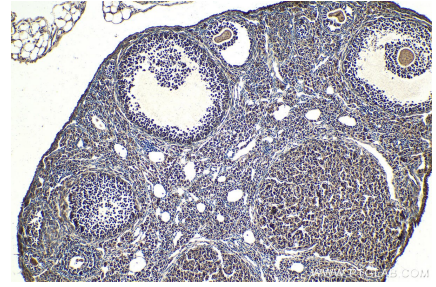
Selected Validation Data



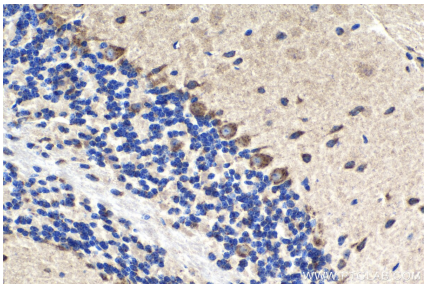
Immunohistochemical analysis of paraffin-embedded human lung tissue slide using KHC2050 (RCAS1 IHC Kit).



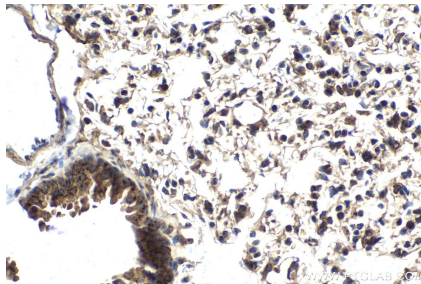
Immunohistochemical analysis of paraffin-embedded human ovary cancer tissue slide using KHC2050 (RCAS1 IHC Kit).



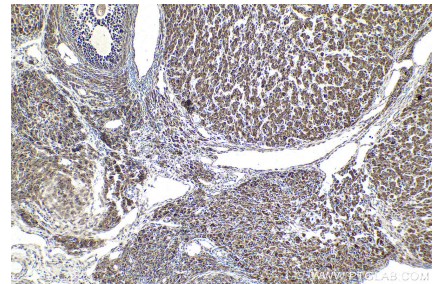
Immunohistochemical analysis of paraffin-embedded mouse ovary tissue slide using KHC2050 (RCAS1 IHC Kit).



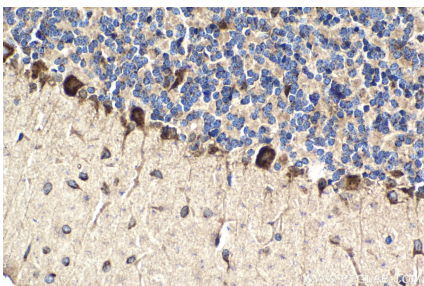
Immunohistochemical analysis of paraffin-embedded mouse cerebellum tissue slide using KHC2050 (RCAS1 IHC Kit).



Immunohistochemical analysis of paraffin-embedded mouse lung tissue slide using KHC2050 (RCAS1 IHC Kit).



Immunohistochemical analysis of paraffin-embedded rat ovary tissue slide using KHC2050 (RCAS1 IHC Kit).



Immunohistochemical analysis of paraffin-embedded rat cerebellum tissue slide using KHC2050 (RCAS1 IHC Kit).