

IHC*easy* POLR3G Ready-To-Use IHC Kit

Catalog Number: **KHC2071**

General Information

Sample type:
FFPE tissue

Cited sample type:

Reactivity:
Human, Mouse, Rat

Cited Reactivity:

Assay type:
Immunohistochemistry

Primary antibody type:
Rabbit Polyclonal

Secondary antibody type:
Polymer-HRP-Goat anti-Rabbit

Kit Component

Component	Size	Concentration
Antigen Retrieval Buffer	100 mL	50×
Washing Buffer	100 mL ×2	20×
Blocking Buffer	5 mL	RTU
Primary Antibody	5 mL	RTU
Secondary Antibody	5 mL	RTU
Chromogen Component A	0.2 mL	RTU
Chromogen Component B	4 mL	RTU
Signal Enhancer	5 mL	RTU
Counter Staining Reagent	5 mL	RTU
Mounting Media	5 mL	RTU
Control Slide	1 slide (Optional)	FFPE
Datasheet	1 Copy	
Manual	1 Copy	

Storage Instructions

All the reagents are stored at 2-8°C. The kit is stable for 6 months from the date of receipt.

Background

POLR3G also named as RNA polymerase III subunit C7 is a 223 amino acid protein, which belongs to eukaryotic RPC7 RNA polymerase subunit family. POLR3G localizes in the nucleus and is a component of the RNA polymerase III complex, which may be involved either in the recruitment and stabilization of the subcomplex within RNA polymerase III, or in stimulating catalytic functions of other subunits during initiation.

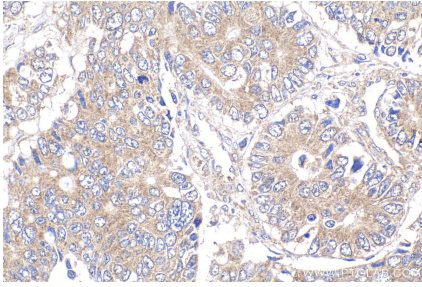
Synonyms

POLR3G, RNA polymerase III subunit C7, RPC32, RPC7

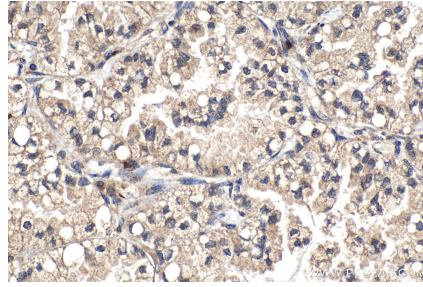
For technical support and original validation data for this product please contact:
T: 1 (888) 4PTGLAB (1-888-478-4522) (toll free in USA), or 1(312) 455-8498 (outside USA)
E: proteintech@ptglab.com
W: ptglab.com

This product is exclusively available under Proteintech Group brand and is not available to purchase from any other manufacturer.

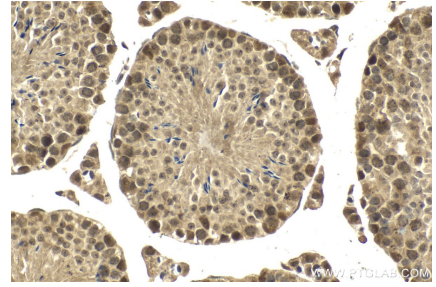
Selected Validation Data



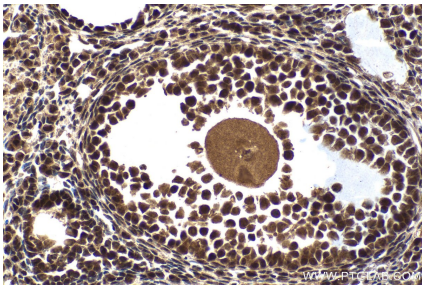
Immunohistochemical analysis of paraffin-embedded human stomach cancer tissue slide using KHC2071 (POLR3G IHC Kit).



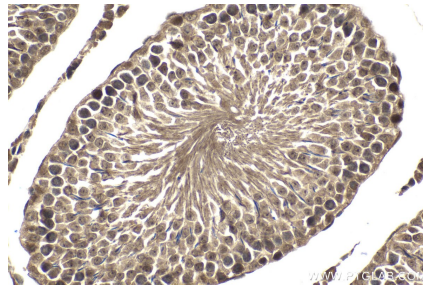
Immunohistochemical analysis of paraffin-embedded human lung cancer tissue slide using KHC2071 (POLR3G IHC Kit).



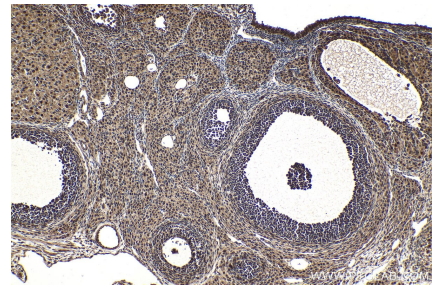
Immunohistochemical analysis of paraffin-embedded mouse testis tissue slide using KHC2071 (POLR3G IHC Kit).



Immunohistochemical analysis of paraffin-embedded mouse ovary tissue slide using KHC2071 (POLR3G IHC Kit).



Immunohistochemical analysis of paraffin-embedded rat testis tissue slide using KHC2071 (POLR3G IHC Kit).



Immunohistochemical analysis of paraffin-embedded rat ovary tissue slide using KHC2071 (POLR3G IHC Kit).