

IHC*easy* SEPT4 Ready-To-Use IHC Kit

Catalog Number: **KHC2073**

General Information

Sample type:
FFPE tissue
Cited sample type:
Reactivity:
Human, Mouse, Rat
Cited Reactivity:

Assay type:
Immunohistochemistry
Primary antibody type:
Rabbit Recombinant
Secondary antibody type:
Polymer-HRP-Goat anti-Rabbit

Kit Component

Component	Size	Concentration
Antigen Retrieval Buffer	100 mL	50×
Washing Buffer	100 mL ×2	20×
Blocking Buffer	5 mL	RTU
Primary Antibody	5 mL	RTU
Secondary Antibody	5 mL	RTU
Chromogen Component A	0.2 mL	RTU
Chromogen Component B	4 mL	RTU
Signal Enhancer	5 mL	RTU
Counter Staining Reagent	5 mL	RTU
Mounting Media	5 mL	RTU
Control Slide	1 slide (Optional)	FFPE
Datasheet	1 Copy	
Manual	1 Copy	

Storage Instructions

All the reagents are stored at 2-8°C. The kit is stable for 6 months from the date of receipt.

Background

Spetin 4 is a member of the septin family of nucleotide binding proteins, originally described in yeast as cell division cycle regulatory proteins. Spetin 4 was widely expressed in brain and heart, also expressed in colorectal cancers and malignant melanomas. This protein has been implicated in diverse cellular functions, including cytokinesis, apoptosis, and tumor suppression.

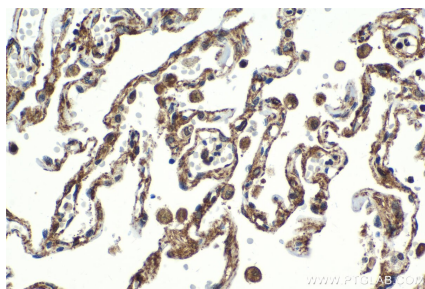
Synonyms

ARTS, BRADEION, Bradeion beta, Brain protein H5, CE5B3, CE5B3 beta, Cerebral protein 7, H5, hCDCREL 2, hucep 7, MART, Peanut like protein 2, PNUTL2, SEP4, SEPT4, septin 4

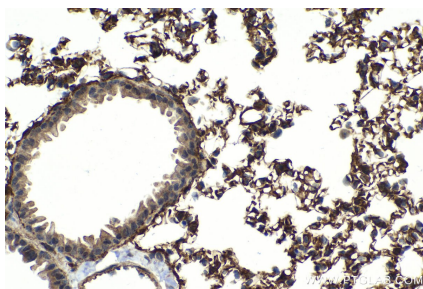
For technical support and original validation data for this product please contact:
T: 1 (888) 4PTGLAB (1-888-478-4522) (toll free in USA), or 1(312) 455-8498 (outside USA)
E: proteintech@ptglab.com
W: ptglab.com

This product is exclusively available under Proteintech Group brand and is not available to purchase from any other manufacturer.

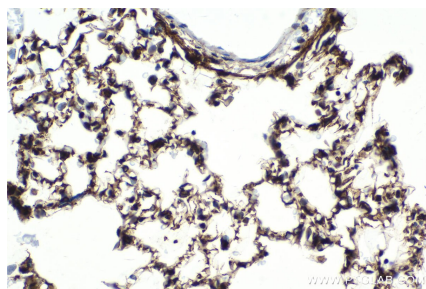
Selected Validation Data



Immunohistochemical analysis of paraffin-embedded human lung tissue slide using KHC2073 (SEPT4 IHC Kit).



Immunohistochemical analysis of paraffin-embedded mouse lung tissue slide using KHC2073 (SEPT4 IHC Kit).



Immunohistochemical analysis of paraffin-embedded rat lung tissue slide using KHC2073 (SEPT4 IHC Kit).