

IHC*easy* MAP3K7/TAK1 Ready-To-Use IHC Kit

Catalog Number: **KHC2080**

General Information

Sample type:
FFPE tissue

Cited sample type:

Reactivity:
Human, Mouse, Rat

Cited Reactivity:

Assay type:
Immunohistochemistry

Primary antibody type:
Rabbit Polyclonal

Secondary antibody type:
Polymer-HRP-Goat anti-Rabbit

Kit Component

Component	Size	Concentration
Antigen Retrieval Buffer	100 mL	50×
Washing Buffer	100 mL ×2	20×
Blocking Buffer	5 mL	RTU
Primary Antibody	5 mL	RTU
Secondary Antibody	5 mL	RTU
Chromogen Component A	0.2 mL	RTU
Chromogen Component B	4 mL	RTU
Signal Enhancer	5 mL	RTU
Counter Staining Reagent	5 mL	RTU
Mounting Media	5 mL	RTU
Control Slide	1 slide (Optional)	FFPE
Datasheet	1 Copy	
Manual	1 Copy	

Storage Instructions

All the reagents are stored at 2-8°C. The kit is stable for 6 months from the date of receipt.

Background

MAP3K7(Mitogen-activated protein kinase kinase kinase 7) is also named as TAK1 and belongs to the MAP kinase kinase kinase subfamily. It plays an important role in the cascades of cellular responses evoked by changes in the environment. It has been linked to interleukin-1 receptor and tumor necrosis factor receptor signaling.

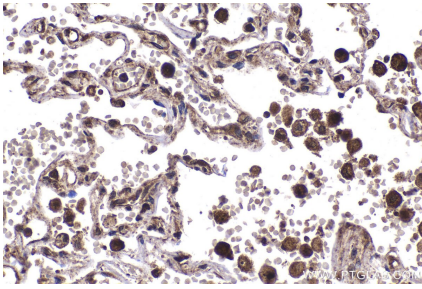
Synonyms

MAP3K7, TAK1, TGF beta activated kinase 1, TGF1a

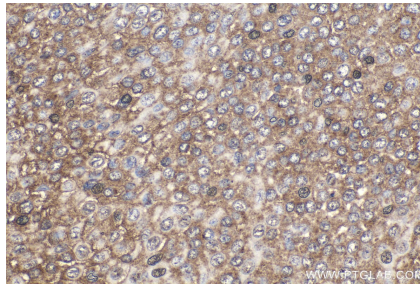
For technical support and original validation data for this product please contact:
T: 1 (888) 4PTGLAB (1-888-478-4522) (toll free in USA), or 1(312) 455-8498 (outside USA)
E: proteintech@ptglab.com
W: ptglab.com

This product is exclusively available under Proteintech Group brand and is not available to purchase from any other manufacturer.

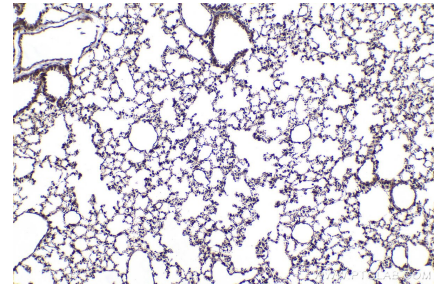
Selected Validation Data



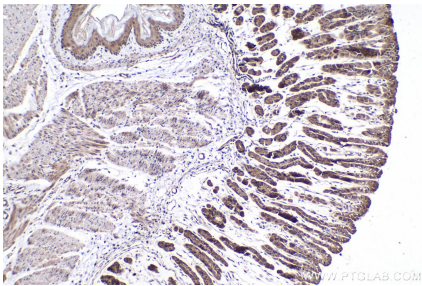
Immunohistochemical analysis of paraffin-embedded human lung tissue slide using KHC2080 (MAP3K7/TAK1 IHC Kit).



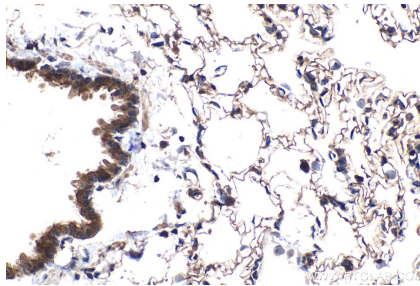
Immunohistochemical analysis of paraffin-embedded human urothelial carcinoma tissue slide using KHC2080 (MAP3K7/TAK1 IHC Kit).



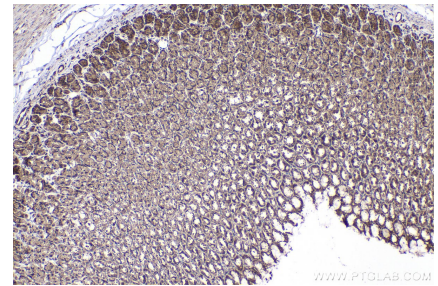
Immunohistochemical analysis of paraffin-embedded mouse lung tissue slide using KHC2080 (MAP3K7/TAK1 IHC Kit).



Immunohistochemical analysis of paraffin-embedded mouse stomach tissue slide using KHC2080 (MAP3K7/TAK1 IHC Kit).



Immunohistochemical analysis of paraffin-embedded rat lung tissue slide using KHC2080 (MAP3K7/TAK1 IHC Kit).



Immunohistochemical analysis of paraffin-embedded rat stomach tissue slide using KHC2080 (MAP3K7/TAK1 IHC Kit).