

# IHC*easy* NCK2 Ready-To-Use IHC Kit

Catalog Number: **KHC2090**

## General Information

Sample type:  
FFPE tissue  
Cited sample type:  
Reactivity:  
Human, Mouse, Rat  
Cited Reactivity:

Assay type:  
Immunohistochemistry  
Primary antibody type:  
Rabbit Polyclonal  
Secondary antibody type:  
Polymer-HRP-Goat anti-Rabbit

## Kit Component

Component	Size	Concentration
Antigen Retrieval Buffer	100 mL	50×
Washing Buffer	100 mL ×2	20×
Blocking Buffer	5 mL	RTU
Primary Antibody	5 mL	RTU
Secondary Antibody	5 mL	RTU
Chromogen Component A	0.2 mL	RTU
Chromogen Component B	4 mL	RTU
Signal Enhancer	5 mL	RTU
Counter Staining Reagent	5 mL	RTU
Mounting Media	5 mL	RTU
Control Slide	1 slide (Optional)	FFPE
Datasheet	1 Copy	
Manual	1 Copy	

## Storage Instructions

All the reagents are stored at 2-8°C. The kit is stable for 6 months from the date of receipt.

## Background

Lots of the protein-protein interactions that are essential for eukaryotic intracellular signal transduction are mediated by protein binding modules including SH2, SH3, and LIM domains. NCK is a SH3- and SH2-containing adaptor protein implicated in coordinating various signaling pathways, including those of growth factor receptors and cell adhesion receptors. NCK-2 is a ubiquitously expressed and NCK-related adaptor protein comprising primarily three N-terminal SH3 domains and one C-terminal SH2 domain. NCK-2 interacts with PINCH, a LIM-only protein implicated in integrin-linked kinase signaling, and recognizes several key components of growth factor kinase-signaling pathways including EGF receptors, PDGF receptor, and IRS-1. NCK-2 may thus function as an adaptor protein connecting the growth factor receptor-signaling pathways with the integrin-signaling pathways. NCK-2 also interacts with focal adhesion kinase (FAK), a cytoplasmic protein tyrosine kinase critically involved in the cellular control of motility.

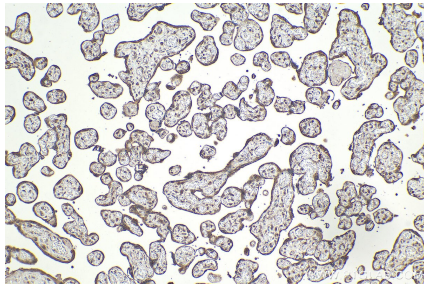
## Synonyms

SH2/SH3 adaptor protein NCK-beta, NCKbeta, Nck-2, Growth factor receptor-bound protein 4, GRB4

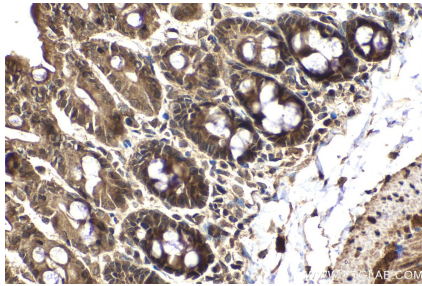
For technical support and original validation data for this product please contact:  
T: 1 (888) 4PTGLAB (1-888-478-4522) (toll free in USA), or 1(312) 455-8498 (outside USA)  
E: [proteintech@ptglab.com](mailto:proteintech@ptglab.com)  
W: [ptglab.com](http://ptglab.com)

This product is exclusively available under Proteintech Group brand and is not available to purchase from any other manufacturer.

## Selected Validation Data



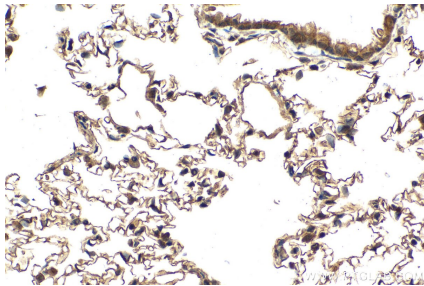
Immunohistochemical analysis of paraffin-embedded human placenta tissue slide using KHC2090 (NCK2 IHC Kit).



Immunohistochemical analysis of paraffin-embedded mouse intestine tissue slide using KHC2090 (NCK2 IHC Kit).



Immunohistochemical analysis of paraffin-embedded rat small intestine tissue slide using KHC2090 (NCK2 IHC Kit).



Immunohistochemical analysis of paraffin-embedded rat lung tissue slide using KHC2090 (NCK2 IHC Kit).