

# IHC*easy* TRAK2 Ready-To-Use IHC Kit

Catalog Number: **KHC2095**

## General Information

Sample type:  
FFPE tissue  
Cited sample type:  
Reactivity:  
Human, Mouse, Rat  
Cited Reactivity:

Assay type:  
Immunohistochemistry  
Primary antibody type:  
Rabbit Polyclonal  
Secondary antibody type:  
Polymer-HRP-Goat anti-Rabbit

## Kit Component

Component	Size	Concentration
Antigen Retrieval Buffer	100 mL	50×
Washing Buffer	100 mL ×2	20×
Blocking Buffer	5 mL	RTU
Primary Antibody	5 mL	RTU
Secondary Antibody	5 mL	RTU
Chromogen Component A	0.2 mL	RTU
Chromogen Component B	4 mL	RTU
Signal Enhancer	5 mL	RTU
Counter Staining Reagent	5 mL	RTU
Mounting Media	5 mL	RTU
Control Slide	1 slide (Optional)	FFPE
Datasheet	1 Copy	
Manual	1 Copy	

## Storage Instructions

All the reagents are stored at 2-8°C. The kit is stable for 6 months from the date of receipt.

## Background

Trafficking kinesin-binding protein 2 (TRAK2) is a member of the TRAK family of kinesin adaptor proteins. In mammals, there are two members of the TRAK family, TRAK1 and TRAK2. TRAK1 and TRAK2 play roles in lysosomal and mitochondrial trafficking in cells. They function as kinesin adaptors linking kinesin heavy chain (KHC) to mitochondria. TRAK2 has been found to act as a trafficking factor for the K<sup>+</sup> channel Kir2.1 and γ-Aminobutyric acid type A (GABAA) receptor.

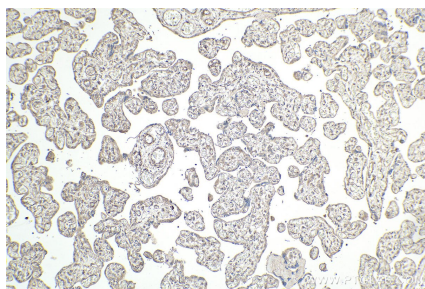
## Synonyms

ALS2CR3, CALS C, GRIF 1, GRIF1, KIAA0549, OIP98, TRAK2

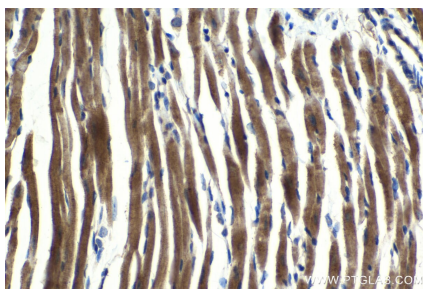
For technical support and original validation data for this product please contact:  
T: 1 (888) 4PTGLAB (1-888-478-4522) (toll free in USA), or 1(312) 455-8498 (outside USA)  
E: [proteintech@ptglab.com](mailto:proteintech@ptglab.com)  
W: [ptglab.com](http://ptglab.com)

This product is exclusively available under Proteintech Group brand and is not available to purchase from any other manufacturer.

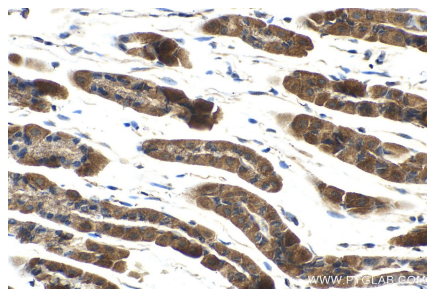
## Selected Validation Data



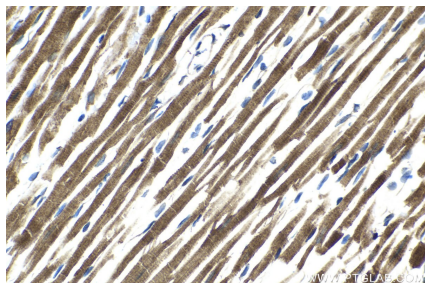
Immunohistochemical analysis of paraffin-embedded human placenta tissue slide using KHC2095 (TRAK2 IHC Kit).



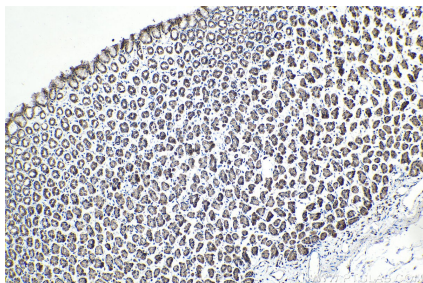
Immunohistochemical analysis of paraffin-embedded mouse heart tissue slide using KHC2095 (TRAK2 IHC Kit).



Immunohistochemical analysis of paraffin-embedded mouse stomach tissue slide using KHC2095 (TRAK2 IHC Kit).



Immunohistochemical analysis of paraffin-embedded rat heart tissue slide using KHC2095 (TRAK2 IHC Kit).



Immunohistochemical analysis of paraffin-embedded rat stomach tissue slide using KHC2095 (TRAK2 IHC Kit).