

# IHC*easy* BUB1B Ready-To-Use IHC Kit

Catalog Number: **KHC2099**

## General Information

Sample type:  
FFPE tissue  
Cited sample type:  
Reactivity:  
Human, Mouse, Rat  
Cited Reactivity:

Assay type:  
Immunohistochemistry  
Primary antibody type:  
Rabbit Polyclonal  
Secondary antibody type:  
Polymer-HRP-Goat anti-Rabbit

## Kit Component

Component	Size	Concentration
Antigen Retrieval Buffer	100 mL	50×
Washing Buffer	100 mL ×2	20×
Blocking Buffer	5 mL	RTU
Primary Antibody	5 mL	RTU
Secondary Antibody	5 mL	RTU
Chromogen Component A	0.2 mL	RTU
Chromogen Component B	4 mL	RTU
Signal Enhancer	5 mL	RTU
Counter Staining Reagent	5 mL	RTU
Mounting Media	5 mL	RTU
Control Slide	1 slide (Optional)	FFPE
Datasheet	1 Copy	
Manual	1 Copy	

## Storage Instructions

All the reagents are stored at 2-8°C. The kit is stable for 6 months from the date of receipt.

## Background

BUB1B(Mitotic checkpoint serine/threonine-protein kinase BUB1 beta), also named as BUBR1, MAD3L and SSK1, belongs to the BUB1 subfamily. Human BUB1B plays a central role in the spindle assembly checkpoint (SAC), the evolutionary conserved and self-regulatory system of higher organisms that monitors and repairs defects in chromosome segregation in mitotic cells. In addition to phosphorylation, BUB1B is also subjected to posttranslational modifications including acetylation. Defects in BUB1B are the cause of premature chromatid separation trait (PCS) and mosaic variegated aneuploidy syndrome type 1 (MVA1).

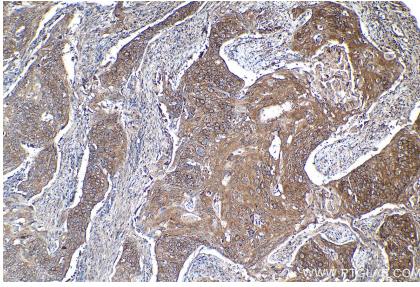
## Synonyms

Bub1A, BUB1B, BUB1beta, BubR1, hBUBR1, MAD3L, Protein SSK1, SSK1

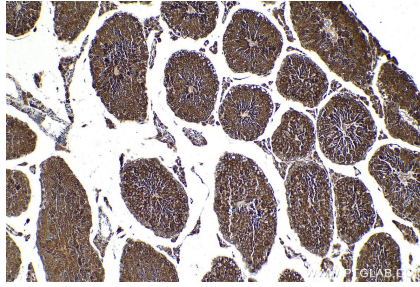
For technical support and original validation data for this product please contact:  
T: 1 (888) 4PTGLAB (1-888-478-4522) (toll free in USA), or 1(312) 455-8498 (outside USA)  
E: [proteintech@ptglab.com](mailto:proteintech@ptglab.com)  
W: [ptglab.com](http://ptglab.com)

This product is exclusively available under Proteintech Group brand and is not available to purchase from any other manufacturer.

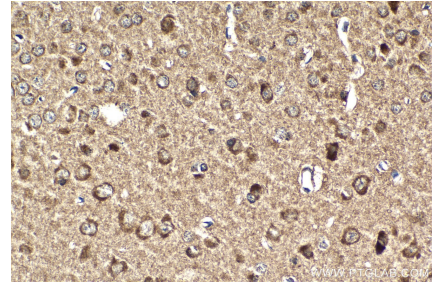
## Selected Validation Data



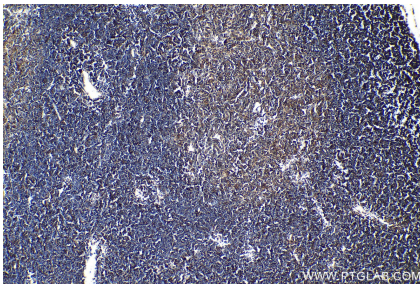
Immunohistochemical analysis of paraffin-embedded human cervical cancer tissue slide using KHC2099 (BUB1B IHC Kit).



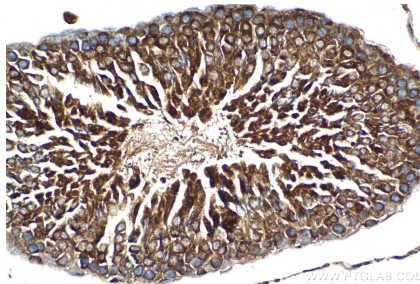
Immunohistochemical analysis of paraffin-embedded mouse testis tissue slide using KHC2099 (BUB1B IHC Kit).



Immunohistochemical analysis of paraffin-embedded mouse brain tissue slide using KHC2099 (BUB1B IHC Kit).



Immunohistochemical analysis of paraffin-embedded rat thymus tissue slide using KHC2099 (BUB1B IHC Kit).



Immunohistochemical analysis of paraffin-embedded rat testis tissue slide using KHC2099 (BUB1B IHC Kit).